

SUPPLEMENT No. 2

WM. HALL & CO.

ESTABLISHED 1843

BRASS FOUNDERS
LOCKSMITHS

and Manufacturers of

Hinge Plates etc.

Fine Builders' Hardware *and*
Electric Railway Specialties
Asylum *and* Patent Prison Locks

OFFICE AND STORE :

7 and 8 Dock Square, Boston, Mass.

FACTORY :

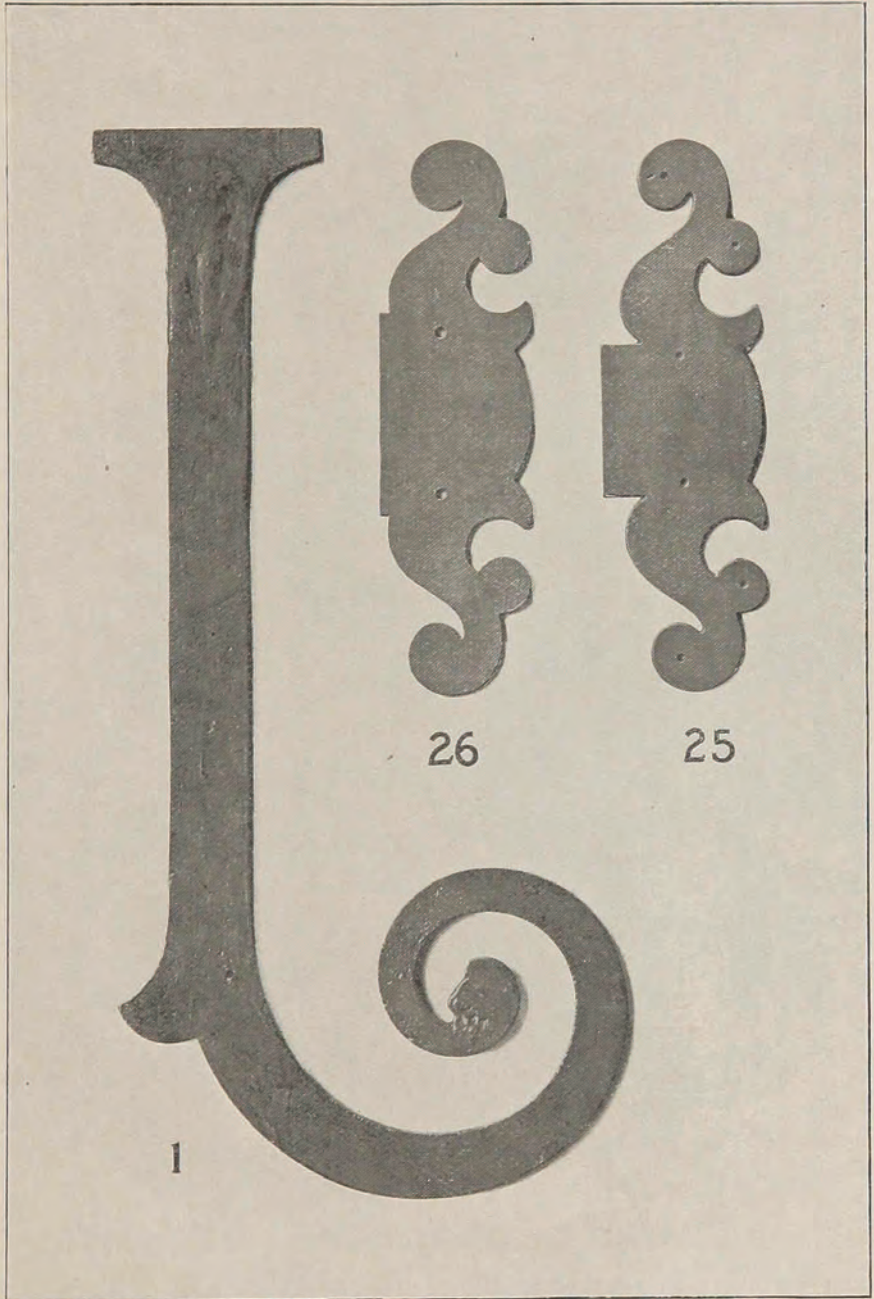
WOLLASTON, MASS.

HINGE PLATES.

No.	PAGE	No.	PAGE
1	13	21	11
2	14	22	7
3	17	24	11
4	12	24½	11
5	16	25	13
6	6	26	13
7	8	27	6
8	7	28	7
9	9	29	10
10	11	30	10
11	8	3030	20
12	17	31	8
13	6	32	9
13½	6	32½	9
14	12	33	7
15	10	34	9
16	12	35	8
17	7	41	21
1713	18	42	20
1730	18	43	20
1731	18	44	21
1732	19	45	21
1736	19	46	21
18	6	50	19
19	6	52	15
20	7		

CAST IRON HINGE PLATES.
DEAD BLACK FINISH.

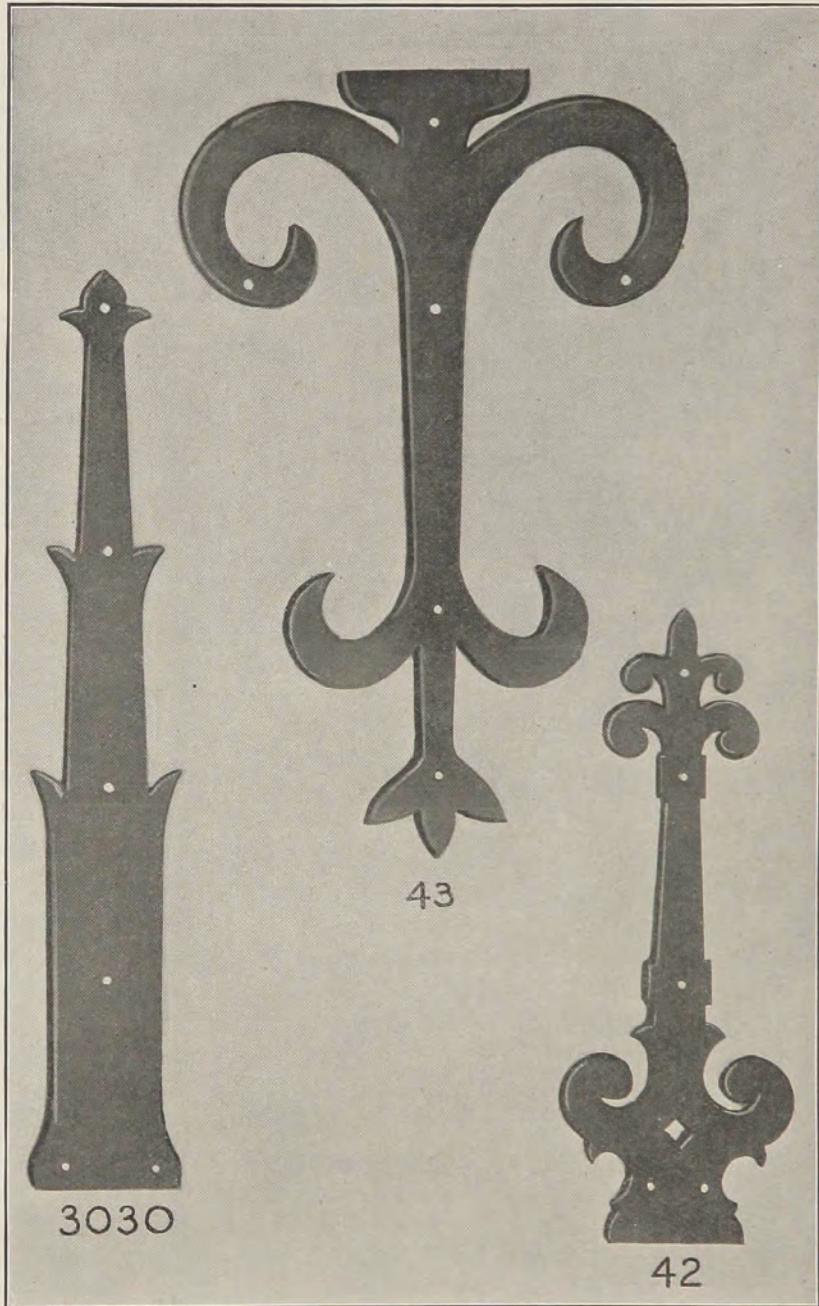
Nails Nos. 100 and 101, shown on page 4, included in price of plates.



No.	1.	27½	inches	long,	13¼	inches	wide,	\$3.50	each.
"	25.	14½	"	"	4¼	"	"	1.50	"
"	26.	10½	"	"	4¼	"	"	1.50	"

CAST IRON HINGE PLATES.
DEAD BLACK FINISH.

Nails Nos. 100 and 101, shown on page 4, included in price of plates.



No. 3030.	30	inches long,	5	inches wide,	.	.	.	\$2.50	each.
" 43.	25 1/2	" "	16 1/2	" "	.	.	.	3.00	"
" 42.	22	" "	7 3/4	" "	.	.	.	2.50	"