

The Doorknob Collector

JULY 1986 - NUMBER 19

Convention

News

Lee and Jim Kaiser will host the sixth annual convention of the A D C A which will be held September 19, 20, and 21, 1986, at The Normandy Inn, 405 South 8th Street in downtown Minneapolis. Free parking is available on site.

Room rates at the Normandy are \$47.00 single and \$49.00 double occupancy. These rates are available before and after the convention dates.

The registration fee for the convention is \$45.00/single, and \$75.00/couple. The registration fee includes two dinners, two pre-dinner get-togethers, a display table and chairs and incidental expenses. Also, we will have the use of an executive suite as a central place to gather.

A registration form is enclosed, please indicate the nights you will be staying, reservations will be made for you and a confirmation will be sent.

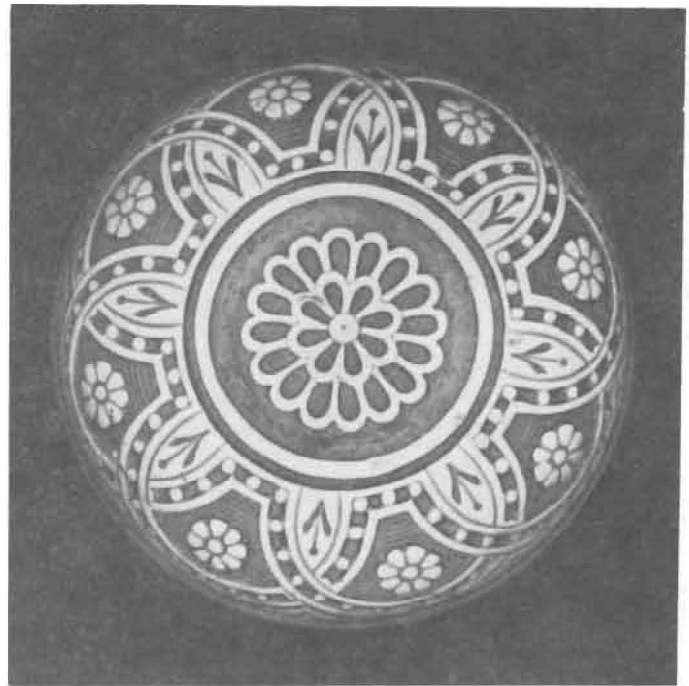
Weather in Minnesota is unpredictable, but late September is usually pleasant (60's and 70's), we will guarantee there will be no snow.

Father Pepper of Waverly, Iowa will again be present for our invocation.

PLEASE REGISTER AS SOON AS POSSIBLE - BUT NO LATER THAN AUGUST 15th.

The Doorknob Collector is published by the Antique Doorknob Collectors of America, Inc.

Editors: Lee & Jim Kaiser, 4125 Colfax Avenue South, Minneapolis, Minnesota 55409



MALLORY, WHEELER, 1882 CATALOG
(Actual size)

SIXTH ANNUAL CONVENTION
ANTIQUe DOORkNOB COLLECTORS OF AMERICA
NORMANDY INN, MINNEAPOLIS, MN.

The convention display competition will be repeated this year. Vince Noe will handle details, ballots will be distributed.

The competition catagories are as follows:

CLASS 1 METALLIC Any metal knob or knobs, brass or iron, cast or wrought, plain or fancy.

CLASS 11 NON METALLIC Any material other than metal.

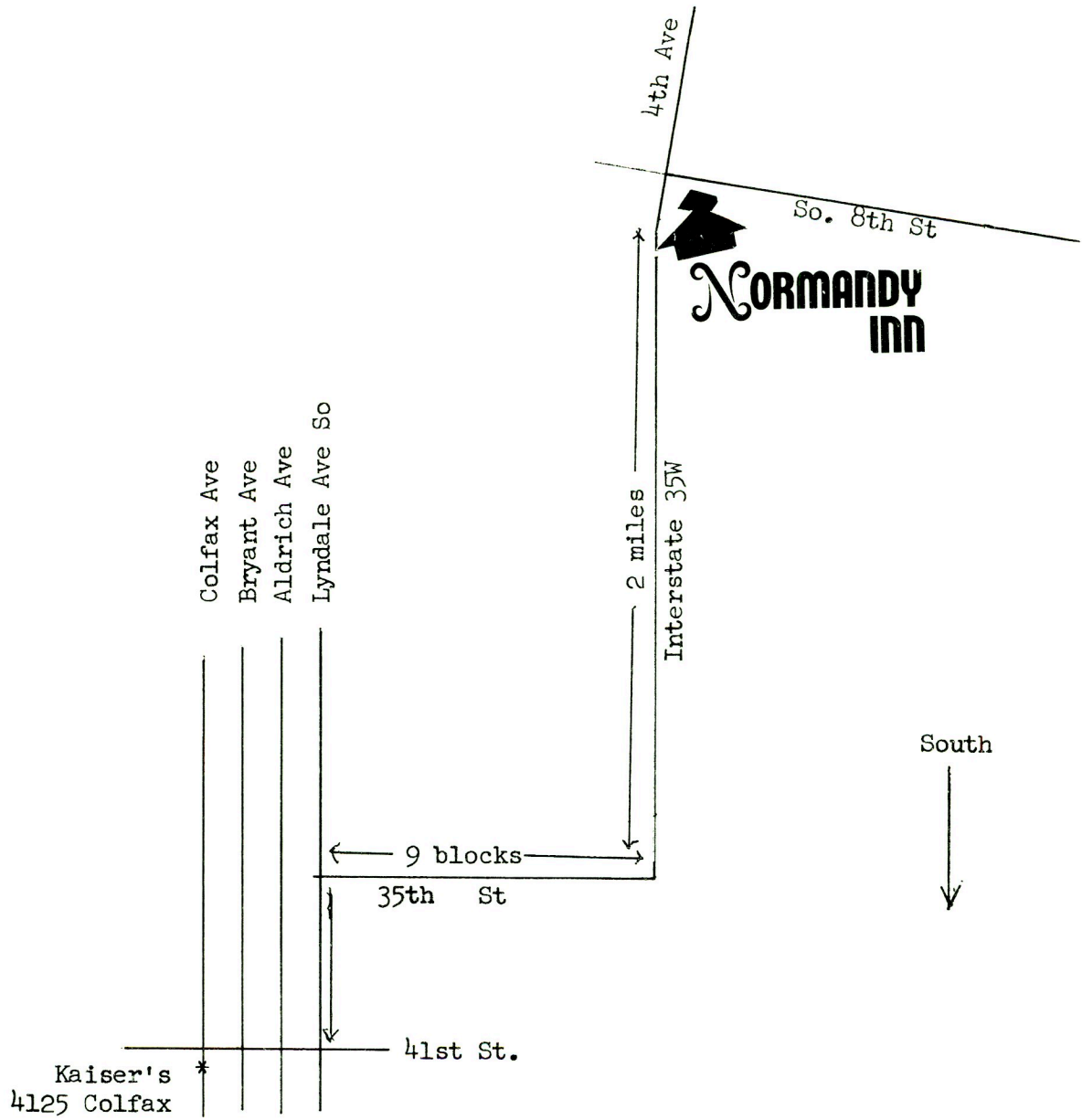
CLASS 111 BEST OF SHOW Best overall display - any material

Prizes will be awarded

SIXTH ANNUAL CONVENTION
 ANTIQUE DOORKNOB COLLECTORS OF AMERICA
 NORMANDY INN, MINNEAPOLIS, MN.

CONVENTION SCHEDULE

	<u>PLACE</u>
THURSDAY EVENING, SEPTEMBER 18th	
Early arrivals gather in Hospitality Room	Room 457
FRIDAY, SEPTEMBER 19th	
9 A.M. - 12 noon Set up displays, get acquainted, register items for auction. No Trading Please. Dealers, please delay selling until 11 a.m.	Continental Room
12:00 - 1:00 p.m. Lunch, on your own	
1:00 - 5:00 p.m. Trading	Continental
5:30 - 6:30 p.m. Happy Hour - Cash Bar	Normandy Room
6:30 - 7:30 p.m. Dinner	Normandy
7:30 - 8:00 p.m. President's Message	Normandy
8:15 - 9:15 p.m. Special Slide Presentation - Bob Phelps	Normandy
SATURDAY, SEPTEMBER 20th	
9:00 - 12 noon Trading - Wheeling - Dealing	Continental
12:00 - 1:00 p.m. Lunch, on your own	
1:00 - 4:00 p.m. Open to the public	Continental
4:00 - 4:15 p.m. Display contest award winners announced	Continental
4:15 - 5:00 p.m. Maudie's Presentation	Continental
5:30 - 6:30 p.m. Happy Hour - Cash Bar	Brittany
6:30 - 7:30 p.m. Dinner	Brittany
7:45 - 8:45 p.m. "Insuring Collections" David Kaiser	Brittany
9:00 - ? Auction Col. LaVerne Andreessen	Continental
SUNDAY, SEPTEMBER 21st	
9:00 - 12 noon Reports and business meeting	Continental
12:00 - 1:30 p.m. Last minute trading - pack up	Continental
2:00 - ? Open House and lunch - Kaiser's - 4125 Colfax Ave. South	



If you need transportation - see Lee or Jim

Mothers Maudie's Message to Minneapolis,
1986 Conventioners

The archives of successful organizations, whether started for pleasure or profit, reveal names of founding fathers often characterized as "movers." Certainly, our founding fathers were pioneering movers, as we were the first in this specialized field. The ANTIQUE DOORKNOB COLLECTORS OF AMERICA Club, then, was formed without a role model to follow or membership lists from which to draw, yet grew and prospered under wise leadership.

Our clubs' leaders were visionary. Realizing that self-serving groups sometimes die with the old-guard, their vision for our clubs' future was that it might justify and dignify its existence by fostering programs and procedures designed to inspire current membership and attract new. Further, to be of service where practical and possible. And, ultimately, to establish, at a favorable location, a museum that might ultimately house major displays of artifacts and research materials.

Organizations, to remain viable, require responsive members, sensitive to projected roles and goals. Our club members qualify. Let us continue to voice our wants and needs, thus assuring healthy intercourse, stimulating and productive.

Let us not grow fat and satisfied, resting on our laurels, basking in a fair amount of media recognition and growing inward, only.

I challenge us ALL to become doorknob MAVENS (Hebrew for understanding - a judge of good quality, an expert). We are going to need all the expertise we can muster, when the anticipated day comes when our museum is a reality, and we take our turns volunteering! Can't wait!

I got so excited that I couldn't wait and came a day early!

Maudie E.

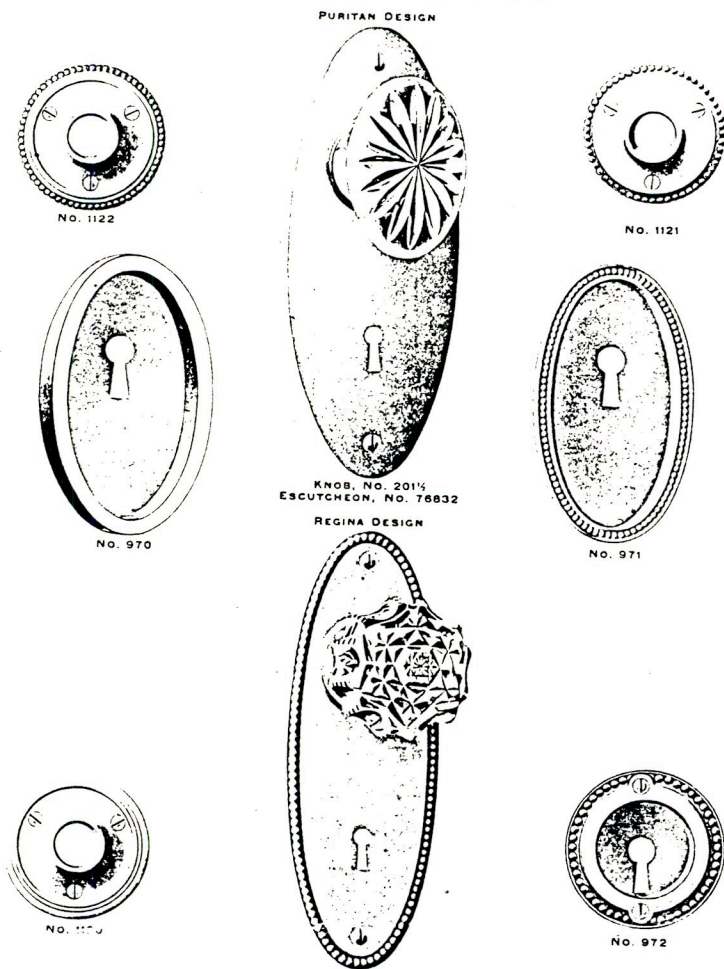
Section 9.

GLASS KNOB SETS

WITH THE CURRENT TREND TO COLLECT SETS --A KNOB AND PLATE (OR ROSE), THE QUESTION ARISES, "WHAT ARE THE OPTIONS WITH GLASS KNOBS?"

The answer depends on the year or era, whether cast or wrought metal or glass.

GLASS DOOR KNOBS
AND ROSES AND ESCUTCHEONS



1890's
early 1900's

Glass knobs were used with Colonial plates & roses.

Cut Glass Trim.

GLASS Knobs have been described on pages 944 to 951, and are available for use with metal Roses, Key Plates and Escutcheons of many styles.

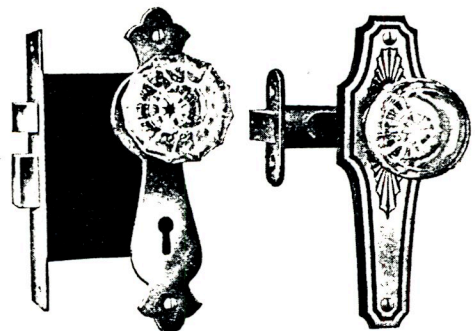


Fig. 1.

In like manner glass is available as the material for Key Plates and Escutcheons, combined with either glass or metal knobs, as shown by the accompanying illustration (Fig. 1) and Fig. 1 on page 522.

Glass is particularly suitable for Push Plates and Finger Plates. Combined with proper metal work it is very effective.

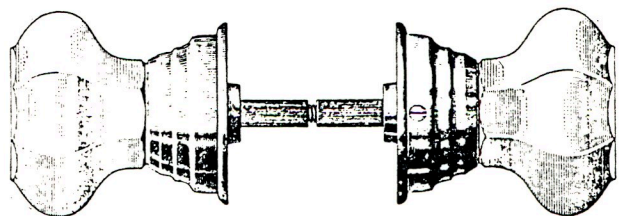
It has long been used for these purposes in France, and merits more consideration here than it has heretofore received, especially in residence work, where it is particularly appropriate. Necessarily glass hardware, except of very simple kinds, must be made to order, and the material lends itself readily to special forms designed to harmonize with the surrounding decorations.



1920's---1940's

Octagon, polygon and round knobs were used with all wrought steel designed plates, interchangeably with metal knobs.

GLASS DOOR KNOBS



Shell shank, having it's own flat rose; requiring no other.

1850's to early 1900's