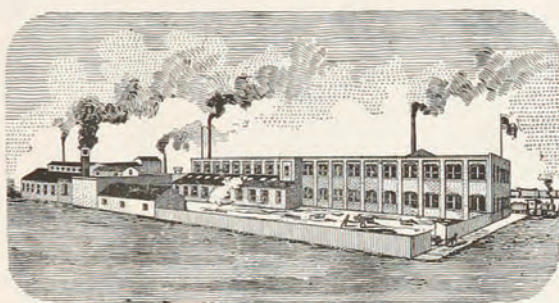


Supplement No. 1

— TO —

Catalogue No. 6



UNITED STATES STEEL
LOCK COMPANY

CLINTON, IOWA

U. S. A.

REVISED LIST OF FINISHES

GRADE NO. I

FINISH NO.	DESCRIPTION
J	Ivory Japan
1	Bright Bronze, Natural Color.
2	Bright Brass, Natural Color.
3	Bright Surface, Black Back _g round.

GRADE NO. II

4	Antique Brass, Relieved.
5	Antique Copper, Dark, Relieved.
6	Antique Copper, Light, Relieved.
12	Dead Brass or Ship Finish.
12½	Dead Brass, Oxidized.
20	Satin Dull Brass.
24	Dull Bronze.
25	Antique Copper, High Parts Bright.
27	Antique Copper, Bright Center.
35	Chocolate Bronze.

GRADE NO. III

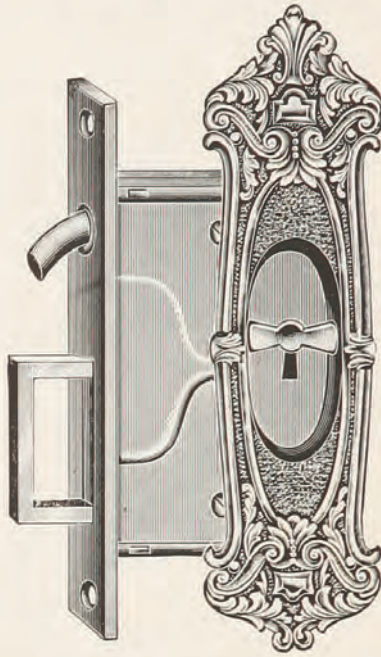
8	Nickel Plated.
8½	Nickel Plated, Oxidized.
11½	Sand Blast, Imitation Bower Barff.
13½	Sand Blast, Antique Brass, Mottled.
14½	Sand Blast, Antique Brass, High Parts Bright.
14	Sand Blast, Antique Brass, No Relief.
15	Sand Blast, Antique Copper, Relieved.
15½	Sand Blast, Antique Copper, Mottled.
16	Sand Blast, Antique Copper, No Relief.
16½	Sand Blast, Antique Copper, High Parts Bright
18	Sand Blast, Nickel Plated.
18½	Sand Blast, Nickel Plated, Oxidized.
21	Crystalized Bronze.
22	Crystalized Brass.

GRADE NO. IV

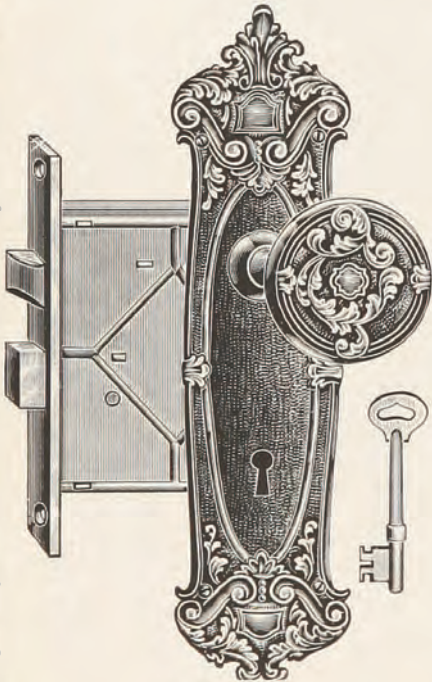
19	Genuine Bower Barff.
----	----------------------

VERSAILLES DESIGN

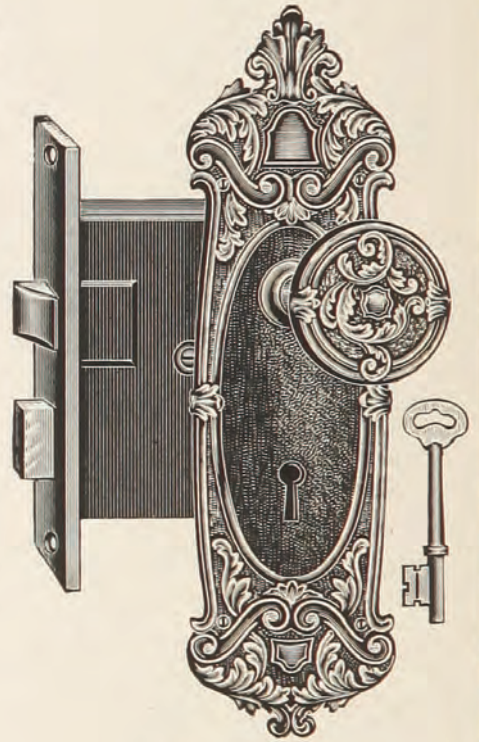
CAST BRONZE



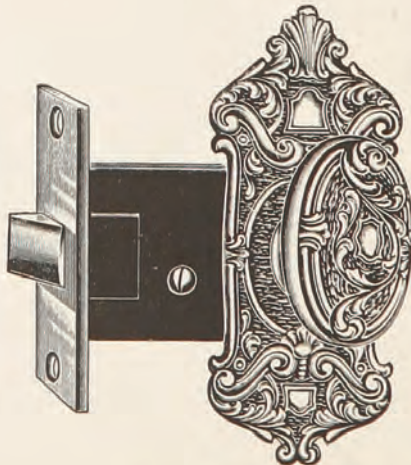
No. S10702



No. 101054



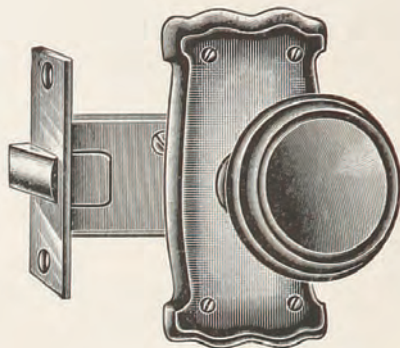
No. 104026



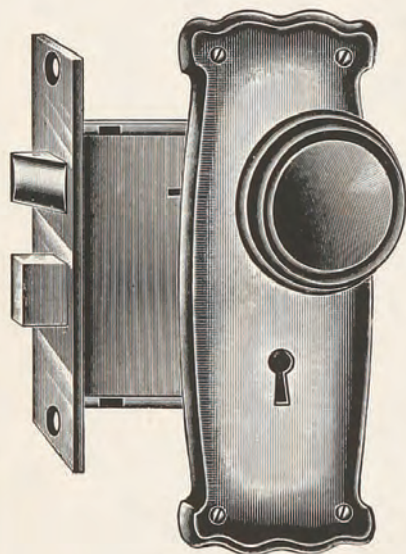
No. J103014

LAFAYETTE DESIGN

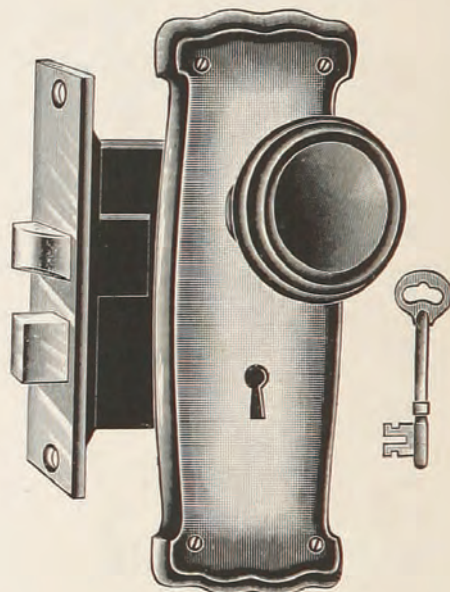
WROUGHT STEEL



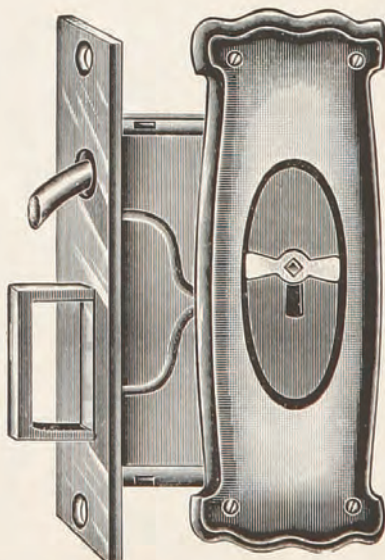
No. D123095



No. D121095



No. D124065



No. S12799