

The Doorknob Collector

Number 95

May - June 1999

A Publication of The Antique Doorknob Collectors of America


School Time In Portland

By Maude Eastwood

In 1904 Yale & Towne published a treatise on the Schools of Architecture. It was authored by architect W. W. Kent for the benefit of those who wished to select hardware true to the period of the building on which it was to be used. Thus, this classification system came into being for use by builders.

Kent defined thirty-seven schools of design based on historical use. Twenty-five of these schools were illustrated in the treatise using a total of 295 Yale & Towne hardware patterns which gave builders a good understanding of the various schools.

The following limited definitions of a number of the schools will benefit collectors classifying and cataloging ornamental metal hardware in their collections. The seven listed below were selected in consideration of their long use and popularity.

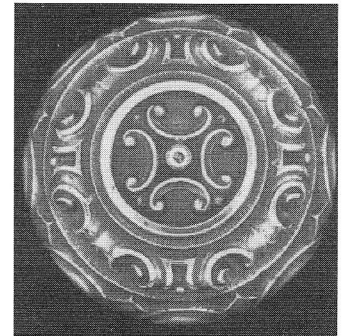
Elizabethan - based on Flemish and classic art. Scrolls with curling edges. Strapwork with "nail-head" protuberances. Cartouche (scroll-like ornament or tablet) with drapery festoons. The Tudor flat pointed arch, the guilloche (a decorative design in which two or more curved lines or bands are interwoven, forming a series of spaces between them) and  frequent inter-lace most emphatically mark this work.

French Renaissance - unconventional twisting of stems. Shells and scrolls. Interlaced ribbon ornaments with lozenge (diamond shapes) and cartouche,

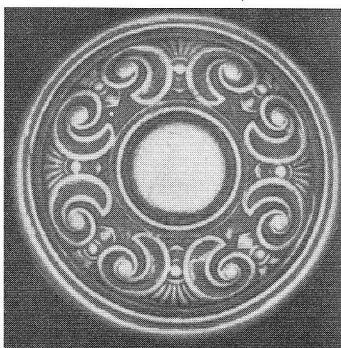
delicate arabesques and pierced shields. Acanthus (thistle-like plants). See illustration on page 2.

Gothic - free of the classic, having either geometrical designs or flowers or leaves. Quaint figures. Use of oak, ivy, seaweed, kelp. Trefoils, quatrefoils, arches. See two illustrations on page 2.

Greek - reserved. Dignity and beauty of form and outline. Use of bay leaf, palm, ivy, laurel, honeysuckle. Meander (ornamental pattern of winding or crisscrossing lines; Greek key), egg and dart and pearl and



Elizabethan: Avon by Reading 1905. Note curling scrolls



Elizabethan: Hertford by Y&T 1905. Note "nail-head" center

Continued on page 2

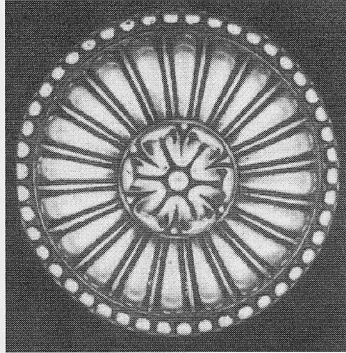
Newsletter Deadline - June 15

Inside			
Bits and Pieces	6	Doorknob Exchange	6
Contributors	2	Frame-ology	5
Convention Program	4	From the Archives	3
Convention Schedule	4	Help Has Arrived	3
		New Members	3
		Portland Welcomes ADCA	4
		Putting Together a Display	5

School Time In Portland

Greek (Cont'd)

bead borders, anthemion (a flat decoration of floral or leaf forms), and lotus.



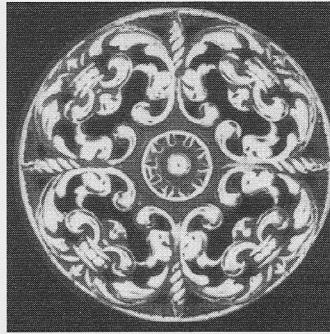
*Greek: Bullis by Sargent c.1905
Bead border with lotus center*

Italian Renaissance - Cherubs, beasts, birds, fish. Acanthus, lilies, palm. Repeated classic forms. Shields, coats of arms, garlands of fruit and flowers tied with waving ribbons. Scrolls, egg and dart, interlacing lines combined with simple tracery. Frets (small, straight bars intersecting or joining one another at right angles to form a regular design).



*Italian Renaissance:
Milan by Y&T 1894. Note
waving ribbons in border
and shield in center.*

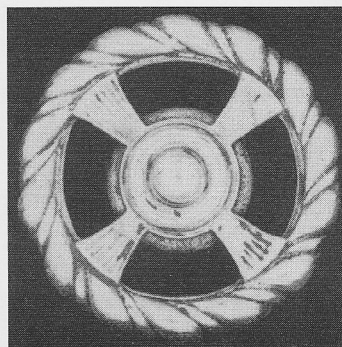
Louis XVI - Straight lines. Borders of reeds and ribbons. Palms and other vegetable forms, flower and fruit festoons. Cherubs, pearls, garlands. Griffins, foliated arabesques (a complex and elaborate design of intertwined flowers, foliage, or geometrical patterns), guilloche.



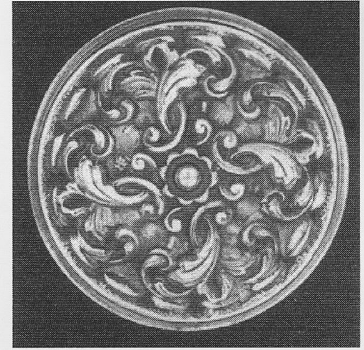
*Louis XVI: La Grande by
Reading c. 1905.
Foliated arabesque.*



*Louis XVI: Courtray by
Reading c. 1900. Note
ribbon and palms in border.*

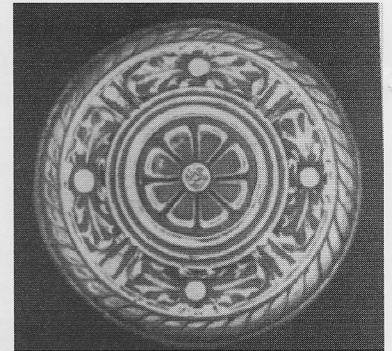


*Gothic: Kelp by Y&T 1894
Geometrical design*

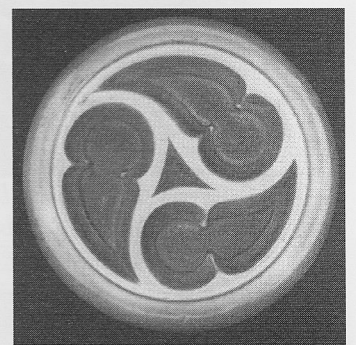


*French Renaissance: Mortain
by Reading c. 1900.
Note twisting stems*

Roman - festoons made up of fruits, flowers, foliage, cereals. Animal forms and mystic symbols. Eagles, griffins, fillets (net or lace) of all sorts. Border and lattice work. Wealth of detail, heroic, grand.



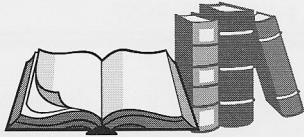
*Roman: Hadrian by R&E
c. 1905
Note wealth of detail*



*Gothic:
c. 1905. Trefoil design*

From the Archives

By Steve and Barbara Menchhofer



Door Hardware Schools of Design - Convention '99

The next ADCA convention will be upon us before we know it. So now is the time to start your preparations. Get those catalogs out that you've ordered from the Archives and study, study, study. A broad range of information can be gleaned from your hardware catalogs. Maude Eastwood's article in the last newsletter provided a jump-start to get you going on your research. She mentioned Len Blumin's book using his way of classifying doorknobs plus she gave a list of several catalogs with information in them about schools of design.

Let us mention one or two more. First, there's The Corbin - Schools of Design 1902-1903. Articles were written about the different schools of design for the purpose of helping the hardware salesman relate to the customer suggesting the correct hardware to be used on a given style of building. The articles begin with Greek Ornamental Art and end with Modern Art (Art Nouveau) with lots of others in between. There are pictures of the type of ornamentation mentioned plus pictures of doorknobs that fall under that category in most of the articles. If you have this catalog, use it. It's great.

The second one we will mention is Russwin Hardware Schools of Design - no date. Here is a catalog that not only explains the schools of designs but it shows pictures of hardware related to the

ornamentation described. It also includes photos of buildings where the appropriate architectural design of hardware was applied. This is another good choice of a catalog to have in your library.

Here are some others that may be helpful:

Yale & Towne Art Metal Work -
Catalog #16 - July 1897
Sargent & Co.'s Hardware - 1901
Lockwood Manufacturing Com-
pany - 1914
Russel & Erwin - 1909
Yale and Towne - 1910
Sager - 1937
Barrows - 1939

Even if you are not going to the convention, these catalogs will help you learn more about your hardware.

Look for the ARCHIVES ORDER FORM in the July - August issue of The Doorknob Collector.

HELP HAS ARRIVED

Available below is some information from Maude Eastwood that may help in identifying the schools of design.

Currently Available Addendum to *Antique Builders Hardware, Knobs & Accessories*

Identifies by School of Design.
250 additional illustrations.
Includes knobs by P&F Corbin,
Reading Hardware, Sargent &
Co., and P.E. Guerin.

Send \$1.00 to
PO Box 2609
Woodinville, WA
98072-2609

New Members

We extend a warm welcome to our newest members of the ADCA:

James Nuss	Seattle, WA
Jim Schmitt	Minneapolis, MN
Daniel Zanes	Brooklyn, NY
Ann Fiore	Newport, RI
Karen Burger	Washington, VA
Craig Jackson	Lafayette Hill, PA
Wade Enright	Minneapolis, MN
Franklin Hall	Wells, ME
Burt Kaufman	Florissant, MO

Contributors

We would like to thank the following people for their contributions of ideas, articles and information presented in this issue.

Cathy Galbraith
Maude Eastwood
Barb and Steve Menchhofer
Win Applegate
Loretta Nemec
Dick Hubbard

The Doorknob Collector®



Published six times a year by **Antique Doorknob Collectors of America, Inc.**
P.O. Box 31, Chatham, NJ
07928-0031

Richard and Faye Kennedy, Editors
Phone (973) 635-6338
FAX: (973) 635-6993

Annual Membership in US \$25.00
Foreign rates on request.

Single issue of *The Doorknob Collector* \$5.00
Founded Sept 1981, the **Antique Doorknob Collectors of America** is a non-profit organization devoted to the study and preservation of ornamental hardware.

The opinions expressed in this publication are those of the individual writer and do not necessarily reflect those of the Board of Directors of ADCA or the editors.

Any reproduction of material contained in *The Doorknob Collector* without permission of the **Antique Doorknob Collectors of America** is prohibited. All material submitted for publication becomes the property of the **Antique Doorknob Collectors of America**, unless otherwise agreed upon in advance in writing. Material quoted in *The Doorknob Collector* from other sources is subject to the requirements of the originator.

**PORTLAND WELCOMES
ADCA WITH
"DOOR HARDWARE SCHOOLS OF
DESIGN CONVENTION '99"**

Portland, Oregon will offer a rousing welcome to the ADCA this summer as our Annual Convention convenes on Wednesday, August 4th and runs through Saturday, August 7th, 1999. A great attendance is anticipated of both long-standing and new members. August is traditionally warm and dry in the Northwest so comfortable weather is anticipated for our annual extravaganza!

**1999 ADCA CONVENTION
SCHEDULE**

Tuesday, August 3rd: Pick up your Welcome Packets at the Mallory Hotel. An "Early Birds" reception will be held (from 5:30 - 7 PM) at **Hippo Hardware** (packed with salvaged treasures of all kinds!) which is a 10-minute jaunt across the river to the Portland's eastside.

Wednesday, August 4th is Tour Day. A deluxe motorcoach bus tour will begin at 9:30 AM with a private tour of the French Renaissance-style **Pittock Mansion** - and its equally majestic setting overlooking the city. Lunch is at Washington Park, with a stroll through the famous rose gardens and Vietnam War Memorial. Then it's on to **Officers Row** (Civil War-era Army Officers homes, including Ulysses S. Grant and General O. O. Howard) and **Fort Vancouver**, a national historic site, and a step back in time to 1845 and the days of the Hudson Bay Company. A special presentation on metals conservation will be featured for the ADCA tour. A reception at **Rejuvenation** (a treasure trove of all things historic for vintage buildings) will conclude the day.

Our host organization - the **Bosco-Milligan Foundation** - will have a major hardware exhibit at Rejuvenation during the month of August.

Thursday, August 5th: Set up at the **Scottish Rite Temple**. Buy, sell, and trade your hardware. Balloting for display awards will take place. The ADCA will welcome our old friend **Art Pahlke** who will give a presentation on schools of hardware design, as well as security measures for collections. Hardware conservation - the pros and cons of refinishing and best methods - will be the day's second education session, by Portlander **George King**.

Friday, August 6th: Buy, sell, trade some more! The day will feature a panel discussion on the **ADCA: its Past, Present, and Future**. We will welcome the public (1:30 - 3:30 PM) in our Victorian attire during the afternoon. Displays are to be taken down at 4:00 PM. The evening cocktail reception and **Awards Banquet** will be followed by the **ADCA Business Meeting**.

Saturday, August 7th Buffet breakfast (8:00 - 9:30 am) at the Mallory Hotel will be followed by the eagerly anticipated **AUCTION** (beginning at 10:00 am). Later in the day, **Hippo Hardware** will offer snacks to ADCA members at an 'Open House'.

The convention hotel is the historic **MALLORY HOTEL** at the "western edge" of downtown Portland (729 SW 15th Avenue and Yamhill). It's a wonderful Old World hotel with all the up-to-date amenities, at reasonable rates. Free parking in the secure adjacent garage is provided for hotel guests.

**Make your hotel reservations
NOW by calling the Mallory
Hotel at 1-800-228-8657.**

The Convention's displays, educational sessions, and Banquet will be held at the historic **Scottish Rite Center** (Masonic Lodge Building), right next door to the Hotel (709 SW 15th Ave). Security is top-notch in this beautiful historic building, which dates to 1902. Plenty of attractions for every interest are in walking distance or a short ride away. The local host committee has been hard at work to make sure all ADCA members have an outstanding stay in Portland, and a grand convention!

**July 10th is Convention
Program Deadline**

Each year we publish a convention souvenir program with information about the club, messages and greetings from members, and pages with your advertisements. It is time to think about your entry. See the page in the convention packet with all of the details. We want you to take part even if you will not be attending. Have your copy to Bob Rodder no later than **July 10**.

New Member Policy

Membership in ADCA follows the current calendar year. Anyone joining between January and September is enrolled for the current year and receives all the issues of **The Doorknob Collector** for the current year.

New members after September 30th will be enrolled as members for the following year. They will begin receiving **The Doorknob Collector** with the Jan-Feb issue of the next year.

Putting Together a School Design Display

By Maude Eastwood

ADCA members attending the August convention will find this year's options for assembling hardware for display, trade, and sale the same as previous year's options. That is, in addition to hardware reflecting the convention theme, **DOOR HARDWARE SCHOOLS OF DESIGN**, displays of glass, china, wood, plastic and metal of all types are invited and welcome, size of the display is a non-factor.

Entering display competition is also optional. This year's contestants will note four categories listed.

1. Greatest number of schools represented (ties to be settled by overall appearance)
2. Best School(s) of Design Display
3. Best Display by a Novice Collector (1-3 year collector, any medium or type)
4. Most Creative Display, any type

Hardware qualifying for theme displays are cast metal knobs (and/or plates) carried in manufacturer's catalogs from the late 1890s to the 1930s era, illustrated and identified by design name and school.

Collectors not having access to copies of these catalogs to consult are not to worry, as Eastwood's *Antique Builders Hardware, Knobs & Accessories* and Blumin's *Victorian Decorative Art* illustrate these same knobs by the hundreds, complete with identification appearing either at the side or bottom of the illustrations. To make this information useful, collectors need only to match hardware from their collection to illustration in these books and catalogs to establish design names

and schools with which to label their specimen.

Some confusion in labeling is to be expected, however, considering several of the design motifs are common to more than one school. Therefore, visual aids and consulting opportunities will be offered at the convention for collectors needing assistance. The contest categories are largely self-explanatory.

Category 1 would be composed of examples of ornamental doorknobs and/or plates representing as many of the schools of design as could be located (Colonial, Greek, Art Nouveau, Gothic, etc.).

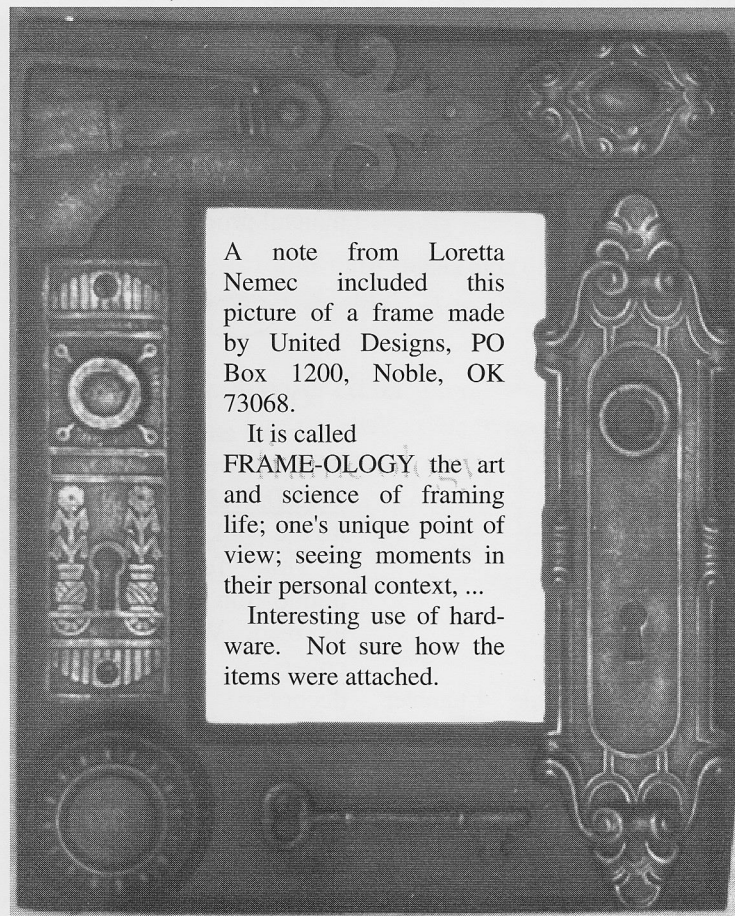
Category 2 has no restriction except that each piece would represent a school of design. Some simple examples would be (a) several schools from a single manufacturer, (b) one

school from several companies, or (c) some other combination to your liking. Label your display to show intent.

Category 3 encourages new collectors to take part in the display contest using any knobs from their collection.

Category 4 will bring out the creativity of our members. This always proves to be interesting.

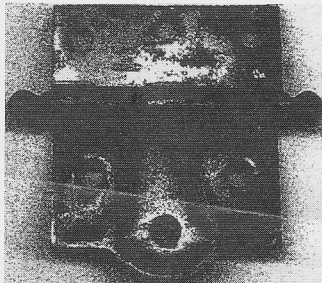
Don't Miss the "Design School" Bus



The Doorknob Exchange

Members are reminded that your dues entitle you to advertise items for sale, trade or wanted at no charge. ADCA is not responsible for any transaction or the condition of the items advertised.

Wanted: Four pairs of 1/2 surface hinge. Size 3 1/2 x 3 1/2 in.



Vicky Berol #450
(415) 771-9899

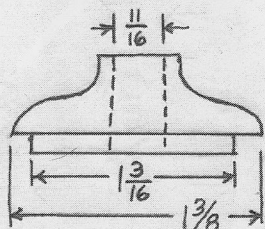
Wanted: a St. LM knob. It might be from either an old hotel in St. Louis or St. Luke's Methodist.

Bonnie Otte #484
(630) 897-2959

Wanted: New collector is seeking single cast decorative bronze or brass round doorknobs. Surely you have some duplicates. Please send picture and price to:

Lynne Stephens #547
3034 S.W. Quail Creek Drive
Topeka, KS 66614

Wanted: Brass spindle to hold knob in escutcheon plate.



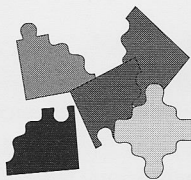
Rich Kennedy #238
Knobnews@aol.com
(973) 635-6338

For Sale: Quality Yale 4-tumbler Asylum Mortise Locks \$15.00 each postpaid.

David R. Sherk #538
PO Box 214
Angelica, NY 14709-0214
(716) 466-3099

Bits and Pieces

By Win Applegate



How about a "Featured Knob of the Day"?

These thoughts come to us from Richard Hubbard.

In recent weeks a knob, apparently not seen before, has emerged. After the first two were auctioned off on the Internet and others were offered a few weeks later, Dick asked the question: "Why haven't we seen them before"?

Researching through a Coca-Cola authority whom he knows, the answer came back, "**They are Fakes!**" Also making the rounds are etched glass knobs with a similar inscription.

The white porcelains appear to be old, but with an absolutely perfect "Coca Cola" trademark with no chips in the glaze or clay. How is it done? It is still a guess that it is done by either a laser or very fine diamond machine tool. The quality of the results are near-perfect so it certainly is not a manual process, so be forewarned!



On to another item: Another book by an ADCA member! Web Wilson's new book *ANTIQU* *HARDWARE Price Guide* has just hit the book shelves.

This full size soft cover publication is informative and easy to read. Web has attempted to cover a broad spectrum of decorative hardware with many good photos of hardware other than just knobs. In his profession, Web has touched a wide range of hardware and here he has attempted to cover many aspects that may prove useful to us whether we are

wearing our collectors' or our researchers' hats.

The book is available either at bookstores offering collector style publications or through Web's website webwilson.com.

You must be aware that while I feel this book is worthy of becoming an addition to your library, it is not the policy of your organization to recommend resources strictly for pricing purposes.



Keep in Touch



Mail:
ADCA Box 31
Chatham, NJ
07928-0031



FAX:
(973) 635-6993



Phone:
(973) 635-6338



E-Mail:
KnobNews@aol.com



Web Site:
<http://members.aol.com/knobnews>