



The Door Knob Collector

Number 61

September - October 1993

Last call to convention



The 1993 annual ADCA convention is almost here. Just days away, it seems. Your convention 'package' was enclosed with the July-August newsletter. Everyone should have received it and hopefully, it answered any questions you may have had.

Although the convention is scheduled to begin the evening of October 8th, both Thursday and Friday, October 7th and 8th will have special pre-convention activities.

Tours in Washington, D.C. are planned for both days and members Steve and Deborah Champlin will host a pre-convention reception at their home on Thursday.

The special convention room rate is in effect from Monday, October 4th, to Friday, October 15th. Be sure you make your reservation at the Holiday Inn in Gaithersburg, Maryland, before September 24th.

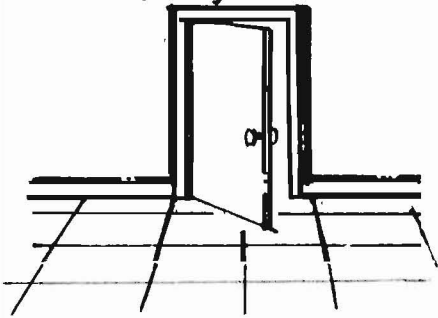
Last year's Victorian theme, while we were open to the public, was a big success and we will continue it this year. Everyone is encouraged to bring Victorian style attire for Sunday afternoon.

Whether you bring a large amount of knobs, a few or none, whether you wear Victorian style attire or not, the important thing is to come and be counted as one interested in door hardware. •

1993 ADCA Convention, Gaithersburg, MD, October 8-11

THE OPEN DOOR

by ray nemec



The 21st annual Lock collectors Show will be held at the Terryville High School on October 16, 1993. This is a week later than originally scheduled. A conflict existed with the ADCA convention which is scheduled for October 8-11.

Tom Hennessy was able to move the Lock Collectors Show when it was determined the ADCA dates could not be moved. A number of ADCA members are also members of the Lock Museum and like to attend both functions. Thus, we are grateful that Mr. Hennessy was able to move his show.

This is probably a good time to mention that since the Lock Collectors Show has been held in October for many years, ADCA should try to avoid future conflicts with the Lock Museum's gatherings.

Last year was ideal. ADCA had their convention in August and the Lock Museum in October. This gave avid hardware collectors a chance

to attend both functions which were spread out over three months. By doing this, those who desire to attend more than one convention or show a year can do so.

For the future, I would like to suggest we do two things, check with Tom Hennessy for his schedule of shows and conventions and, if at all possible, avoid October for conventions. After all, The Lock Museum has had a "lock" on October for many years. •

ADCA Books

The following publications are available from:

ADCA
P.O. Box 126
Eola, IL 60519-0126

<u>Book</u>	<u>Prices</u>
The Antique Doorknob by Maude Eastwood	\$12.00
Antique Builders Hardware by Maude Eastwood	\$19.50
Antique Builders Hardware (three ring binder w/hard cover) by Maude Eastwood	\$21.50
Supplement No. 1 Antique Builders Hardware by Maude Eastwood	\$ 6.00
Victorian Decorative Art by Len Blumin	\$12.00
(Above prices include shipping and handling costs.)	



Get well wishes

Get well wishes go to Richard Balasa, who recently underwent surgery for a blockage. Richard, who co-hosted the 1992 ADCA convention with his wife, Lil, is home recovering and is looking forward to attending the convention at Gaithersburg.



Antique Doorknob Collectors of America Board of Directors

President.....Win Applegate #110
Vice President.....Dale Sponaugle #85
Sec/Treasurer.....Loretta Nemec #8
Board Members.....
Len Blumin #3
Dean Campbell #11
Maud Eastwood #12
Arnie Fredrick #1
Carlos Ruiz #52

The Doorknob Collector

Published six times a year by Antique Doorknob Collectors of America, Inc.
P. O. Box 126, Eola, IL 60519-0126
Raymond and Loretta Nemec, Editors.
Phone: 1-708-357-2381
FAX: 1-708-357-2391
Annual Membership in USA: \$20.00
Foreign rates on request.
Reproduction in whole or part without written permission is prohibited.
Printed by Sun Printing, Naperville, IL

Protect your collection

(Co-editor Albert Speenburgh of Beam Around the World, the newsletter for the International Association of Jim Beam Bottle and Specialties clubs wrote the following steps for protecting collections. It appeared in their January 1993 issue.)

1. Keep several records of your collection. Keep one at home, one in a safety deposit box and one to your insurance agent. Update often.
2. Photograph, either still or video, making at least two copies. Keep one for your records and one in a safety deposit box. Video has the advantage of adding to or copying. When photographing your collection always use an item or a background where you can show positive ownership.
3. Mark the rough bottom with an invisible marker, only visible under black light. Record your mark and keep it identical every time you use it.
4. Alarm systems and/or alarm decals posted about on doors and windows are very helpful.
5. Help organize neighborhood watch programs.
6. If using showcases or shelves, use a numbering system and keep a record of what was on each shelf or in each case.
7. If showing your collection to anyone who does not know your hobby, do not point out the most valuable articles but show something that is inexpensive and easy to replace. When showing your collection, refrain from telling the cost and worth of anything. Know the people who view your collection. Also enjoy your collection with friends.
8. Protect your home when you are gone.
 - A. Call your local law enforcement agency advising them you will be gone.
 - B. Stop or have a friend pick up mail and papers.
 - C. Have a friend or neighbor park their car in your driveway.
 - D. Do not leave lights on that are not normally left on.
 - E. If you use timers, use more than one to work with movement around the house.
 - F. Do not leave a light on in a room with curtains open and no activity.

G. Use radios and television on timers to go on and off with lights.

H. If gone during snowstorms, have drive and walks cleared.

I. Have neighbor drive in and out of garage several times leaving tracks.

J. Leave a key with a friend or relative if you are gone for a long period and instruct them how and when to change your timers.

K. Bad habits:

1. Leave outside lights on all day and night (not normal).

2. Leave a light over sink on 24 hours a day (put on timer).

3. Open curtain and light a light near a window which is on 24 hours a day and no other lights in the house.

L. The best tip is make your home look like it is lived in.

M. Check all entrances to your home and make sure there are no shrubs or obstruction that can hide a burglar as he makes his entrance.

N. When disposing of boxes in the garage, tear them up and place in plain box or bag so not to alert passersby of your purchases.

O. Contact local authorities for other ideas and programs.

As your co-editor, and a professional police officer and collector, I say enjoy your collection but be careful. ●

(Reprinted by permission of Albert Speenburgh and Jim Beam Bottle Club)



Hardware Symposium

The Lock Museum of America will hold a two day "Hardware Symposium" for those interested in doing historical research in the museum. It will be held on Thursday and Friday, October 14th and 15th from 9 AM to 5 PM. according to the Lock Museum's Newsletter. Those attending should bring some of their research material to the symposium for presentation.

The Museum's 21st Annual Lock Collectors Show will be hold at the Terryville High School on Saturday, October 16th. This will be followed by a dinner at the museum on Saturday evening.

Contact Tom Hennessy, curator, for further information. Mr. Hennessy can be contacted by writing to him at the Lock Museum of America, P.O. Box 104, Terryville, CT 06786-0104 or by telephoning or faxing him at (203) 589-6359. ●

Historical library needs hardware

Lillian Balasa is working on a project for the Sears Historical Library. She is looking for authentic Sears hardware and any donations from fellow ADCA members will be appreciated. All donations will be acknowledged by Sears.

You can bring the hardware to the convention or mail the items to Lil. Her mailing address, either for the donations or more information,

Lillian Balasa,
630 B Waverly Drive,
Elgin, IL 60120
Phone: (708) 695-4254

Ornamental design in antique doorknobs

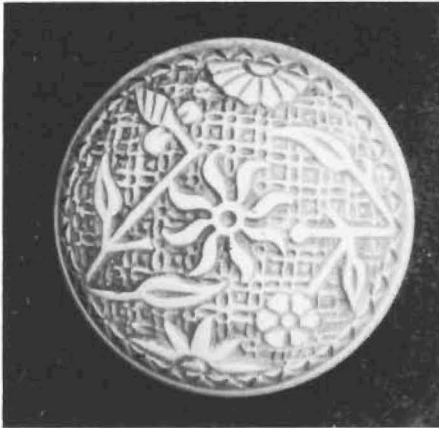
by Len Blumin

(The following regular feature is a supplement to Len Blumin's excellent book, Victorian Decorative Art. Copies of the book are available from ADCA for \$12 per copy.)

ASYMMETRIC DESIGNS

- B-133** Asymmetric version of H-212, rarely found.
B-134 Fascinating Branford-style knob (note the center strip with a similar border design of D-102. The edge design and design on the back of the knob are identical to that of knob F-110.
B-223 Spectacular "Dragon," with acanthus border, maker unknown.
B-224 This fish "beastie" is definitely out of the water, with acanthus leaf fins and tail!

B-133



B-223



B-134



B-224



Ornamental design in antique doorknobs, continued

Emblematic and Fraternal Knobs

- O-160** Fine classis Treasury Seal, by Russell & Erwin. similar to H&D's O-145.
O-161 Somewhat crude Treasury Seal variation, circa 1900.
O-162 Board of Education, City of Chicago. all upper case letters.
O-163 "The Port of New York Authority, Inland Terminal No.1." That is the New York State seal on the left ("Excelsior" and the New Jersey seal on the right ("Liberty and Prosperity"). A good reference for state seals and their meaning is the "Worldmark Encyclopedia of States," available at your library.

O-160



O-162



O-161



O-163



YALE & TOWNE

Our vacation is over and with it the thrill of seeking out doorknobs as we travelled from state to state. Our trip did yield some hardware and with it the questions of who made it, how old is it, what goes with it, etc. So when we got home Steve got out our catalogs and started researching. Not that he finds the hardware listed in our catalogs but it gives him the chance to review the copies.

Just finished going through the Yale & Towne Catalog #20--1910 looking at the emblematic knobs. This catalog copy was offered to the membership for the first time last spring.

Quoting Y & T: "It is often found desirable to indicate the character of a building by introducing one or more appropriate emblems upon the knobs, escutcheons, etc.

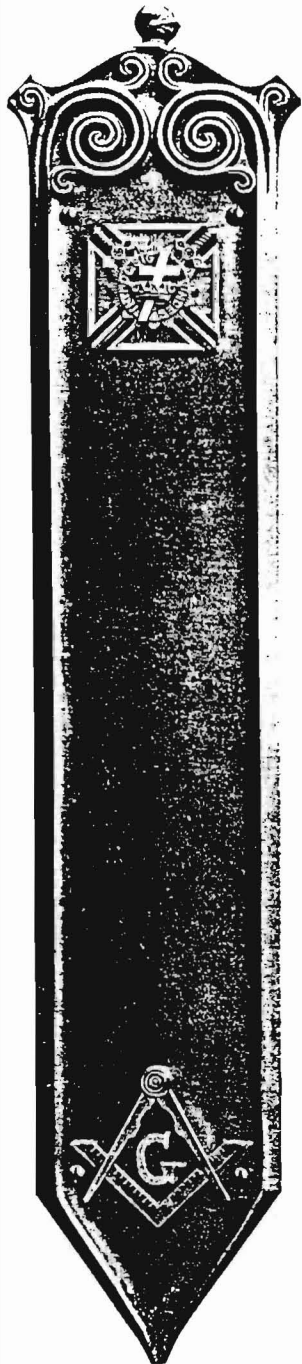
This is especially true of buildings of Masonic and other lodges, for clubs, societies, etc., in which case the emblems of regalia, badges, etc., can be availed of. Also of municipal, state or government buildings, where the coat of arms or public seal may be introduced, and of buildings for railroad companies, banks, etc., where the name or seal of the corporation is frequently utilized.

We invite inquiries and correspondence relating to the production of this class of work, for which we have unequalled facilities. Sketches will be furnished in accordance with clients' ideas or requirements, or we will elaborate sketches sent to us and submit models if desired." The possibilities were endless for this kind of hardware.

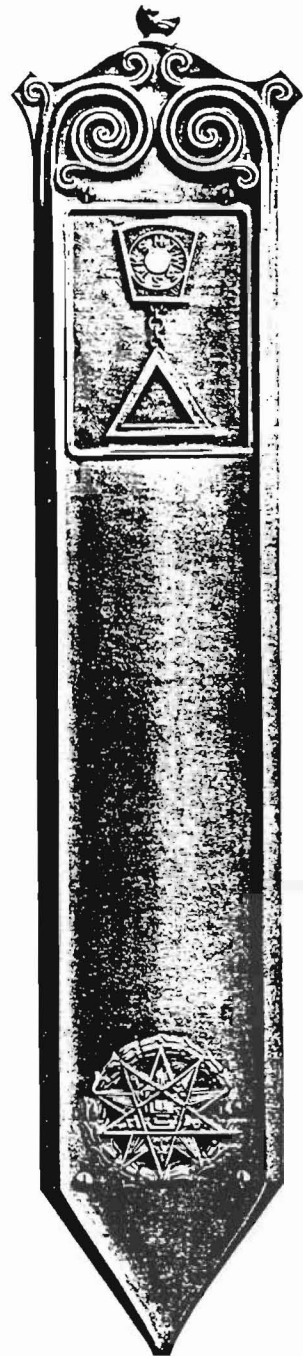
With the convention looking over our shoulders, we are busy getting ready for it. We will have some display copies of catalogs at the Archives table. Be sure to stop and look through them even though we will not be offering them for sale yet.

See you at the convention!

Bob and Steve



No. LVB1730



No. GVB1730



Nos. HVB35 and H223



Nos. KVB37 and H223

Designs with Emblems
YALE & TOWNE

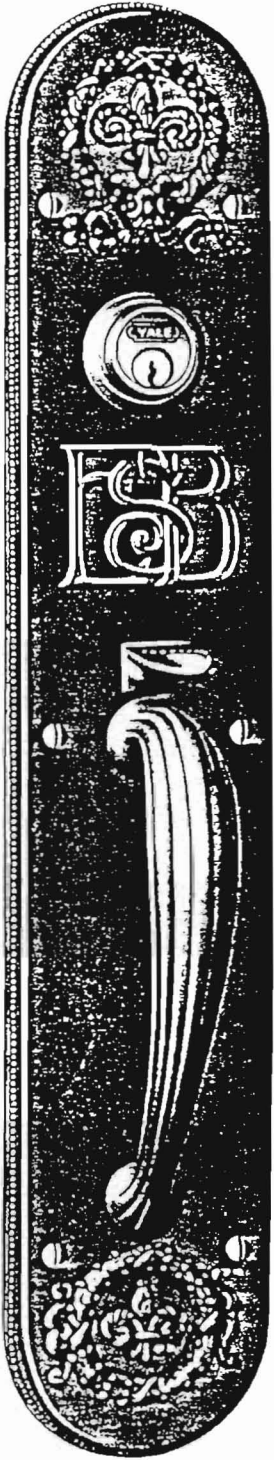


Fig. 17 Nemours
 Plate 21 $\frac{3}{4}$ x 4 ins.

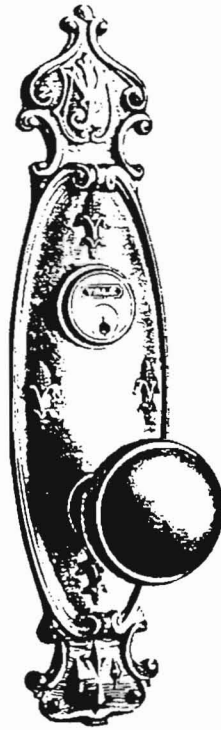


Fig. 18 Special
 Plate 12 $\frac{3}{4}$ x 3 ins.
 Knobs 2 $\frac{1}{2}$ x 2 $\frac{1}{2}$ "



Fig. 19 Special
 Plate 15 x 3 $\frac{1}{4}$ ins.
 Knobs 2 $\frac{1}{2}$ x 2 $\frac{1}{2}$ "

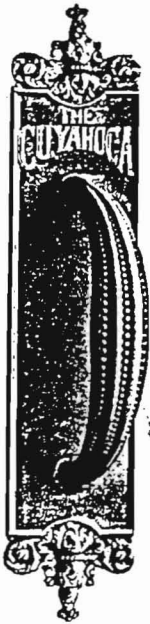


Fig. 20 Amboise
 Plate 12 x 2 $\frac{1}{2}$ ins.
 Grip 6 "



Fig. 21 Special
 Plate 11 $\frac{3}{4}$ x 3 ins.
 Knobs 2 $\frac{1}{2}$ x 2 $\frac{1}{2}$ "



Fig. 22 Beaumont
 Plate 21 x 4 $\frac{3}{4}$ ins.

Above are a few examples of this special work for which we have unequalled facilities.



CATALOG #20 1910

Letter to Editor

RE: European Knobs

So, Debbie and Rick have been to Europe and "gave up trying to learn the word for doorknob in different languages." I have never been to Europe and their article took me back some 20 years ago, when I went to the local library and looked up, in the foreign language section, how to spell and pronounce door hardware related words.

The following was taken from my notes. I am aware they may be misused, because the order of the words make a great difference, I understand, in the form of the word or the word, itself as it comes in a sentence or phrase.

I chose to start with "Center door knob on plate" because that was what the U. S. foreign export catalogs indicated was popular on the large doors of Europe.

Dutch: VOORDEURKNOP (front door knob) MET(with) SCHILDEN (plate). ACHTERDEURKNOP (back door knob) Plural of KNOP was KNOPFE.

French: BOUTON (knob) SUR PLAQUE (plate) POUR EXTERIORS(outside).

German: TURKNOPF (doorknob) AUF SCHILD (plate) MIT (with).

Spanish: PERILLA (knob) de (of) PUERTA (door).

If the knob turned, that is, both sides of the assembly turned, these words applied: for "knob":

Dutch: KNOPKRUK.

German: KNOPFDRUCKER.

Italian: LAQUEUS.

U.S.: Lever handle, plate, and rose was:

Dutch: KRUK (handle), SCHILD (plate), EN ROZET (rose).

German: TURDRUCKER, (TUR-door, DRUCKER-assembly or working parts) SCHILD (plate), UND ROZETTE (rose).

But, maybe next time your interest will turn to locks, in which case the following may be applied:

Serrature	-	Italian
Cerrodure	-	Spanish
Serrure	-	French
Schloss	-	German
Slot	-	Dutch
Laas	-	Danish
Las	-	Swedish
Loca	-	Icelandic
Loke	-	Welsh
Loquet	-	French
Glas	-	Irish

(It should be understood that not all sources used the same terms) (NOTE: To Debbie and Rick: No guarantee is implied that the use of these terms by English speaking travelers will be regarded with an outpouring of specimen.)●

Maude Eastwood

The doorknob exchange

Members are reminded that your dues entitle you to advertise items for sale, trade or wanted at no charge.

FOR SALE. door hardware collection. For more details write or call.

O. E. Herseth (#339),
Space S,
1388 Longfellow Ave.,
Chico, CA 95926.
PH: (916) 345-0676.

WANTED. Single roses, B-104, B-116, J-218, K-104, K-112, K-302. Two knobs each B-127, D-105, J-202, F-114. Any or all, brass only.

Stephen Rowe (#287)
85 Jasmine Ave.
Clovis, CA 93611

FOR SALE AND TRADE. Thousands of doorknob and escutcheon plates. October 8-11, ADCA Convention, Gaithersburg, MD.

Roster Update

#90

Steven Prael
Brass Bed Antiques
329 Canal Park Drive
Duluth, MN 55802

#341

Anne Marie Ferguson
Off The Wall
P.O. Box 4561
Carmel, CA 94321

#342

John J. Becker
Quarters, A-42
Vallejo, CA 94592

DEADLINE

All ads, material and articles for the November/December 1993 issue of **The Doorknob Collector** should be in the hands of the editors by October 25, 1993.