



The Doorknob Collector

Number 53

May - June 1992

Progress report on traveling display

by Arnie Fredrick

Following a discussion and recommendation from the Board of Directors of ADCA, we are in the development stage of a display of the best antique door hardware available. The goal is to build a display that can be shipped around the country for our members to use at their local library or museum or for special events such as fairs, etc.

The selection of items to be displayed will be done by Maud Eastwood and John Holland. Hopefully some of the items selected will be donated to the Club and the others loaned with ownership retained by the members. Complete insurance coverage will have to be obtained by the Club since most shippers will not insure valuable antiques.

We envision a high quality display protected by Plexi-

glass and sealed to prevent the theft of individual items along with a sturdy shipping carton. In order to ship by United Parcel Service, the size of the shipping carton will be limited to about 6" x 36" x 36" which means we may want to make it in two sections. Contact has been made with the Iowa Historical Society for recommendations as to the size and shape which would be the most appealing for libraries and museums.

The long-term goal of the Club is still to have a permanent museum of our own someday. But since it may be years before we have the financial resources for that, we believe a traveling display will be a good way to get started. The display could be available at each annual convention and then reserved

for perhaps up to thirty days by individual members for use in their local communities.

Although no budget has been established yet, we already have \$375 in a special fund which has been donated by three of our members. Additional donations will be needed.

Any comments or suggestions you might have on the construction and use of the display will be sincerely appreciated. ■

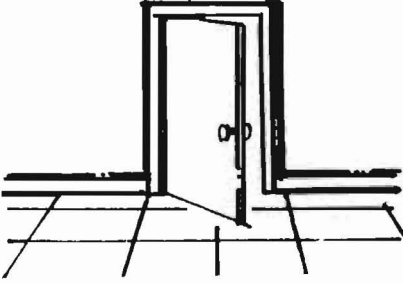


Illinois State Seal

ADCA Convention, Elgin, IL, August 1-4, 1992

THE OPEN DOOR

by ray nemec



How old are you? Well, we did a little survey from the ADCA renewal forms and found the median age of a member is about 55. We also found 30% of the members are over 65, 28% are between 51 and 65, 32% are between 36 and 50, 9% between 20 and 35 and only 1% of our members are under 20 years of age.

One of our on-going goals is to keep improving communications with you. Keeping this in mind, we have added a FAX machine. You can now send newsletter material, letters and questions to us via the FAX line. And we can respond to questions much faster.

A typical one page letter sent to the West Coast from Naperville is just 24 cents via FAX as compared to the 29 cents postage plus envelope via U.S. Mail. Our FAX number is (708) 357-2391.■

I recently attended an antique show in Atlantic City. It is called the "Atlantique City Show."

I was pleased to see Dick Hubbard there... pleased but not surprised as there is an unfounded rumor that Dick makes every show or flea market within a two day's drive of Hackensack, New Jersey.

Quite a surprise was Don Worming from South Paris, Maine!

The first few hours of the show are very critical as the whole show becomes crowded by noon...would you believe a mother with a stroller and two children under five in a convention hall with 1,500 dealers?

So....it was just a brief, polite chat and then off to the races.

Atlantic city is not unique, I understand that with recent changes, Brimfield is probably worse as there are absolutely mad scrambles as different fields are opened.

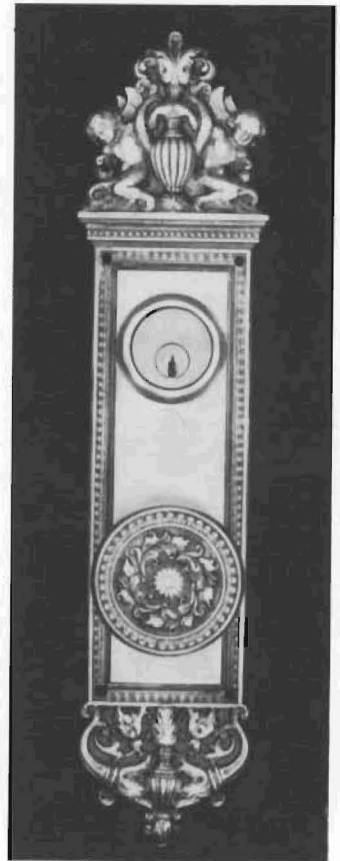
What's the point? The point is that the ADCA annual convention is "THE" place to come to socialize, to talk doorknobs, and to learn. (If you also want to trade or buy, that's OK.)

Good conversation with fine people who share your interests is tough to beat. The educational presenta-

tions alone are invaluable.

This is one strong recommendation to attend Elgin, Illinois in August. Now that income tax time is over, make your reservation, pack your bags, bring some knobs, and find your galoshes in case Chicago is not dried out.

Hope to see you there....■



The Doorknob Collector

Published six times a year by Antique Doorknob Collectors of America, Inc. P.O. Box 126, Eola, IL 60519-0126.

Raymond and Loretta Nemeč, Editors.

Phone: 1-708-357-2381

FAX: 1-708-357-2391

Printed by Sun Printing, Naperville, IL

Annual Membership in USA: \$20.00

Foreign rates on request.

IC Railroad knob is 100

by Art Paholke

Decorative escutcheon plates and door knobs were very popular before the turn of the century. This ornament came from the Illinois Central Railroad Building in Chicago, Illinois. It was built in 1892. The school of design is known as Colonial and the style is New York. It was produced by the P. & F. Corbin Co.

The Illinois Central Railroad Depot was located at Park Row (East 11th Place), Chicago, Illinois.

In the early 1800's The Illinois Central Railroad skirted Lake Michigan from the south line of the city limits to the river. In 1850 the railroad company secured the unoccupied portion of the Fort Dearborn Reservation from The United States government for the sum of \$45,000.00.

By an act of the Illinois State Legislature they were given the right to a tract 300 feet wide east of a line parallel to Michigan Avenue and 400 feet distant from that thorough fare.

Built in 1892 by Bradford L. Gilbert, this depot was to serve as its major

Chicago terminal and to house its tenants including the Michigan Central and the "Big Four" of the New York Central.

The station which was to have been replaced in accordance with the Lake Front Ordinance of 1919, remained until 1974.



It is evident that the art of a new country like the United States must be in most intimate connection with the style of art which predominates in the original country of the artist. This is the reason why styles of almost all the European States were originally represented in America. After a time, however all these different styles became united with one another forming themselves into the so-called Colonial Style. The building erected in America from 1725 to 1775 correspond somewhat to the Queen Anne and Georgian Styles in England.

The best country houses were found in Virginia and Maryland, while in Florida and California, on the other hand, the Spanish Renaissance Style predominated.

Art Paholke

Relief vs relieved finish

by Maude Eastwood

The term, relief and relieved, define two processes used in the manufacture of ornamental builder's hardware. Technically, these processes are unrelated, while in use they are often closely related. Relief applies to form; relieved applies to finish.

In regard to form, the definition of relief reads: "Carved so as to project from the surface," or, "A figure or design cut out and modeled in relief." In this case the meaning is amply illustrated in the examples of knobs on page A-1 of Len Blumin's **Victorian Decorative Art**. The Doggie, Lion and Irish Setter are excellent examples of hardware ornamentation executed in relief---the Lion in incredible high relief.

In regard to finish, the definition of relieving reads: "Highlighted, as in using color to show comparison," or, "contrast of light with dark." In builder's hardware this is accomplished thru certain technical processes, the results of which are clearly shown on page three of the color insert pages of **Antique Builder's Hardware**, (upper right second line). This fa-



miliar design displays the dark background and the brushed and buffed high parts of Mallory Wheeler's "Water Mark" patented design with Oriental motif.

Therefore, a specific hardware specimen is said to be both in "relief" and "relieved" if decoration has been raised above a flat surface and if the background has been darkened and the raised parts wheeled or polished to expose the base metal. an escutcheon plate or knob is never said to be relieved in form if the surface is flat, yet it may be relieved in finish thru oxidation or brushing. Early trade catalogues do not include the use of the word, relief, though an overwhelming number of the designs were in relief. The one relieved finish listed in the 1884 Yale & Towne catalogue is simply called "Ebonized Bronze"--the background or 'Matte' being dead black and

the pattern finished bright. Finishes for relief surfaces were "in" in the late 1880's and 1900's. Yale & Towne listed eight background colors in 1893 (dropping the number to three by 1904,) this in addition to a large number of plain finishes. The 1893 catalogue apparently was the first catalogue to define relieved surfaces: "Relieved surfaces are for ornamental hardware in which the "Matte" or low parts are colored, and the high parts finished in the natural color of the metal." By 1910, Yale & Towne offered both plain and relief hardware with relieved finishes. The style of architecture had changed and the style of hardware reflected this change. The following finish options were listed: transverse relief, irregular relief, vertical relief and center relief, for plain surfaces.

In the so-called "Modern" period of architecture--mid - 1930's -- more involved methods of relieving were undertaken, as was evidenced in Sager's 1937 catalogue and more finishes developed. Three types of relieving were covered:

(continued on page 6)

Ornamental design in antique doorknobs

by Len Blumin

(The following regular feature is a supplement to Len Blumin's excellent book, *VICTORIAN DECORATIVE ART*. Copies of the book are available from ADCA for \$11 per copy.)

EMBLEMATIC & FRATERNAL KNOBS

- O-154 The Oregonian. You should see the backplate. See TAD p.117.
O-155 Knights Templar. Yale & Towne, Sargent and others. A knob used in prominence at the Chateau Frontenac, Quebec City.
O-156 Probably from a synagogue.

O-154



O-155



O-156



INDEX

To the classification system.

A Representational designs

B Asymmetric designs

C Odd-shaped knobs

D Field or Diaper patterns

E Spiral and Swirls

F Twofold Symmetry

G Threefold Symmetry

H Fourfold Symmetry

I Fivefold Symmetry

J Sixfold Symmetry

K Eightfold Symmetry

L Radial Symmetry

M Concentric Symmetry

N Oval Knobs

O Emblematic & Fraternal knobs

RELIEF

(cont'd from page 4)

1. On flat surfaces by brushing off (or relieving) part of the oxidation.
2. On embossed designs, brushing to leave only the recessing dark.
3. On sanded surfaces, where the oxidation remains in the pits.

Understanding this correct terminology should be of benefit in your quest for specific hardware designs and finishes..

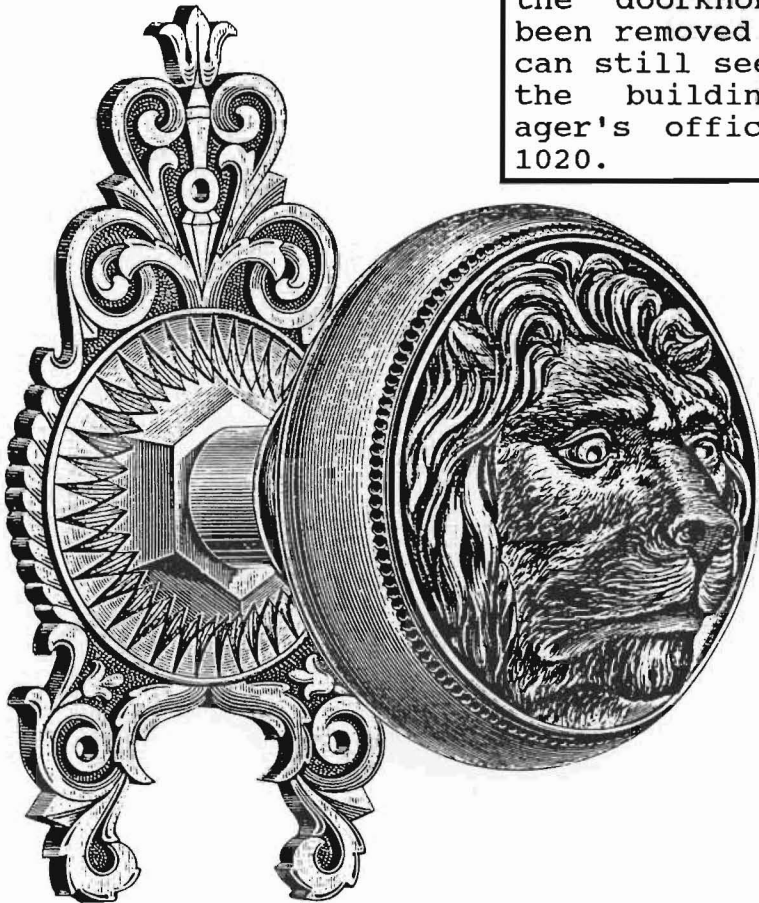
'T' FOR TRIBUNE

On the southeast corner of Dearborn and Madison streets in Chicago stands the Old Tribune Building. The Tribune built the 17 story publishing plant and office building in 1902. The newspaper company occupied the building until 1925, when it moved to its current location, Tribune Tower.

Until recently, the doorknobs to the offices bore the initial "T," the last reminder of its old tenant. Most of the doorknobs have been removed but you can still see one in the building manager's office, room 1020.



As a retired professional photographer I have often thought of a way to identify doorknobs for trading and etc. I have used Polaroid, the xerox machine, rubbings and even a free hand sketch, but the other day it dawned on me that a video camera could revolutionize the way we trade. Since most people have VCR's and/or video cameras one could send tapes of their tradable items to fellow collectors. Videos could be used as an educational tool and all kinds of other things. Perhaps a video of the highlights of the 1992 Antique Doorknob Collectors or America, convention for those who can't make it, a possibility?.



Patented June 7, 1870.



Obituary



EMMET WIEMER

Emmet Wiemer, an ADCA charter member and designer of the club's official logo, died of heart failure May 2, 1992 at his home in West Sedonia, Arizona. He was 85.

David Emmet Wiemer was born January 23, 1907, at Omaha, Nebraska. He married Marjorie Holstein on May 25, 1935 in Omaha. They moved to Los Angeles, California, in 1941. Mr. Wiemer had started out working at his father's paint store in Omaha but spent most of his working career as a Superintendent in maintenance for school districts in Southern California.

Emmet had an interest in antiques when, in about 1965, he picked up his first antique doorknobs. He immediately saw many artistic possibilities in displaying knobs. Through the years he added to his doorknob collection and developed many creative displays.

When ADCA asked for logo designs, Wiemer's

sketch was selected. The logo is used as part of **The Doorknob Collector's** nameplate.

Emmet Wiemer had attended all but one of ADCA's annual conventions, missing only the 1987 event at Des Moines, Iowa.

In addition to his wife, Marjorie, Wiemer is survived by three daughters, Patricia Monson, Carole Colgan, Christina Shores, two sons, Ted and Gary, eight grand-children and eight great grand-children.■



**FROM THE ARCHIVES
WITH ARCHIVISTS
Steve/Barb Menchhofer**

Twice a year we send out order blanks for copied catalogs from the Archives. The reason we do it only twice a year is to keep the wear and tear on the master copies to a minimum. If you should send us an order at any other time we will hold it and process it the next time catalogs are offered to the membership.

You will find an order blank inside this issue of **The Doorknob Collector**. All information is on the order blank including the three ways available to order your catalogs. All orders must be placed by July 1, 1992.■

HARDWARE CATALOGS

The following is a list of P. F. Corbin catalogues known to exist. They are in hands of collectors, museums and/or libraries. If you have a P. F. Corbin catalogue not listed below, please furnish us with the year, catalogue number and the amount of pages.

P. F. CORBIN

<u>YEAR</u>	<u>CAT.#</u>	<u>PAGES</u>
1867		135
1871		160
1876		618
1881		585
1895		802
1896	Volume A	288
1905		938
1912		483
?	26	483
1927	27	?
1928		662
1956		348
1972		200
1975		234

DEADLINE

All ads, material and articles for the July-August 1992 issue of **The Doorknob Collector** should be in the hands of the editors by June 25, 1992.

The doorknob exchange

Members are reminded that your dues entitle you to advertise items for sale, trade or wanted at no charge.

FOR SALE. ADCA Club Doorknobs (O-150). Walnut body, brass stems, design in club logo. Laser engraved. \$27 each includes shipping. ADCA, Dept DK, c/o Bill Byington, 415 Magowan Ave., Iowa City, IA
PH:319-338-0982.

FOR SALE. Doggie Door-knob Coffee Mug by ADCA. A limited supply remains. \$8 each includes shipping. ADCA, Dept CM, c/o Bill Byington, 415 Magowan Ave., Iowa City, IA
PH: 319-338-0982.

WANTED. I am requesting your participation in creating a new perception of antique hardware. I, Liz of Liz's Antique Hardware, am in the process of writing a book. Often I am in need of hardware to use in photographs that are essential in describing its historic value. At this time I am lacking in school-house emblematics. If you are so inclined to loan them I will pay all shipping expenses and give credit. Thank you. Please contact Liz Gordon, (#111) Liz's Antique Hardware, 3821 Park Blvd., San Diego, CA 92103.
PH:619-297-6502.

WANTED. Someone to join me in driving to Elgin for the ADCA convention and spending four extra days in bicycling some of the trails in that area, leaving New Jersey, July 30 and returning August 8. If interested call Rich Kennedy (#238)
PH:201-635-6338.

WANTED. Sample of your doorknob calling cards (before June 1, 1992) for unique convention display.
Send to: ADCA-Dept LN
P.O.Box 126
Eola, IL 60519

LIZ'S Antique Hardware Matching Service. Send photo, sizes and quantity. All requests are kept on file until located. 3821 Park Blvd. San Diego, CA 92103.
PH:619-297-6502or 3501



Exhibit shows Chicago's top 10 in architecture

Chicago

Chicago's 10 most architecturally significant buildings, as chosen by a recent poll of members of the Chicago Chapter of the American Institute of Architects, will be featured in a new exhibit on Chicago architecture at Sears Tower.

Many of the buildings are visible from Sears Tower Skydeck.

The list includes (in alphabetical order):

- The Auditorium Building (1889), 430 S. Michigan Ave.
- Carson Pirie Scott Store (1899, 1904), 1 S. State St.
- 860-880 Lake Shore Drive (1949-51).
- John Hancock Center (1969), 875 N. Michigan Ave.
- Monadnock Building (1891, 1893), 53 W. Jackson Blvd.
- Robie House (1910), 5757 S. Woodlawn Ave.
- The Rookery Building (1888) 209 S. LaSalle St.
- Sears Tower (1974) 233 S. Wacker Drive
- 333 West Wacker Drive (1983).
- Tribune Tower (1925), 435 N. Michigan Ave.

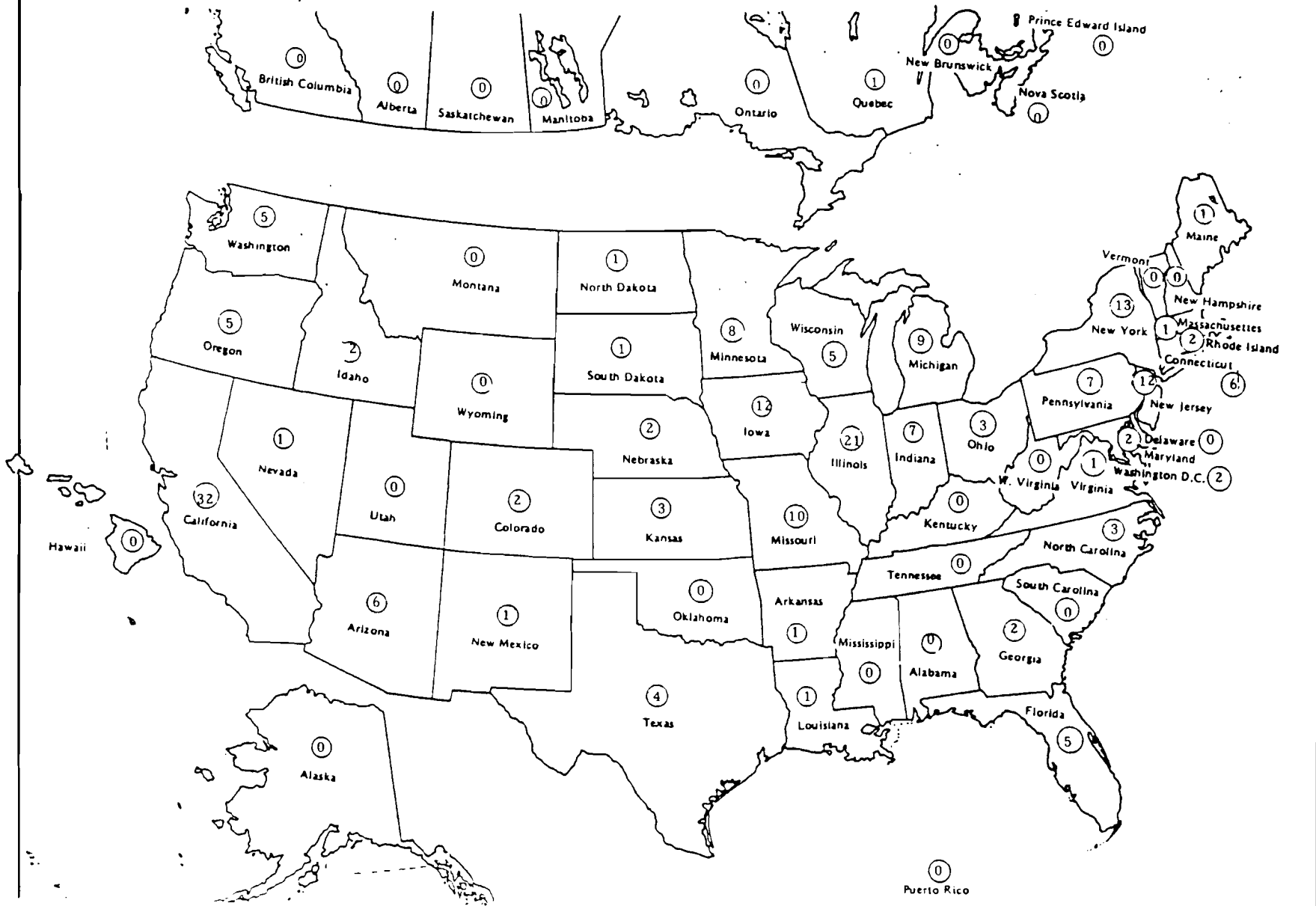
Reprinted from the Beacon News, Aurora, Illinois

ADCA Membership by Year

1981	-	43
1982	-	71
1983	-	82
1984	-	90
1985	-	100
1986	-	105
1987	-	118
1988	-	140
1989	-	164
1990	-	178
1991	-	192
1992	-	200

Geographic Distribution of ADCA Members in U.S. and Canada

— 1992 —



ZIP	NAME	ADDRESS	CITY, STATE	PHONE	Mbr#
60519-0126	Antique Doorknob Collectors of America	P. O. Box 126	Eola, IL	708-357-2381 FAX 357-2391	
01109	Brusnicki, Joseph E.	616 Alden St.	Springfield, MA	413-782-3339	236
02838	Masse, Paul	12 Mowry St.	Manville, RI	401-762-6468	197
02840	Wilson, Web	24 Franklin St.	Newport, RI	401-846-7010	24
04103	Warming, Don	48 Back Cove Estates	Portland, ME	207-879-7103	235
06016	Thrall, Ed and Flicka	145 Chamberlain Rd	Broad Brook, CT	203-623-5278	53
06066	Eklund, L. G. (Vern)	444 Bolton Hill	Vernon, CT	203-875-6132	247
06424	Roenigk, Elise	26 Barton Hill	East Hampton, CT		181
06450	Hobbs, Peggy Lee	306 E. Main St.	Meriden, CT	203-237-4602	185
06786-0104	Hennessy, Thomas F.	Lock Museum, Box 104	Terryville, CT	203-589-6359	164
06850	Haynes, Herman B.	256 W. Norwalk Rd.	Norwalk, CT		230
07042	Hart, Jeff R.	185 S. Mountain Ave.	Montclair, NJ	201-744-1807	275
07042	Joslyn, Allen & Gunilla	249 Valley Road	Montclair, NJ	201-783-9411	12
07052-4507	Estell, Ann E.	78 Hillside Ave.	West Orange, NJ		191
07110	Dokachev, Sandra L.	315 Nutley Ave.	Nutley, NJ	201-667-8561	193
07463	Taylor, Walter	26 Waldwick Ave.	Waldwick, NJ	201-670-6521	241
07543-0055	Van Kluyve, John	P. O. Box 55, Park Sta.	Paterson, NJ	201-345-4439	194
07601	Hubbard, Richard C.	162 Poplar Ave.	Hackensack, NJ	201-342-1274	192
07901	Bober, Sally	27 Oxbow Lane	Summit, NJ		199
07928	Kennedy, Rich	7 Lafayette Place	Chatham, NJ	201-635-6338	238
08560	Bremble, Ted	3 State Park Drive	Titusville, NJ	609-737-3605	228
08690	Applegate, Win L.	318 N. Burtis Ave.	Hamilton Square, NJ	609-586-7285	110
08873	Orr, Jeannie Mallow	132 Burns St.	Somerset, NJ		189
10018	Hausman, Richard D.	Belding Heminway, 1430 Broadway	New York, NY		270
10128	Stavis, Barrie	70 E. 96th Street	New York, NY	212-831-7174	289
10549	Chace, Mike	R. D. No. 2, Bayberry Ln., Mt. Kisco	NY	914-234-3984	234
10598	Millonzi, Victor	54-C Kirby Close	Yorktown Heights, NY		259
11238	Sinisi, Rosaria	16 Clifton Place	Brooklyn, NY	718-638-4966	223
11215	Stocker, Julie, Old House Journal,	435 Ninth Street	Brooklyn, NY		261
11516	Blam, Cheryl	573 Park Ave.	Cedarhurst, NY	516-295-5511	204
11516	Blam, Norman	573 Park Ave.	Cedarhurst, NY	516-295-5511	176
13207	Gaal, Barbara J.	304 Summit Ave.,	Syracuse, NY	315-424-8072	217
13617	Pearson, Donald E.	38 Judson St.	Canton, NY	315-379-9151	63
14214-1933	Sponaugle, Dale	247 Summit Ave.	Buffalo, NY	716-834-3970	85
14607	Caulfield, Karen L.	41 Brunswick St.	Rochester, NY		274
14610	Long, Rebecca	60 Cathaway Park	Rochester, NY		273
16435-0333	Ladner, Alan & Laura	P. O. Box 333	Springboro, PA	814-587-3121	277
17019	Coen, Richard & Mary	1160 Old Mountain Rd	Dillsburg, PA		225
17368	Stabley, Steven M.	R. D. 2, Box 72	Wrightsville, PA	717-252-4315	86
18940-0605	Onraet, Maurice	P. O. Box 605	Newtown, PA	215-368-9795	132
19075	Rodder, Robert W.	1203 Bruce Rd	Oreland, PA	215-885-1488	167
19105-0238	Romani, James	P. O. Box 238	Philadelphia, PA		239
19464	Hollabaugh, Roy	546 High Street	Pottstown, PA	215-323-2765	165
20003	Champlin, Steven & Deborah	323 "A" Street, S. E.	Washington, DC		286
20009	Donetta George/Ron Allan. The Brass Knob, Inc.	2311 18th St., N. W.	Washington, DC	202-332-3370	229
20879	Simons, Richard P.	20113 Darlington Dr.	Gaithersburg, MD	301-963-0383	84
21223	Swegle, Eric B.	1403 W. Baltimore St.	Baltimore, MD	301-566-3845	143
22314	Curry, Keith	P. O. Box 621	Alexandria, VA	202-319-0283	222
27370	Wardell, Charles	P. O. Box 195	Trinity, NC	919-434-1145	9
28112	Wesley, Newton P.	1429 Crescent St.	Monroe, NC	704-289-9561	206
28209	Boothe, Dothan R.	3100 South Boulevard	Charlotte, NC	704-527-8717	73
30038	Bolen, Lawrence C.	17 Tree View Drive	Lithonia, GA	404-981-1752	113
30306	Stogner, Judith	795 Clemont Drive	Atlanta, GA	404-874-1821	170
32750	Isaacs, Steve	730 Woodbridge Pl.	Longwood, FL	407-831-4728	285
33040-5000	Smith, Frederic D.	Commanding Officer EOD Mobile Unit 4	Key West, FL		208
33432	Luvisch, Harold M.	838 Marble Way	Boca Raton, FL	407-338-5723	102
33857	Burger, Eugene & Betty	201 Pine Terr., Box 56	Lorida, FL		186
33908	Magnus, Fred & Ethladel	5910 Lucina Court Shell Point Village	Fort Myers, FL	813-454-5231	10
44077	Wilder, Bud & Ruth	13244 Girdled Rd.	Painesville, OH	216-254-4075	125
44140	Meermans, Carol K.	30516 Maple Drive	Bay Village, OH	216-871-8683	34
45750	Bennett, James C.	Rt 3, Box 300	Marietta, OH	614-374-2418	280
46148	Johnson, Don/Swaim, Connie	RR #2, Box 380	Knightstown, IN		20
46219	Niedenthal, Judy	336 N. Audubon Road	Indianapolis, IN	317-359-1703	108
46220	Shaffer, A. G. Terry	5688 No. Broadway St.	Indianapolis, IN	317-253-5203	19
46224	Mann, Joe & Julie	5364 Speedway Drive	Speedway, IN	317-244-4306	70
46224	Menchhofer, Barbara	5538 West 25th Street	Speedway, IN	317-291-6043	233
46224	Menchhofer, Steve	5538 West 25th Street	Speedway, IN	317-291-6043	60
46227	Johnson, Jerry H.	830 E. Southport Rd.	Indianapolis, IN	317-784-8878	161
48009	Osborne, Marie & John	432 Arlington	Birmingham, MI	313-642-5174	104
48507	Nichols, Norman B.	1423 Williamsburg Rd	Flint, MI	313-767-5767	38

1992 ADCA MEMBERSHIP ROSTER BY ZIP CODE, CONTINUED - page 3

ZIP	NAME	ADDRESS	CITY, STATE	PHONE	Mbr #
49073	Snow, Homer W.	732 E. Sherman St.	Nashville, MI	517-852-9455	149
49286	Dieter, Susan P.	9104 Billmyer Hwy	Secumseh, MI	517-423-6256	256
49345	Madsen, Bettie J.	10415 Alpine Ave.	Sparta, MI	616-887-1700	240
49503	Jarvis, Florence E.	127 Prospect N. E.	Grand Rapids, MI	616-454-7568	24
49505	DeLange, Gene & Miriam	1010 Applewood Dr, NE	Grand Rapids, MI	616-459-0800	94
49506	Ondersma, Philip & Karen	P. O. Box 6406	Grand Rapids, MI	616-459-2550	195
49682	Gardner, L. W. (Bill)	R. R. #2, Box 696	Suttons Bay, MI	616-271-4710	262
50212-0728	Powers, Daniel L.	P. O. Box 728	Ogden, IA	515-432-2600	271
50265-2986	Still, Allen & Janet	415 46th Street	W. Des Moines, IA	515-224-0473	37
50311	Upton, Dean	6520 Forest Ct.	Des Moines, IA		158
50313	Liesman, Barbara	4004 Oxford	Des Moines, IA	515-243-4025	32
50595	Cook, Don & Wanda	2108 Des Moines St.	Webster City, IA	515-832-5039	76
50669	Stone, Carol	601 Pioneer Road	Reinbeck, IA	319-345-2348	276
50677	Fredrick, Arnie	221 2nd Street, S. E.	Waverly, IA	319-352-4070	1
50864	Cooney, Jack	105 So. 3rd Ave.	Villisca, IA	712-826-9622	77
51529	Leaders, Gerald & Ardythe	901 Jeroleman St.	Dunlap, IA	712-643-5970	14
52241	Stellinga, Mark & Connie	416 Sierra Trail	Coralville, IA	319-354-7287	216
52246	Byington, Helen & Bill	415 Magowan Ave.,	Iowa City, IA	319-338-0982	41
52404	Anderson, James P.	5542 Kirkwood Blvd, s. w. apt 7	Cedar Rapids, IA		88
53211-1737	Beutner, Jeffrey G.	2503 E. Olive St.	Milwaukee, WI	414-271-8767	98
53233	Filardo, Gregory K.	2432 W. Kilbourn Ave.	Milwaukee, WI	414-931-0982	97
53545	Zyc, Ray & Kae	1042 Milton Ave.	Janesville, WI	608-754-2643	23
53560	Peterson, Dan & Judy Ann	Rte 2, 5372 Mahocker Rd.,	Mazomanie, WI	608-767-3727	16
54601	Hatch, Lois	342 South 23rd	LaCrosse, WI		7
55403	Mesken, Charles, P. O. Box 3536,	Upper Nicollett Sta.	Minneapolis, MN	612-874-1440	62
55407	Miller, Keith E.	3541 Park Ave. So.	Minneapolis, MN		209
55410	Moen, Gene S.	4813 Vincent Ave., So.	Minneapolis, MN	612-925-3201	66
55416-4558	Widseth, Bradley	3430 List Pl., Apt 802	Minneapolis, MN	612-781-0682	87
55419	Kaiser, Lee	6040 Morgan Ave. So.	Minneapolis, MN	612-861-6215	5
55082	Huntsman, Jim	416 So. 4th St.	Stillwater, MN	612-439-8294	54
55113	Bednar, Charles	1132 W. Roselawn	Roseville, MN	612-489-1090	6
55802	Prahl, Steven	329 Canal Park Drive	Duluth, MN	218-722-1347	90
57078	Bouska, William	913 Pine St.	Yankton, SD	605-665-1376	203
58064	Warrey, Phillip & Lois	Box 3	Page, ND	701-668-2579	59
60010	Staszek, Doug	245 W. Lake St.	Barrington, IL	708-381-7327	267
60050	Lins, Sharon	3102 S. Woods St.	McHenry, IL	815-459-0976	279
60077	Friedman, Donald	4900 Jerome Ave.	Skokie, IL	708-679-4424	115
60091	Bettenhausen, Lee, AL Bar Lab.	127 Green Bay Road	Wilmette, IL	708-251-0187	281
60120	Balasa, Lillian & Richard	630 B Waverly Drive	Elgin, IL	708-695-4254	71
60305-5286	Hughes, Patrick K.	P. O. Box 5286	River Forest, IL	708-620-0190	120
60422	Warnes, Paul	2229 Marston Lane	Flossmoor, IL		255
60462	Zisser, John F.	8132 Colette Ct.	Orland Park, IL		249
60505	Wise, Richard W.	814 Bangs St.	Aurora, IL	708-898-8377	269
60514	Francik, Jeffrey M. A.	113 Hiawatha Drive	Clarendon Hills, IL	708-323-7699	79
60534	Merenkov, Roger & Kay	7703 W. Joliet Road	Lyons, IL	708-442-5535	61
60559-3329	Nemec, Thomas A.	6723 S. Vail, Apt 4	Westmont, IL		242
60563-2233	Nemec, Loretta & Raymond	1424 Heatherton Dr.	Naperville, IL	708-357-2381	8
60609	Sobczak, Edward J.	4944 So. Honore St.	Chicago, IL	312-476-4082	154
60614	Nemec, Jennifer	519 W. Deming, #3N	Chicago, IL		210
60616	Vittori, Louis J.	3318 S. Lowe	Chicago, IL	312-847-3071	103
60640	Lys, Stefan & Helene	4412 No. Ashland	Chicago, IL	312-728-8911	50
61011	Olafsen, David	20048 Free Church Rd	Caledonia, IL	815-389-2728	43
61356	Chelin, Florence F.	R 5, 2026 S. Main	Princeton, IL	815-875-1896	22
61480	Ryan, Helen & Orval	P. O. Box 404	Stronghurst, IL		202
62704	Leach, Junella & Glenn	42 Nottingham Road	Springfield, IL	217-546-8442	42
63104	Carton, Paul S.	3016 Geyer Ave.	St. Louis, MO	314-771-6437	201
63108	Fellenz, Bill & Mary	439 N. Euclid	St. Louis, MO	314-367-0214	263
63108	Fellenz, Dolores & William B.	4632 McPherson	St. Louis, MO	314-367-2171	30
63109	Komar, John F.	5240 Delor	St. Louis, MO	314-352-7744	159
63111	Arnold, Steve	7901 Michigan	St. Louis, MO	314-544-4103	260
63118	Fellenz, Debbie	2224 Cherokee St.	St. Louis, MO	314-776-8363	31
63118	Kelly, Rick	2224 Cherokee St.	St. Louis, MO	314-776-8363	231
63135	Tempel, Arlie W.	614 Hunters Ridge	St. Louis, MO	314-521-2171	283
63137	Mueller, Joe & Martha	1227 Roxton Drive	St. Louis, MO	314-867-7943	91
65714	Robertson, Ray & Mariellen	13 Deer Ridge Circle	Nixa, MO	417-725-3613	65
66061-3125	Miller, C. David, Broadway Collection,	250 No. Troost	Olathe, KS	913-782-6244	116
66103	Wendler, Kip	4129 Cambridge	Kansas City, KS	913-722-2547	147
67152	Bauler, Edward	317 East 15th	Wellington, KS	316-326-7190	257
68124-2204	Miller, Dorothy Ann	8074 Cedar St.	Omaha, NE	402-391-6015	21
68157	Chadonich, Alice J.	4701 Harrison St.	Omaha, NE		81
70817	Lee, Ruth	18317 Green Willow Dr.	Baton Rouge, LA	504-291-4763	258
71909	Paholke, Arthur R.	116 Hacienda Rd.	Hot Springs, AR	501-623-5708	51
75087	Goodson, Joe	101 Yankee Court	Rockwall, TX	214-771-4147	268

ZIP	NAME	ADDRESS	CITY, STATE	PHONE	Mbr #
77019	Pasternak, Gary	2515 Morse St.	Houston, TX	713-528-3808	105
78723	Hunt, Marilyn S.	7115 Creighton Ln	Austin, TX	512-929-7144	265
78753	Barnes, Russell	203 W. Caddo	Austin, TX	512-835-9510	288
80120	Carr, Robert C.	6473 S. Prince St.	Littleton, CO	303-794-2760	251
80013	Mast, Eileen	2077 S. Pitkin St.	Aurora, CO	303-696-1134	114
83301	Kunkel, Alex & Lori	Star Route	Twin Falls, ID	208-655-4381	
83316	Martin, Neva (Martin Ranches)	Route 1, Box 33	Buhl, ID		215
85018	Holland, John & Chlorene	3434 No. 47th Way	Phoenix, AZ	602-840-1945	4
85044	Gwillim, Roger & Marianna	11242 S. Shoshoni Dr.	Phoenix, AZ	602-893-2111	39
85281	Bright, Walter & Mildred C.	11 E. Papago Dr.	Tempe, AZ	602-946-4709	46
85281	Schirmacher, Stan	1725 Farmers	Tempe, AZ	602-967-5405	278
85749	Kraushar, Peter	10220 E. Rio de Oro Pl	Tucson, AZ	602-749-1122	272
86340	Wiemer, Majorie H.	Box 3088	W. Sedonia, AZ	602-282-4516	18
87111	Capels, William	9518 Adm. Lowell, NE	Albuquerque, NM	505-828-2702	215
89015	Hart, William & Jackie	1937 Moser Dr.	Henderson, NV	702-565-4752	108
90009	Visek, Jerry	P. O. Box 91395	Los Angeles, CA	310-325-0746	282
90066	Efnor, Steve	4256 Neosho Ave.	Los Angeles, CA	213-313-4124	47
90305	Wolski, Bud	9120 7th Ave.	Inglewood, CA	213-759-0344	20
91001	Verre, Robert C.	743 E. Palm St.	Altadena, CA		151
91010	Perris, Richard D.	1625 Calle Granada	Duarte, CA	818-359-9638	254
91209-0013	Bjornsen, Betty Kay	P. O. Box 13	Glendale, CA	818-247-7082	40
91790	Castaneda, Manuel	1320 S. Broadmoor Av	West Covina, CA	213-960-2301	250
92009	Bachman, Kent & Karen	865 Violet Ct.	Carlsbad, CA	619-438-2838	214
92103	Gordon, Liz	3821 Park Blvd	San Diego, CA	619-297-6502	111
92103	Nichols, Richard	4144 10th Ave.	San Diego, CA	619-497-0716	126
92260	Parkhurst, Harry & Ann	72-805 Willow	Palm Desert, CA	619-568-5440	131
92644-1397	Hill, George	9177 Garden Grove Blvd	Garden Grove, CA	714-636-5652	284
93013	Davidovich, Mark	919 Palm Ave., #3	Carpinteria, CA		25
93420	Richey, Matylda A.	428 Orchard Ave.	Arroyo Grande, CA	805-489-7186	35
93612	Rowe, Steve	85 Jasmine Ave.	Clovis, CA	209-299-8863	287
94041-1201	Mountain View Door Closer	171 Castro St.	Mountain View, CA	415-968-2285	55
94117	Decker, John & Sharon	517 Clatron Street	San Francisco, CA	415-552-6625	141
94117	Jones, Michael L.	104 Pierce Street	San Francisco, CA	415-621-7644	264
94501	Ruiz, Carlos	1232 Fountain St.	Alameda, CA	510-523-2214	52
94501-4843	Ruiz, James & Jeanne	3225 Briggs Ave Apt A	Alameda, CA	510-865-1445	246
94510	Rosenquist, James	334 Weldon Ct.	Benicia, CA		252
94521	Tanner, Brian & Kim	4352 Cheltenham Ct.	Concord, CA	415-798-9518	153
94559	Hutchings, Edwin & Lois	1576 Parker Ct	Napa, CA	707-255-2652	49
94566	Fleischer, Fritz K.	1873 Paseo Del Cajon	Pleasanton, CA	415-846-1034	48
94941	Blumin, Len & Patti	382 Throckmorton Ave	Mill Valley, CA	415-388-4990	3
95004	Peters, Frank	495 Carr Ave.	Aromas, CA	408-722-6090	44
95112	Raffin, Pete & Violet	990 So. 6th Street	San Jose, CA	408-298-5935	17
95204	Gurrola, William T.	3943 Dennis	Stockton, CA	209-465-4273	290
95240	Sheehan, Dan & Janice	11369 N. Highway 99	Lodi, CA	209-462-7488	184
95354	Fenderson, A. P.	221 El Rio	Modesto, CA	209-579-3294	78
95703	Bornino, Marge & Joe	P. O. Box 11999	So. Lake Tahoe, CA	916-577-7777	123
95939	Stroing, Clifford	P. O. Box 74	Elk Creek, CA	916-968-5184	58
97034	Smeltzer, Linda A.	1214 Hallinan Circle	Lake Oswego, OR	503-636-5221	136
97068	Varitz, William & Marjory	17828 So. Robinview Ct	West Linn, OR		57
97132	Campbell, Dean & Edith	612 No. Meridian	Newberg, OR	503-538-9185	11
97202	Fowler, Lynn	8070 S. E. 13th Ave.	Portland, OR	503-233-1874	29
97223	Shreve, Don & Elaine	8550 S. W. Holly Lane	Portland, OR	503-246-5879	83
98012-1368	Eastwood, Bill & Nancy	1118 142nd Pl., SE	Mill Creek, WA	206-771-7330	124
98072-2609	Eastwood, Maudie	P. O. Box 2609	Woodinville, WA	206-483-5848	2
98115	Sandwick, Nancy A.	8637 26th Ave, N.E.	Seattle, WA	206-524-6610	157
98277	Knox, Claude & Pat	196 W. Troxell Rd.	Oak Harbor, WA	206-675-4271	133
98501	Doyle, George J.	3700 Elizabeth Ave. SP#131	Olympia, WA	206-491-6312	26
G1R 1C4	Dion, Donald	176 de La Tourelle 3	Quebec, Que, Canada	418-522-8965	177

ANTIQUE DOORKNOB COLLECTORS OF AMERICACATALOG ORDER FORM

Copies of the catalogs listed below are available to members at the price indicated, which includes shipping charge. Copies are loose leaf, and unbound.

There are three possible order categories, but each catalog may not be available in all three categories. These three categories are:

Complete Catalog. In the case of a builder's hardware catalog, the book has been copied in its entirety. In the case of a general hardware catalog, only the builder's hardware section has been copied.

Selected Pages. Included are; title page, index, finish or other general hardware information pages, pages showing doorknobs, escutcheons, flush pulls, store door locks, push plates, cremone bolts, some mortise locks with ornate face plates, a few rim locks, furniture hardware, doorbells, keyhole plates, and limited miscellaneous hardware items that are offered in the same designs as shown doorknobs and escutcheons. In some cases, a few padlocks and keys are included.

Knob Design Pages. These pages pertain strictly to knobs and possibly some levers and escutcheons. Title and finish pages, if available, are included.

<u>NAME AND DESCRIPTION OF CATALOG</u>	<u>PRICE</u>	<u>QUANTITY</u>
<u>Baldwin Hardware Mfg. Co. - 1976</u> Contains some illustrations of Limoge porcelain knobs that some members acquired during the 1985 St. Louis convention. 8 page bulletin	\$ 2.00	_____
<u>Bayer-Gardner-Himes Co. - 1925</u> 101 total pages 81 selected pages 50 knob design pages	\$10.95 \$ 7.50	_____ _____
<u>Branford Lock Works - 1893</u> 34 selected pages (17 sheets)	\$ 2.55	_____
<u>Branford Lock Works - July 1, 1886</u> Locks, Knobs, and Hardware Complete copy - 451 pages (6 pages missing) 90 selected pages 27 knob design pages	\$56.40 \$12.15 \$ 4.05	_____ _____ _____
<u>Buhl Sons & Co. - 1884</u> Detroit, Michigan Complete catalog - 285 pages 171 selected pages 16 knob design pages	\$32.25 \$21.37 \$ 2.40	_____ _____ _____
<u>Chicago Hardware Mfg. Co. - 1895</u> Catalog No. 6 Complete catalog - 239 pages 108 selected pages 43 knob design pages	\$29.90 \$13.50 \$ 6.45	_____ _____ _____

Continuing Education Booklet - 1985 \$ 6.50 _____
 34 Questions and Answers - 47 pages

This booklet was compiled by John Holland from questions answered by members of ADCA. It contains educational material, such as: clues and/or signs in identifying age of hardware, insuring collections, glass manufacturing processes, listing of significant corporate collections in the U.S., and much more.

The Corbin - 1902-1903
 Schools of Design
 37 pages taken from 23 vol. monthly bulletins \$ 5.55 _____

P & F Corbin Fraternal Emblems - No Date
 Complete catalog - 23 pages \$ 3.45 _____

P & F Corbin:
Burnishing Room - 1870
 2 selected pages
Supplement to 1881 Catalog - Nov. 1, 1882
 3 selected pages
 5 total pages \$ 2.00 _____

P & F Corbin - 1874-5
 Hardware List. (Bronze)
 45 selected pages \$ 6.75 _____

Corbin Monthly Bulletins - 1902-1903
Lockology - 16 pages \$ 2.40 _____
Door Trims - 16 pages \$ 2.40 _____
Corbin Unit Lock Set - Selling Features
 16 pages \$ 2.40 _____
Corbin Unit Lock - Commercial Bldgs. Fur.
 16 pages \$ 2.40 _____
Corbin Unit Lock - Designs - 16 pages \$ 2.40 _____
Corbin Unit Lock - Residences Furn. 16 pgs. \$ 2.40 _____
Corbin Unit Lock - Residence followup 16 pgs. \$ 2.40 _____
New Corbin Designs - 16 pages \$ 2.40 _____

Corbin Unit Lock - Jobs Furn. - 16 pages \$ 2.40 _____
The Corbin - Vol I, #7-Nov. 1902, 16 pages \$ 2.40 _____
The Corbin - Vol I, #8-Dec. 1902, 16 pages \$ 2.40 _____
The Corbin - Vol I, #9-Jan. 1903, 16 pages \$ 2.40 _____
The Corbin - Vol I, #10-Feb. 1903, 16 pages \$ 2.40 _____
The Corbin - Vol I, #11-Mar. 1903, 16 pages \$ 2.40 _____
The Corbin - Vol I, #12-Apr. 1903, 16 pages \$ 2.40 _____
The Corbin - Vol II, #1-May 1903, 16 pages \$ 2.40 _____
The Corbin - Vol II, #2-June 1903, 16 pages \$ 2.40 _____
The Corbin - Vol II, #3-July 1903, 16 pages \$ 2.40 _____
The Corbin - Vol II, #4-Aug. 1903, 16 pages \$ 2.40 _____
The Corbin - Vol II, #5-Sept. 1903, 16 pages \$ 2.40 _____
The Corbin - Vol II, #6-Oct. 1903, 16 pages \$ 2.40 _____
The Corbin - Vol II, #7-Nov. 1903, 16 pages \$ 2.40 _____
The Corbin - Vol II, #8-Dec. 1903, 16 pages \$ 2.40 _____
 All 23 monthly bulletins - 368 pages \$46.00 _____

Corbin Catalog No. 26 - No Date
 Locks and Builders' Hardware
 Complete catalog - 512 pages \$61.45 _____
 164 selected pages \$20.50 _____
 97 knob design pages \$13.10 _____

P & F Corbin Catalog - 1905
 Entire Catalog - 1098 pages \$131.75 _____
 528 selected pages \$63.35 _____
 130 knob design pages \$16.25 _____

<u>P & F Corbin Supplement to 1905 Catalog</u>		
88 selected pages	\$11.90	_____
<u>Corbin Special Hardware</u>		
43 pages	\$ 6.45	_____
<u>Fontaine & Vaillant</u> - No Date		
French Hardware - Pages not in consecutive order		
Complete catalog - 148 pages	\$18.50	_____
78 selected pages	\$10.55	_____
29 knob design pages	\$ 4.35	_____
<u>P. E. Guerin, Inc.</u> - 1914		
Catalog No. 4		
Period Hardware - Pages not in consecutive order		
Complete catalog - 205 pages	\$25.65	_____
116 selected pages	\$14.50	_____
58 knob design pages	\$ 7.85	_____
<u>Hopkins & Dickinson Mfg. Co.</u> - October, 1879		
Locks, Builders' Hardware, & Cast Bronze & Brass Work		
Complete copy - 392 pages (Several pgs. missing)	\$49.00	_____
102 selected pages	\$12.75	_____
28 knob design pages	\$ 4.20	_____
<u>Lockwood History</u> - 1953		
Bulletin with the history of Lockwood going back to the Nashua Lock Co.		
Total 39 pages		
25 selected pages	\$ 3.75	_____
<u>Lockwood Manufacturing Co.</u> - 1914		
Complete catalog - 804 pages	\$96.50	_____
436 selected pages	\$54.50	_____
136 knob design pages	\$17.00	_____
<u>Mallory, Wheeler & Co.</u> - 1882		
332 total pages		
104 selected pages	\$13.00	_____
40 knob design pages	\$ 6.00	_____
<u>Maymore Brand Builders Hardware</u> - July 1912		
Catalog No 1C		
Includes 19 page price list w/illustrations		
Complete catalog - 101 pages	\$12.65	_____
27 selected pages	\$ 4.05	_____
<u>Nashua Lock Co.</u> - July 1872		
Entire catalog - 165 pages	\$20.60	_____
43 selected pages	\$ 6.45	_____
<u>A. G. Newman</u> - 1876		
Entire catalog - 146 pages	\$18.50	_____
76 selected pages	\$10.25	_____
<u>A. G. Newman</u> - c. late 1800's		
Number of pages unknown		
35 knob design pages	\$ 5.25	_____
<u>Norwalk Lock Co.</u> - 1890		
376 pages		
184 selected pages	\$23.00	_____
40 knob design pages	\$10.80	_____
<u>Penn Hardware Company</u> - c. 1907		
Complete catalog - 548 pages	\$65.75	_____
321 selected pages	\$40.15	_____
55 knob design pages	\$ 7.45	_____

<u>Phoenix Lock Works</u> - 1894		\$19.	_____
Complete catalog - 159 pages		\$ 6.	_____
44 selected pages			_____
<u>Reading Hardware Co.</u> - 1897			
Complete catalog - 690 pages		\$82.80	_____
398 selected pages		\$49.75	_____
25 knob design pages		\$ 3.75	_____
<u>Russell & Erwin</u> - Supplement to 1870			
3 copied pages		\$ 1.50	_____
<u>Russell & Erwin Mfg. Co.</u> - 1885			
6 copied pages		\$ 1.90	_____
<u>Russell & Erwin</u> - Vol. No. 2 - 1875			
With 1877 Supplement			
Total number of pages unknown			
38 knob design pages		\$ 5.70	_____
<u>Russell & Erwin Mfg. Co.</u> - Pratt & Co. Agents			
Fine Bronze Door Trimmings			
3 selected pages		\$ 1.50	_____
<u>Russell & Erwin Mfg. Co.</u> - 1883 Vol. X			
5 selected pages		\$ 1.70	_____
<u>Russell & Erwin Mfg. Co.</u>			
Export catalog			
9 selected pages		\$ 2.00	_____
<u>Russell & Erwin</u> - 1897			
280 pages			
94 selected pages (47 sheets)		\$ 7.05	_____
<u>Russwin Hardware - Schools of Design</u>			
No Date - Complete catalog - 70 pages			
36 sheets - (2 pages per sheet)		\$ 5.40	_____
<u>Russell & Erwin Mfg. Co.</u> - Vol. 10 - 1909			
Complete catalog - 1061 pages		\$127.30	_____
413 selected pages		\$51.65	_____
134 knob design pages		\$16.75	_____
<u>Russwin Catalog of Hardware</u> - Vol. 11 - 1920			
Complete copy - 482 pages		\$60.25	_____
155 selected pages		\$19.40	_____
134 knob design pages		\$16.75	_____
<u>Sargent's Artistic Hardware</u> - No Date			
c. turn of the century			
335 pages		\$41.90	_____
130 selected pages		\$16.25	_____
<u>Sargent's Locks & Hdw.</u> - 1926			
Complete catalog - 564 pages		\$67.70	_____
193 selected pages		\$24.15	_____
80 knob design pages		\$10.80	_____
<u>A. F. Shapleigh Hdw. Co.</u> - 1895			
308 pages			
96 selected pages		\$12.95	_____