

SARGENT'S
ARTISTIC HARDWARE.

SARGENT & COMPANY,

MAKERS OF FINE LOCKS AND ARTISTIC HARDWARE.

NEW YORK; AND NEW HAVEN, CONN. U. S. A.

Index.

B Design	1 to 4
Butts	3, 15, 19, 29, 35, 43, 131, 184, etc.
C Design, Scroll Pattern	5 to 11
C Design, Square "	13 to 16
C Design, Steeple "	17 to 20
CR Design	21 to 25
Cylinder Locks	146 to 163
Cylinder Lock Sets, Special Designs	1 to 124
Cylinder Lock Sets, on pages 62 to 75 of Blue Paper Supplement	
D Design	27 to 32
Door Knockers	133
Easy Spring Locks, Explanation	164, 165
Electric Switches	133
F Design	33 to 37
French Window Hurdles	183
French Window Locks	182
Front Door Handles	134 to 144
Front Door Locks	156 to 162, 174, 176
Front Door Lock Sets, Special Designs	1 to 124
Front Door Lock Sets, on pages 37 to 75 of Blue Paper Supplement	
G Design	39 to 45
H Design	126, 127
Hinge Plates	145
Hinge Plates, C Design	7
Hinge Plates, G "	42
Hinge Plates, J "	50
Hinge Plates, Scroll Pattern	110
Hinge Plates, V Design	114
Inside Door Locks	153 to 155, 166 to 173
Inside Door Lock Sets, Special Designs	1 to 124
Inside Door Lock Sets, on pages 1 to 27 of Blue Paper Supplement	
J Design	47 to 52
K Design	53 to 55
L Design	56, 57
M Design	59 to 63
N Design	65 to 70
Night Latches	146, 147, 152
Office Locks	153 to 155
Push Buttons	1 to 124, 133
R Design	71 to 76
RC Design	77 to 80
RD Design	129
RG Design	81 to 85
RK Design	87 to 91
RM Design	130 to 132
RN Design	93 to 96
RT Design	97 to 101
Scroll Patterns	103 to 110
Sliding Door Locks	178 to 181
Sliding Door Lock Sets, Special Designs	1 to 124
Sliding Door Lock Sets, on pages 28 to 36 of Blue Paper Supplement	
Special Designs	1 to 145
Store Door Handles	134 to 144
T Design	128
V Design	111 to 115
Vestibule Latches	157 to 163, 175, 177
W Design	117 to 119
Y Design	121 to 124

B Design.



No. 1892B, &c.



No. 1892B, &c.
On Swivel Spindle specially
4/16 or 5/8 inch as wanted.

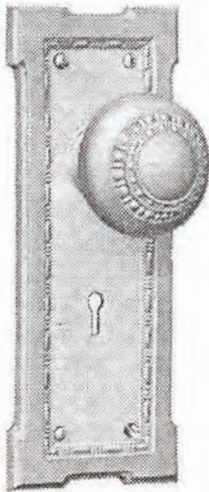
All packed with Screws to match.



No. 1897B, &c.

Numbers.	Inch.	Mortise Door Knobs.	BRONZE METAL.		
			Natural and M Finishes.	A B, C B L.R. P Finishes.	A S, C S L.S Finishes.
1892B	2 1/4	Straight Spindle, . . . per dozen.	\$53 90	\$57 20	\$75 60
1893B	2 1/4	Swivel " " " "	65 40	69 60	78 00
1894B	2 1/4 x 2 1/4	Straight " " " "	65 40	69 60	78 00
1895B	2 1/2 x 2 1/4	Swivel " " " "	67 20	72 00	80 40
1897B	2 1/2	" " " " "	69 60	73 80	82 20
Rose & Escutcheons Combined.					
For Inside Doors.					
885B	2 1/4 x 10 1/2	For 3 1/2 Inch Mortise Locks,	Per dozen.	Per dozen.	Per dozen.
886B	" " "	" 4 " " " "	\$25 20	\$28 50	\$37 80
887B	" " "	" 4 1/4 & 4 1/2 " " " "			
For Outside of Door.	For Inside of Door.	For Front, Vestibule and Office Doors.			
896B	894B	Size, 2 1/2 x 13 1/2 Inches.	Per dozen.	Per dozen.	Per dozen.
896 1/2 B	894 1/2 B	For 4 1/4 Inch Front Door Locks,	\$42 00	\$48 60	\$61 20
897B	895B	" Vestibule Latches to match,			
897 1/2 B	895 1/2 B	" 5 1/2 & 6 1/4 In. Front Door Locks,			
		" Vestibule Latches to match,			
		Cylinder.			
		Size, 2 1/2 x 13 1/2 Inches.			
7896B	7894B	For 5 1/2 In. Frt. Door & Office Locks,	42 00	48 00	61 20
7896 1/2 B	7894 1/2 B	" Vestibule Latches to match,			
7897B	7895B	" 7 1/2 Inch Front Door Locks,			
7897 1/2 B	7895 1/2 B	" Vestibule Latches to match,			

Notice that the Knobs and Escutcheons are priced separately.



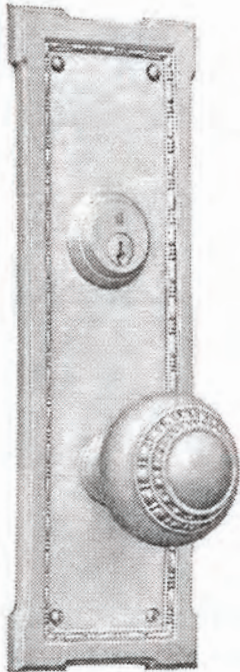
No. 1625CP, &c.



No. 1622CP, &c.
On Swivel Spindle specify
5-16 or 3-8 inch, as wanted.

C Design.—Square Pattern. (Colonial.)

All packed with Screws to match.



No. 7956CP, &c.



No. 914CP.



No. 950CP.

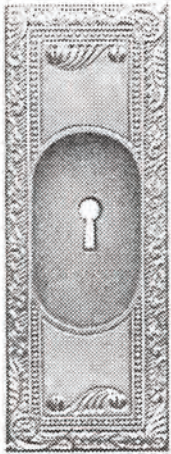
Numbers.	Inch.	Mortise Door Knobs.	BRONZE METAL.			B B (Blue Black) "Rustless" Iron Finish.
			Natural Finish.	A.B. C.B. D.B. O.B. Finishes.	A.S. G.S. L.S. Finishes.	
1622CP	2 1/4	Straight Spindle.	Per dozen.	Per dozen.	Per dozen.	Per dozen.
1623CP	2 1/4	Swivel " " " " " "	\$37 80	\$41 40	\$50 40	\$31 80
1624CP	2 1/2 x 2 1/4	Straight " " " " " "	49 20	43 20	52 80	33 60
1625CP	2 1/2 x 2 1/4	Swivel " " " " " "	40 20	43 20	52 80	33 60
1627CP	2 1/2	" " " " " "	42 00	45 60	54 60	36 00
			44 40	48 00	57 00	37 80
Rose & Escutcheons Combined.						
For Inside Doors.						
945CP	3 1/2 x 8	For 3 1/2 Inch Mortise Locks.	Per dozen.	Per dozen.	Per dozen.	Per dozen.
946CP	" " "	" 4 " " " "	\$42 00	\$46 20	\$58 80	\$31 80
947CP	" " "	" 4 1/2 & 4 1/2 " " " "				
948CP	" " "	" 5 " " " "				
For Outside of Door.	For Inside of Door.	For Front, Vestibule and Office Doors.	Per dozen.	Per dozen.	Per dozen.	Per dozen.
956CP	954CP	Size, 3 1/2 - 9 1/4 Inches.	\$52 80	\$57 00	\$69 60	\$42 00
956 1/2 CP	954 1/2 CP	For 4 3/4 Inch Front Door Locks,				
957CP	955CP	" Vestibule Latches to match,				
957 1/2 CP	955 1/2 CP	" 5 1/2 & 6 1/4 In. Frt. Door Locks,				
		" Vestibule Latches to match,				
		— Cylinder —				
7956CP	7954CP	Size, 3 1/2 x 9 1/4 Inches.	52 80	57 00	69 60	42 00
7956 1/2 CP	7954 1/2 CP	For 5 1/2 In. Frt. Door & Office Locks,				
		" Vestibule Latches to match,				
7950CP	7951CP	Size, 3 1/2 x 11 Inches.	58 80	64 20	78 60	48 60
7950 1/2 CP	7951 1/2 CP	For 5 1/2 In. Frt. Door & Office Locks,				
7952CP	7953CP	" Vestibule Latches to match,				
7952 1/2 CP	7953 1/2 CP	" 7 1/2 Inch Front Door Locks,				
		" Vestibule Latches to match,				
Numbers.	Inch.	Cup Escutcheons.	Per dozen.	Per dozen.	Per dozen.	Per dozen.
914CP	2 3/4 x 6	For Sliding Door Locks.	\$34 80	\$39 00	\$51 60	\$29 40
		Plate Escutcheons.	Per dozen.	Per dozen.	Per dozen.	Per dozen.
950CP	1 1/2 x 2 1/8	For all Door Locks.	\$7 50	\$8 40	\$16 20	\$8 30

Notice that the Knobs and Escutcheons are priced separately.

Highly Polished Brass finished at the same price as Natural Finish
Bronze Metal.

D Design.

All packed with Screws to match.



No. 883D, &c.



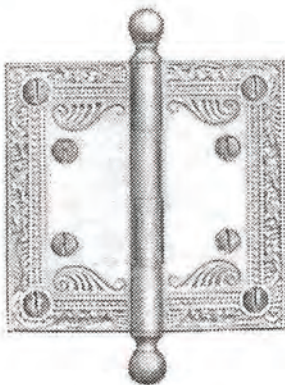
No. 1109D.



No. 9185D, Patented.



No. 9626D.



No. 1541D



No. 1307D.



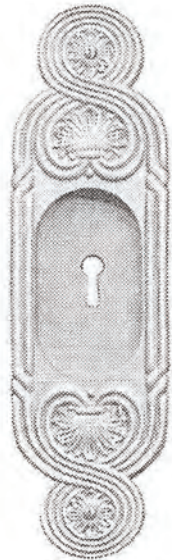
No. 1541D



No. 1307D.

Numbers.	Inch.	Cup Escutcheons.	BRONZE METAL			
			Natural and M Finishes.	AB, CB, DE LB, OE, F Finishes.	R, RA EB, RL Finishes.	AS, CS LS Finishes.
883D 884D	$2\frac{3}{8} \times 1\frac{1}{8}$ $2\frac{3}{8} \times 1\frac{1}{4}$	For Sliding Door Locks.	Per dozen. \$19 20 14 76	Per dozen. \$22 26 17 30	Per dozen. \$23 49 18 36	Per dozen. \$31 86 25 20
		Mortise Flush Bolts.				
1109D	$1\frac{1}{2} \times 5\frac{1}{4}$	12, 18, 24, 30, 36, 42, 48 in. Specify length wanted.	Per dozen. \$27 60	Per dozen. \$31 80	Per dozen. \$33 00	Per dozen. \$39 90
		Push Buttons.				
9185D	$2\frac{1}{2} \times 4\frac{1}{8}$	For Electric Bells, . . .	Per dozen. \$16 80	Per dozen. \$21 00	Per dozen. \$22 50	Per dozen. \$29 40
		Bell Pulls.				
9626D	$1\frac{7}{8} \times 3\frac{1}{4}$	Bell Pulls,	Per dozen. \$24 00	Per dozen. \$29 40	Per dozen. \$31 20	Per dozen. \$42 00
		Sash Lifts.				
836D 1883D	$1 \times 1\frac{1}{2}$ $1\frac{1}{2} \times 3$	Hook Sash Lifts, . . . Flush " "	Per dozen. \$2 40 5 20	Per dozen. \$3 00 6 25	Per dozen. \$3 40 6 70	Per dozen. \$4 20 8 35
		Loose Pin Butts.				
1541D	3×3 $3\frac{1}{2} \times 3\frac{1}{2}$ 4×4 $4\frac{1}{2} \times 4\frac{1}{2}$ 5×5 $5\frac{1}{2} \times 5\frac{1}{2}$	Loose Pin Butts, . . . " " " " " " " " " " " " " " " " " " " "	Per pair. \$2 40 2 70 3 15 4 05 4 80 5 75	Per pair. \$2 75 3 05 3 60 4 50 5 30 6 65	Per pair. \$2 90 3 25 3 85 4 90 5 60 7 20	Per pair. \$3 25 3 60 4 20 5 25 6 20 7 50
		Drawer Pulls.				
1307D	$1\frac{1}{4} \times 3\frac{1}{2}$	Drawer Pulls,	Per gross. \$54 00	Per gross. \$65 40	Per gross. \$69 60	Per gross. \$86 40

M Design. (Romanesque.)



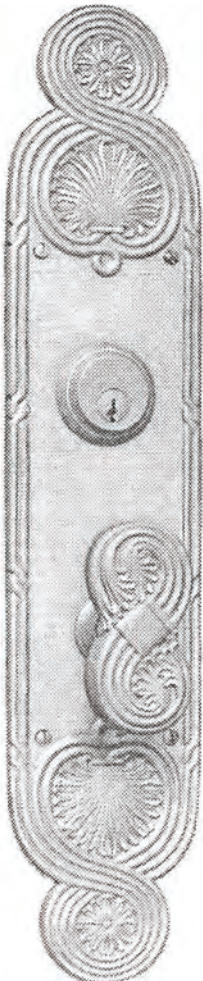
No. 944M.



Nos. 1916M and 1917M.
On Swivel Spindle specify
5-16 or 5-8 inch, as wanted.



No. 1942M, &c.
On Swivel Spindle specify
5-16 or 5-8 inch, as wanted.



No. 944M, &c.



No. 958M.



No. 968M, &c.

All packed with Screws to match.

Numbers.	Inch.	Mortise Door Knobs.	BRONZE METAL.	
			R. R. A. R. R. R. I. Finishes.	R. O. R. S. Finishes.
			Per dozen.	Per dozen.
1916M	3 1/2	Straight Spindle,	\$50 40	\$58 80
1917M	3 1/2	Swivel "	54 00	62 40
1942M	2 1/4	Straight Spindle,	33 00	42 00
1943M	2 1/4	Swivel "	37 20	45 60
1944M	2 1/2 x 2 1/4	Straight "	37 20	45 60
1945M	2 1/2 x 2 1/4	Swivel "	49 50	48 90
1947M	2 1/2	" " " " " " " " " " " "	43 80	52 20
Rose & Escutcheons Combined.				
For Inside Doors.				
			Per dozen.	Per dozen.
965M	2 5/8 x 10 3/4	For 3 1/2 Inch Mortise Locks, }	\$26 00	\$46 20
966M	" " "	" 4 " " " " " }		
967M	" " "	" 4 1/2 & 4 1/2 " " " " }		
968M	2 7/8 x 12 1/2	" 5 " " " " " }		
For Outside of Door.		For Inside of Door.		
For Front, Vestibule and Office Doors.				
			Per dozen.	Per dozen.
976M	974M	Size, 2 3/4 x 12 3/4 Inches.	\$29 96	\$51 60
976 1/2 M	974 1/2 M	For 4 1/2 Inch Front Door Locks, }		
		" Vestibule Latches to match.		
Cylinder.				
		Size, 2 3/4 x 12 3/4 Inches.	33 90	51 60
7976M	7974M	For 5 1/2 In. Frt. Door & Office Locks, }		
7976 1/2 M	7974 1/2 M	" Vestibule Latches to match.		
Size, 3 1/4 x 16 Inches.				
7970M	7971M	For 5 1/2 In. Frt. Door & Office Locks, }	51 60	69 60
7970 1/2 M	7971 1/2 M	" Vestibule Latches to match.		
7972M	7973M	" 7 1/2 Inch Front Door Locks, }		
7972 1/2 M	7973 1/2 M	" Vestibule Latches to match.		
Cup Escutcheons.				
			Per dozen.	Per dozen.
961M	2 1/2 x 9 1/2	For Sliding Door Locks,	\$26 90	\$46 20
Plate Escutcheons.				
			Per dozen.	Per dozen.
970M	2 1/2 x 2 1/2	For all Door Locks,	\$5 70	\$8 10

Notice that the Knobs and Escutcheons are priced separately.