



DESCRIPTIVE CATALOGUE
 AND
 PRICE-LIST
 OF
 HARDWARE,

Volume VIII

RUSSELL & ERWIN MANUFACTURING CO.,

43, 45, and 47 Chambers St.,
 NEW YORK.



19 North Fifth St.,
 PHILADELPHIA.

FACTORIES:

NEW BRITAIN, CONNECTICUT, U. S. A.

—1894.—



A
B

C

D
E
F
G

H

I
J
K
L
M

N
O
P

R
S

T.

U
V
W

World's Columbian Exposition.

1893.

A Medal and Diplomas of Highest Award in the several Classes in which we entered our products for competition were adjudged to us, as follows:

BUILDERS' HARDWARE.—DEPARTMENT H, GROUP 119.

Highest Award for Excellence of construction and workmanship, Artistic order of Designs and Extensive Variety.

Door Locks of Wrought Steel—for Lightness and Strength.

Door Locks, Cylinder—Security and Simplicity.

Door Checks and Springs, "Home"—Simplicity, Efficiency and Durability.

SCREWS AND BOLTS.—DEPARTMENT H, GROUP 119.

Highest Award for Screws and Bolts made from Iron, Steel, Brass and Bronze for Wood and Metal, with Patented Helicoid Ribs on the Shanks. This feature of the Helicoid Ribs on the Shanks is the most important improvement of recent years in Screws and Bolts.

Diamond Point Steel Screws.

Kuhn's Hinge Pins for Stove Doors.

HOUSE FURNISHING GOODS.—DEPARTMENT H, GROUP 119.

Highest Award for Excellence and Merit. Fire Irons and Stands, "Home" Meat Cutters and Stuffers. Hale's Meat Cutters and Stuffers.

CARPENTERS' TOOLS.—DEPARTMENT H, GROUP 119.

Highest Award for Excellence of Quality and Workmanship.

A
B
C
D
E
F
G
H
I
J
K
L
M
N
O
P
R
S
T
U
V
W

INDEX.

	Page.
A	
Adjusters, Blind,	350, 602
Adze Handles,	807
Adzes,	696
Agricultural Bolts, Reverse Helicoid,	491
Alarm Tills,	855
" Whistles,	817
Angular Bit Stocks,	692
Anvils and Vises,	783
" Eagle,	782
Auger Bit Handles,	676
" Bits, Cast Steel,	672
" " Cook's,	667
" " Handled,	667, 671
" " Jennings',	684
" " " Pattern,	668
" " No. 7,	669
" " Ship,	685
" Handles,	807
" " Patent,	679
Augers, Boring Machine, Cast Steel,	670
" " " Cook's,	666
" " " Expansive,	673
" " " No. 7,	669
" Cast Steel,	670
" Cooks',	666
" Gas Fitters',	670
" Hollow, Bonney's,	683
" " Douglass',	676
" " Goodell's,	683
" " Stearns',	683
" " Universal,	676
" Millwright,	666, 670
" No. 7,	669
" Post,	670
" " Hole,	694
" Rafting,	671
" Ring,	666, 671
" Ship,	685
Automatic Boring Tools,	693
Awl and Plyers combined,	827
" Hafts,	806
" Handles,	806
Awls,	805
" and Tools,	802 to 804
" Crispin's,	804
" Ice,	887
" Scratch,	805
Awning Hooks,	649, 653

	Page.
Awning Lines,	811
" Pulleys,	612, 613
Axe Handles,	807
" Wedges,	701
Axes,	696
" Boys',	696, 700
" Broad,	697
" Handled,	696, 700, 701
" Ice,	700
Axle Clips,	840
" Pulleys,	321 to 324
" Washers,	841

B	
	Page.
Babbitt-Metal,	856
Back Flaps,	273
" " Wrought,	576, 577
Bake Pans,	527, 528
Balances, Spring,	846 to 849
Balls, Ox,	440
Bar Staples,	652
Barn Door Hangers,	616
" " Hasp and Latch,	596
" " Latches,	596
" " Pulls,	596
" " Rail,	616, 617
" " Rollers,	617
" " Stays,	617
Barrel Bolts, Brass,	364
" " Bronze Plated,	364
" " Cast Iron,	597
" " Japanned,	364, 597
" " "Kahala" Bronze,	364
" " Real " "	364, 365
" " Wrought Iron,	598
Bars, Crow,	779
" Espagnolette,	389
" Shutter,	326 to 329
Base Knobs,	808
Beaters, Egg,	888
Bed Casters,	619
" Joints,	437
" Screws,	841
Beef Shavers, Enterprise,	881
Bell Carriages,	246
" Chains,	647
" Cranks,	247
" Levers,	243

A
B
C
D
E
F
G
H
I
J
K
L
M
N
O
P
R
S
T
U
V
W



	Page.
Bell Pulls,	236 to 241
“ Slides,	248
Bells, Alarm Gong,	898
“ Call,	900
“ Cow,	899
“ Globe Hand,	898
“ Gong House,	898
“ Hand,	898
“ Horse Car,	899
“ House,	244, 245, 248
“ “ Common,	898
“ Improved Lever Door,	242
“ Milkmen's and Auctioneers',	898
“ Sheep,	898
“ Tea,	899
“ Toy,	899
“ Trip Gong,	248
Bellows, Blacksmiths',	779
“ Hand,	779
“ Moulders',	779
Belt Awls,	827
“ Cutters,	827
“ Hooks,	827
“ Rivets,	828
“ Studs,	827
Bench Drills,	694
“ Hooks,	791
“ Screws,	791
“ Shears,	795
“ Vises,	782 to 789
Benders, Tire,	779
Bevels, Sliding T,	751
Bibbs, Plain,	842
Binding, Oil Cloth,	836
Bird-Cage Eyes,	634
“ “ Hooks,	415
Bit and Square Levels,	754
“ Gauges,	692
“ Stocks, Angular,	692
“ Stock Drills, Morse's,	684
Bits, Auger, Cast Steel,	672
“ “ Cook's,	667
“ “ in Wood Boxes,	668
“ “ Jennings',	684
“ “ “ Pattern,	668
“ “ No. 7,	669
“ “ Ship,	685
“ Car,	667, 668, 669, 672
“ Center,	687
“ Countersink,	687
“ Double Cut,	675, 686
“ Dowel,	667, 671
“ Expansive, Clark's,	683
“ “ Swan's,	673
“ German,	675, 686
“ Gimlet,	675
“ Handled Auger,	667, 671
“ Machine, Cook's,	666
“ “ Douglass',	672

Bits, Plug,	667
“ Pod,	686
“ Screw-Driver,	681
“ Sugar,	667
Blacksmiths' Bellows,	779
“ Drills,	694, 695
“ Hammers,	703, 705, 706
“ Pincers,	712
“ Sledges,	707
“ Tongs,	712
Blanks, Cabinet,	556, 557, 561
“ Trunk,	558, 561
Blind Adjusters,	350, 602
“ Fastenings, Mackrell's,	592
“ “ Plate,	591
“ “ Screw,	591
“ Hinges, Clark's,	590
“ “ Huffer's,	590
“ “ Rolled,	591
“ “ “ Center,	591
“ “ Wrought Steel,	591
“ Slat Tenons,	602
“ Staples,	826
Blocks, Tackle,	610
Board and Log Measures,	761, 762
Bobs, Plumb,	433, 748
Boilers, Tinned and Enameled	886
Bolt and Chain Door Fastener combined,	392
Bolts, Agricultural,	491
“ Barrel, Brass,	364
“ “ Bronze Plated,	364
“ “ Cast Iron,	597
“ “ Japanned,	364, 597
“ “ “Kahala” Bronze,	364
“ “ Real “	364, 365
“ “ Wrought Iron,	598
“ Bottom, “Kahala” Bronze,	367
“ Carriage,	838
“ Chain,	370, 371
“ Cremorne,	388
“ Cupboard, Brass,	374
“ “ Eccentric,	374
“ “ “Kahala” Bronze,	374
“ “ Real “	374
“ Eye,	655
“ Flat Brass,	375
“ Flat, Wrought Spring,	597
“ Flush Brass,	376, 377
“ “ “ Ship,	377
“ “ Bronze Plated,	378, 379
“ “ “Kahala” Bronze,	378, 379
“ “ Real “	378 to 380
“ “ Mortise, “Kahala” and Bronze Plated,	384, 385
“ “ “ Real Bronze,	381 to 387
“ Foot, Brass,	368
“ “ Bronze Plated,	368
“ “ Japanned,	368
“ “ “Kahala” Bronze,	368
“ “ Real “	368



	Page.		Page.
Bolts, Half Round, Brass,	375	Braces, Drill,	689, 691
" Latch, "Kahala" Bronze,	369	" Fray's,	688, 689
" Machine,	839	" Lightning,	693
" Mortise,	372, 373	" Spoffords'	688
" " Door,	117	Bracket Saw Blades,	735
" " " and Latch combined,	117, 118	" " Frames,	734, 735
" Plow,	839	Brackets, Flower Pot,	424, 425
" Ring,	655	" Hand Rail,	426
" Round Necked, Brass,	375	" Lamp,	425
" " " Wrought Iron,	600	" Roofing,	746
" " Straight, Brass,	375	" Shade,	639
" Sash,	601	" Shelf,	421 to 423
" Shaft,	491	Brads, Patent,	823, 824
" Ship,	375	" Wire,	497
" Shutter, Cast Iron,	597	Brass Ferrules,	828
" " Wrought Iron,	599, 600	" Hooks and Eyes,	627
" Sink,	492	" Kettles,	886
" Sleigh Shoe,	491, 839	" Padlocks,	469 to 474
" Spring, Flat,	597	" Screw Hooks,	625, 626, 628, 631 to 633
" " Wrought,	600	" , Sheet and Wire,	830, 831
" " " Necked,	600	Breaks, Peg,	901
" Square, Brass,	365	Breast Drills,	691
" " Bronze Plated,	365	Brick Trowels,	778
" " Cased, Brass,	366	Bright Wire Goods,	628 to 634
" " " "Kahala" Bronze,	366	Britannia Spoons,	896
" " " Necked, "Kahala" Bronze,	367	Broilers,	873
" " " Real Bronze,	366, 367	Brushes,	922 to 925
" " Cast Iron,	597	" File,	717
" " "Kahala" Bronze,	365	Buckets, Rubber Well,	835
" " Necked, Brass,	366	" Well,	874
" " " Cast Iron,	597	Bucks, Saw,	733
" " " Wrought Iron,	600	Bull Leads,	865
" " Wrought Iron,	599	" Rings,	868
" Stove,	492	" Snaps,	865
" Tire,	490, 839	Bung Borers,	679
" Tower, Cast Iron,	597	" Starts,	711
" Window Spring,	601	Burner Plyers,	770
" Wrought "	600	Burs, Copper,	828
" " " Neck,	600	" Iron,	829
Boot Jacks,	439	Bush Hooks,	917
Borax,	779	Butchers' Cleavers, and Choppers,	799, 877
Borers, Tap,	679	" Knives,	798 to 800
Boring Machines,	678	" Meat Cutters and Choppers,	503, 882
" " Augers,	666, 669, 670, 673	" Steels,	798 to 800
" Tools, Automatic,	693	Butter Tryers,	887
Bottom Bolts,	367	Button Hole Cutters,	795
Bow Pins,	868	Buttons, Commode,	644
Box Chisels,	433	" Cupboard,	351
" Hooks,	416	" " on Plates,	351
" Locks,	539 to 541	" Push,	232 to 235
" Openers,	709	" Stair,	858
" Plates, Letter,	428 to 432	Butts, Blind, Inside,	277, 575 to 577
" Scrapers,	801	" Fast Joint, Cast Iron,	572
Boxes, Mail,	857	" " " Real Bronze,	267
" Mitre,	748, 749	" " " Wrought,	574, 575, 577
" Twine,	439, 854, 855	" Loose " Cast Iron,	570, 572
Braces, Ball,	690	" " " Plain Bronze Plated,	253
" Barber's,	689, 690, 691	" " " "Florentine" Bronze,	253
" Corner,	654	" " " Ivory Black,	253

C

D
E
F
G

H

I

J

K

L

M

N

O

P

R

S

T

U

V

W



	Page.
Butts, Loose Joint, Polished Brass,	267
“ “ Pin, Cast Iron,	570, 571
“ “ “ Clark’s,	571
“ “ “ Ornamental Bronze Plated,	256 to 259
“ “ “ “ Ivory Black,	257, 258
“ “ “ “ “Kahala” Bronze,	255, 256
“ “ “ “ Real Bronze,	260 to 266
“ “ “ Plain Bronze Plated,	254
“ “ “ “ “Florentine” Bronze,	254
“ “ “ “ Ivory Black,	254
“ “ “ Wrought,	573 to 577
“ Parliament, Brass,	274
“ “ Bronze Plated,	274, 275
“ “ Cast Iron,	569
“ “ “Florentine” Bronze,	275
“ “ Real,	274
“ “ Wrought,	576
“ Shutter, Brass,	276, 277
“ “ Bronze Plated,	271
“ “ “Florentine” Bronze,	271
“ “ Real Bronze,	272
“ Spring, Acme,	588
“ “ American,	587
“ “ Bommer,	582, 583
“ “ Chicago,	584
“ “ Columbia,	588
“ “ Gem,	586
“ “ Oxford,	585
“ “ Surprise,	588
“ “ Union,	585
“ Wrought Brass,	276, 278
“ “ Steel, all kinds,	573 to 577

C

Cabin Door Hooks,	417
Cabinet Locks, &c.,	529 to 562
“ Keys and Blanks,	556, 557, 561
“ Scrapers,	729
Calipers,	766, to 768
Call Bells,	900
Can Openers,	890
Candlesticks,	441
Caps, Percussion,	921
Car Blind Bolts,	230
“ Blind Lifts and Pulls,	229
“ Latches,	224, 225
“ Lock Keys,	225
“ Locks,	215 to 223
“ Window Lifts,	229, 230
“ Window Locks,	230
Card Frames,	400
Cards, File,	717
“ Horse, Cotton and Wool,	862
“ Jim Crow, Mixing and Tow,	862
Carpenters’ Chalk,	813
“ Pencils,	816
“ Pincers,	712
“ Slicks,	657

	Page.
Carpet Nails,	497
“ Stretchers,	710
“ Tacks,	822, 824
Carriage Bolts,	838
“ Knobs,	862
Cartridges,	921
Carving Tools,	735
Cased Bolts,	366, 367
Caskets, Soldering,	770
Cast Iron Butts,	569 to 572
Casters, Bed,	619
“ Martin’s Patent,	620, 621
“ Payson’s,	622
“ Plate and Socket,	618
“ Store Truck,	619
Catches, Cupboard, Bronze Plated,	354, 357
“ “ “Kahala” Bronze,	353 to 357
“ “ Lever,	362
“ “ Real “	353 to 357
“ “ Rural,	355
“ “ Wrought Brass,	353
“ Elbow,	352
“ French Window,	358
“ Screen Door,	363
“ Transom,	359
Cattle Leaders,	868
“ Ties,	864
Caulking Mallets,	711
Ceiling Hooks,	412, 605, 606
Center Bits,	687
Centers, Sash,	346, 347
Chain Bolts,	370, 371
“ Door Fastenings,	390 to 392
“ “ “ and Bolt combined,	392
Chain, Bell,	647
“ Breast,	865
“ Cog-Wheel,	647
“ Coil,	832, 833
“ Halter,	832, 833, 865
“ Jack,	438, 439
“ Key,	836
“ Ladder,	439
“ Plumbers’	439
“ Post,	865
“ Pump,	835
“ Rein,	865
“ Safety,	439
“ Sash,	646
“ Stake,	834
“ Staking Out,	832
“ Steamboat,	647
“ Trace,	832, 834
“ Transom,	647
“ Well,	835
“ “ Bucket,	834
Chalk,	813
“ Line Reels,	808
“ Lines,	810, 811
Chandelier Hooks,	418 to 420





	Page.
Check Punches,	769
“ Springs,	247
Checks, Door,	279, 280
Cheese Knives, Enterprise,	881
Cherry Stoners,	881
Chest Handles,	402, 624
“ Hinges,	580
“ Locks,	539 to 547
Chest, Tool Acme,	677
China Nails and Discs,	636
Chisel Gauges,	755
“ Grinders,	692
“ Handles,	677, 806
Chisels, Box,	433
“ Cold,	653, 685
“ Corner,	658
“ Firmer,	659, 661 to 663
“ Ice,	887
“ Mortising Machine,	692
“ Socket Firmer,	658 to 660
“ “ Framing,	657, 658
“ Turning,	664
Choppers, Butchers',	799, 877
“ Meat, Enterprise, and Little Giant,	882
Chucks, Lathe,	692
Cigar Box Openers,	801
“ Knives,	801
Clamps, Cabinet,	792
“ Door,	791
“ Malleable,	792
“ Quilt Frame,	792
Clapboard Markers and Gauges,	755
Claws, Nail,	712
“ Tack,	710
Cleaners, Pot,	872
Cleats, Rope,	654
Cleavers, Butchers',	799, 877
Clippers, Horse,	797
“ Toilet,	798
Clips, Axle,	840
“ Hame,	835
“ Paper,	609
Cloth, Emery,	809
“ Sand,	809
“ Wire,	826
Clothes Lines,	811
“ Racks,	606
Clothes-Line Hooks,	414, 607
“ “ Pulleys,	614
“ “ Wire,	813
Coal Hods,	874
“ Shovels,	517, 902, 903
“ Tonges,	518
Coat and Hat Hooks,	404 to 411
“ “ “ Japanned and Coppered,	603 to 605
“ “ “ Wire,	606
Cockeyes,	840
Cocks,	842, 843
Coffee Mills,	878, 879

	Page.
Coffee Mills, Enterprise,	880
“ Roasters,	886
Cog-Wheel Chains,	647
Coil Chain,	832, 833
Cold Chisels,	653, 685
Collars, Dog,	866, 867
Combination Locks,	537, 546
Combs, Curry,	859 to 862
“ Mane,	862
Commode Buttons,	644
Compasses,	768
Conductors' Punches,	769
Coppers, Soldering,	770
Cord Irons, Sash,	321
Cord, Picture Wire,	636
“ Sash,	645
Cork Lined Faucets,	845
“ Squeezers,	439
Corkscrews,	891 to 893
Corn Hook and Knives,	913
“ Poppers,	872
Corner Braces,	654
“ Chisels,	658
“ Irons,	654
“ Trowels,	778
Cornice Hooks and Eyes,	628, 634
Cotters, Spring,	827
Cotton Cards,	862
“ Hooks,	416, 417
Countersinks,	681, 687
Covers, Dish,	874
Cow Bells,	899
“ Ties,	833, 834
Cracks, Nut,	887
Crank Handles and Knobs,	168, 169
Cranks and Rollers,	818
“ Bell,	247
Crate Hasps,	580
“ Hinges,	580
Crayons,	813
Crout Cutters,	875
Crow Bars,	779
Cup Hooks,	626
“ “ Brass Wire,	626
Cupboard Bolts,	374
“ Buttons,	351
“ Catches,	353 to 357, 362
“ Knobs,	164
“ Locks,	553 to 555
“ Turns,	360 to 362
Cups and Drop Handles,	171
“ “ T Handles,	170, 171
Curry Cards,	862
“ Combs,	859 to 861
“ “ Rubber,	862
Curtain Pins,	639
“ Rings,	641
Cutters, Button Hole,	795
“ Crout,	875

C

D

E

F

G

H

I

J

K

L

M

N

O

P

R

S

T

U

V

W





	Page.
Cutters, Glass,	890
" Lace,	827
" Leather and Rubber Belt,	827
" Meat,	501 to 503, 882
" " Butchers',	503
" Peg,	901
" Plug,	676
" Slaw,	875
" Tobacco,	875
" Vegetable,	875
" Washer,	774
" Wire,	771 to 774
Cutting Pincers,	712

D

Desk Hooks,	626
" Knobs,	644
" Locks,	539 to 547
Die Plates,	781
Discs,	636
Dish Covers,	874
Dividers,	767, 768
" Extension,	768
Dog Collars,	866, 867
" Muzzles,	868
Door Bell Levers,	243
" " Pulls,	236 to 241
" " Bells, Gong,	248
" " " "Home,"	244, 245
" " " Lever,	243
" " " on Carriages,	246
" " Bolts, Mortise,	372, 373
" " " Flush,	381 to 387
" " Buttons,	351
" " Catches, Screen,	363
" " Checks,	279, 280
" " Clamps,	791
" " Fastenings, Chain,	390 to 392
" " Fenders,	808
" " Handles,	288 to 290, 595, 596
" " " and Latches for Store Doors,	291 to 293
" " " " Locks " " "	294 to 313
" " Hangers,	318, 319, 615
" " Hooks, Cabin,	417
" " Keys,	200 to 213
" " Knobs,	151 to 163
" " Locks and Latches,	1 to 150
" " Pulls,	281 to 287, 320, 652
" " Rail, Sliding, Brass,	320
" " " Iron,	320
" " Rappers,	314, 315
" " Rings, Flush,	401
" " Sheaves,	316 to 319
" " Springs,	589
" " Stops, Wood,	808
Double Cut Bits,	675, 686
" " Gimlets,	675, 686
" " Pointed Tacks,	825

Double Stroke Gong Bells,	245
Douglass Manufacturing Co.'s Goods,	656 to 681
Dowel Sharpeners,	683
Drawer Handles, Flush,	402, 624
" Knobs,	330
" Locks,	529 to 538
" Pulls,	393 to 400
Drawers, Money,	855
Drawing Knives,	665
" " Adjustable,	664
Drill Braces,	689, 691
" Points,	693
" Stock and Points,	693
Drilling Machines,	694
Drills, Automatic,	693
" Bench,	694
" Bit Stock, Morse,	684
" Blacksmiths',	694, 695
" " Upright,	695
" Breast,	691
" Hand,	691, 692
" Ratchet,	694
" Straight Shank,	684
" Twist, Swan's,	671
" Wood Boring,	684
Drive Hooks,	625
" Punches,	770
Drops and Pins,	592
Dumb Waiter Pulleys,	324

E

Eccentric Bolts,	374
Edging or Border Knives,	916
Egg Beaters,	888
Elbow Catches,	352
Electric Push Buttons,	232 to 235
Emery,	809
" Cloth,	809
" Paper,	809
" Wheel Sharpeners,	818
Engineers' Sets and Fillers,	820, 821
Escapement Gongs,	248
Escutcheon Pins,	500
Escutcheons, Brass,	228
" Bronze Plated,	175, 181, 194
" Cabinet,	558, 561
" Concave,	38
" Gilt and Nickel Plated, Furniture,	644
" Ivory Black,	175, 179, 180
" Japanned, and Plated,	173, 228
" "Kahala" Bronze,	175
" Porcelain,	174
" Real Bronze,	175 to 178, 181 to 199, 228
Espagnolette Bars,	389
Even Balance Scales,	851
Extension Clothes Racks,	606
Eye Bolts,	655
Eyelet Sets and Punches,	769





Eyes, Bird-Cage,	Page.	634
“ Hammock,		607
“ Mosquito-Bar,		634
“ Screw,	628 to	630
“ “ Wrought,		655
“ Stair Rod,		634

F

Family Glue Pots,		886
“ Grindstones,		818
“ Scales,	847, 849 to	851
Fans, Fly,		872
Farriers' Nippers and Pincers,		712
Fasteners, Blind,		602
“ Eccentric,		333
“ Sash,	334 to	337
Fastenings, Bed,		437
“ Blind, Mackrell's,		592
“ “ Plate,		591
“ “ Screw,		591
“ Chain Door,	390 to	392
Faucets,	842 to	845
Felloe Plates,		840
Fenders, Door,		808
Ferrules, Wrought Brass,		828
Figures and Letters, Steel,		774
File Brushes,		717
“ Cards,		717
“ Handles,		806
“ Holders,		719
Files, Double Ender,	716, 717	
“ Nicholson's,	714 to	719
“ Paper,	608, 626	
“ Standard Sizes of,		717
Fillers, Sausage,		877
Finger Plates,	249 to	252
Fire Iron Sets, “ Home,”		517
“ “ Stands,	520 to	526
“ Irons,	506 to	516
Fish Lines,	810, 811	
Fixtures, Grindstone,		818
Flaps, Back,	273, 576, 577	
Flat Bolts,	375, 597	
Floor Hooks,		617
Floral Sets,		916
Flour Sifters,		873
Flower Pot Brackets,	424, 425	
Flush Bolts,	376 to	387
“ Cups and T Handles,	170, 171	
“ Handles, Drawer and Chest,	402, 624	
“ Pulls, for Barn Doors,		596
“ “ “ Sliding “		172
“ Rings,		401
“ Sash Lifts,	340 to	342
Fly Fans,		872
“ Traps,		872
Foot Bolts,		368
“ Scrapers,		623

Foot Warmers,	Page.	885
Forks, Hay and Manure, etc.,	910, 911	
“ Plated,	894, 895	
“ Spading, etc.,	910, 911	
“ Weeding,		916
Frames, Card,		400
“ Saw,		733
Freezers, Ice Cream,	877, 926	
French Window Catches,		358
Fruit Presses,		881
Fry Pans,		874
Furniture Escutcheons,		644
“ Handles,	642, 643	
“ Knobs,		636
Fuse, Safety,		917

G

Galvanized Butts,	574, 577	
“ Pails,		874
Garden Hoes,		914
“ Lines,		811
“ Rakes,		915
“ Sets,		916
“ Trowels,		915
Garment Hangers,		606
Garnet Paper,		809
Gas Plyers,		770
Gate Hinges,	593, 594	
“ Hooks and Eyes,	628, 634	
“ Latches,	595, 596, 652	
Gates, Molasses and Oil,	843, 844	
“ Self-Measuring,		844
“ Water,		845
Gauges, Bit,		692
“ Drawing Knife,		755
“ Jointer,		749
“ Marking, Mortising, etc.,	755, 756	
“ Saw,		737
Geese, Tailors',		883
Gimlet Bits,		675
Gimlets, Diamond,		686
“ Double Cut,	675, 686	
“ German,		675
“ Nail and Spike,		674
Glass Cutters,		890
Glasses, Level,		753
Glaziers' Points,		824
Glue, Liquid,		808
“ Pots,		886
Gong Bells,	248, 898	
Goodell Lathe,		735
Gouges, Firmer,	662, 663	
“ Socket Firmer,	660, 661	
“ Turning,		664
Grass Hooks,		917
“ Shears,		796
Griddles, Soapstone,		885
Grinders, Chisel,		692

D
E
F
G

H

I
J
K
L
M

N
O
P

R
S

T

U
V
W





Grindstone Fixtures,	818
Grindstones, Family,	818
" Mounted,	818
Grips, Nail,	712
Grub Hoes,	697
" Mattocks,	697
Gun Wads,	921

H

Hafts, Awl,	806
" Combination,	804
Halter Chain,	832, 833, 865
Halters,	864
Hame Clips and Staples,	835
" Rivets,	493
Hammer Handles,	807
Hammers, Brick,	707
" Cast Iron,	708
" Cigar Box,	708
" Drilling,	707
" Germond's,	703
" Heller Bros.,	706
" Masons',	707
" Maydole's,	704 to 706
" Napping,	707
" Ogden's,	702, 703
" Russell's,	703
" Saddlers',	708
" Shoe,	708
" Smith's,	703
" Smythe's,	703
" Steak,	709
" Tack,	708, 709
" Trimmers',	708
" Upholsterers',	708
" Warner & Noble's,	707
" Warner's,	707
Hammock Eyes,	607
" Hooks,	414, 607, 655
Hand Beaders,	746
" Bells,	898
" Drills,	691, 692
" Lamps,	820, 821
" Rail Brackets,	426
" " Screws,	841
" " Stays,	654
" Screws,	792
Handcuffs,	836
Handles, Adze,	807
" Auger,	807
" " Bit,	676
" " Patent,	679
" Awl,	806
" Axe,	807
" Carpet Stretcher,	710
" Chest,	402, 624
" Chisel,	677, 806
" Cup and Drop,	171

Handles, Cup and T,	170, 171
" Door,	288, 595
" File,	806
" Flush Chest,	402, 624
" " Drawer,	402, 624
" Furniture,	642, 643
" Hammer,	807
" Hatchet,	807
" Knob and Crank,	168, 169
" Lever,	170
" Lifting,	624
" Pick,	807
" Plane,	807
" Saw,	808
" Saw, Cross Cut,	721
" Screw-Driver,	806
" Sledge,	807
" Soldering Copper,	807
" Store Door,	288 to 290
" " " with Latch,	291 to 293
" " " " Lock,	294 to 313
" Surface,	403
" T, Brass and Real Bronze,	167
" Tool,	802 to 804, 806
" Tub,	403
Hangers, Barn Door,	319, 616
" Garment,	606
" House Door,	615
" Picture,	636
" Sliding Door,	318, 319
Harness Hooks,	413, 605
" Rings,	835
" Snaps, Covert's,	863, 864
" " German,	865
" " Judd's,	865
Hasps and Latches, Barn Door,	596
" " Staples,	648, 651
" Crate,	580
" Hinge,	580
Hat and Clothes Racks,	606
" " Coat Hooks,	404 to 411, 603 to 606
Hatchet Handles,	807
Hatchets, G. W. Crahan's,	700
" G. B. Germond's,	700
" Hunt's,	701
" Ice,	887
" M. C. Ogden's,	698, 699
" W. G. Smythe's,	701
" Solid Cast Steel,	701
" Underhill's,	699
Hay Fork Pulleys,	613
" Forks,	911
" Knives,	913
Hedge Shears,	795
Hinge Hasps,	580
" Nails,	650, 654
" Plates,	268 to 270
" Rivets,	650, 654
Hinges, Blind, Clark's,	590





	Page.
Hinges, Blind, Huffer's,	590
“ “ Rolled,	591
“ “ “ Center,	591
“ “ Wrought Steel,	591
“ Chest,	580
“ Crate,	580
“ Gate, all kinds,	593, 594
“ Hook,	581
“ “ and Eye,	580
“ Parliament,	569, 576
“ Plate, Fast and Loose Joint,	581
“ Pocket,	274
“ Rolled Plate,	580
“ “ Raised,	580
“ Screen,	278
“ Shutter, Bronze Plated,	271
“ “ “ Florentine ” Bronze,	271
“ “ Real Bronze,	272
“ “ Wrought Brass,	276, 277
“ Spring, Acme,	588
“ “ American,	587
“ “ “ Bommer,”	582, 583
“ “ Chicago,	584
“ “ Columbia,	588
“ “ Gem,	586
“ “ Oxford,	585
“ “ Surprise,	588
“ “ Union,	585
“ Strap and T,	578, 579
“ “ “ Corrugated,	579
“ Table,	574
“ Wash Tray,	574
Hitching Chains,	865
“ Hooks and Rings,	649, 653
Hods, Coal,	874
Hoe and Rake,	915
Hoes, Cotton,	914
“ Garden,	914
“ Grub,	697
“ Mortar, and Street,	914
“ Planters',	914
“ Scuffle,	916
Hog Ringers and Rings,	920
Holdes, File,	719
“ Key,	836
“ Sash,	601
“ Tool,	802 to 804
Hollow Augers, Bonney's,	683
“ “ Douglass',	676
“ “ Goodell's,	683
“ “ Stearns',	683
“ “ Universal,	676
“ Ware,	886
“Home” Door Bells,	244, 245
“ Door Checks,	279, 280
“ Fire Irons,	517
Hones, Razor,	917
“ Water,	917
Hoof Parers,	712

	Page.
Hook and Eye Hinges,	580
“ Hinges,	581
Hooks and Eyes, Brass,	627
“ “ Cornice,	628, 634
“ “ Gate,	628, 634
“ “ Malleable,	627
“ and Pins, Brass,	627
“ “ Rings, Hitching,	649, 653
“ “ Staples, Wrought,	648, 651
Hooks, Awning,	649, 653
“ Belt,	827
“ Bench,	791
“ Bird Cage or Hanging Basket,	415
“ Box and Cotton,	416, 417
“ Bush,	917
“ Cabin Door,	417
“ Ceiling,	412, 605, 606
“ Chandelier,	418 to 420
“ Clothes-Line or Hammock,	414, 607
“ Coat and Hat,	404 to 411
“ “ “ Japanned and Coppered,	603 to 605
“ “ “ Wire,	606
“ Corn,	913
“ Cup, Brass and Japanned,	626
“ “ “ Wire,	626
“ Desk,	626
“ Drive, Brass,	625
“ “ Wire,	625
“ Floor,	617
“ Grass,	917
“ Hammock,	414, 607, 655
“ Harness,	413, 605
“ Jamb,	519
“ Lamp,	625
“ Looking Glass, Brass,	626
“ Meat,	650, 652, 653
“ Picture or Moulding,	635, 636
“ Potato and Manure,	911
“ Pull Down,	345
“ Rafter,	617
“ S, Wire,	627
“ S, Wrought,	649, 651
“ School-House,	414
“ “ “ Triple,	605
“ Screw, Braced Wire,	634
“ “ Brass,	625, 626
“ “ Brass Wire,	625
“ “ Bright and Brass Wire,	628, 631 to 633
“ “ Coppered,	625
“ Sign,	653
“ Tassel,	640
“ Telegraph,	626
“ Wardrobe,	412, 603
“ Weeding,	916
“ Whiffletree,	840
Horse Brushes,	924
“ Car Bells,	899
“ Cards,	862
“ Clippers,	797

H

I

J

K

L

M

N

O

P

R

S

T

U

V

W





	Page.
Horse Hooks and Rings,	649, 653
“ Hopples,	862
“ Nails,	837
“ Rasps,	713, 715, 716
“ Shoeing Pincers,	712
“ Ties,	864
“ Tooth Rasps,	713, 715, 719
Hot-House Pulleys,	613
House Bells,	248, 898
“ “ on Carriages,	246

I

Ice Awls and Picks,	887
“ Axes,	700
“ Balances,	846
“ Chisels,	887
“ Cream Freezers,	877, 926
“ Hatchets,	887
“ Tongs,	888
Iron Padlocks,	442 to 468
“ Rivets,	829
“ Weights,	851
“ Wire,	830
Irons, Corner,	654
“ Leg,	836
“ Pinking,	901
“ Plane,	742
“ Polishing,	883 to 885
“ Sad,	883 to 885
“ “ Cold Handle,	884, 885
“ Sash Cord,	321
“ Self-Heating,	883
“ Soldering,	770
“ Tailors',	883
“ Toy Sad,	885
“ Waffle,	528

J

Jack Chain,	438, 439
“ Screws,	779
Jacks, Boot,	439
“ Wagon,	779
Jamb Hooks,	519
Jointer Gauges,	749

K

Key Chains and Rings,	836
Keys and Blanks, Cabinet and Trunk,	556 to 558, 561
Keys, Brass and Iron,	200 to 203, 210
“ Car Lock,	225
“ Padlock,	465
“ Shutter Lock,	427
“ Steel,	204 to 209, 211 to 213
Kettles, Brass,	886
“ Enameled,	886
“ Glue,	886

	Page.
Knives, Bread,	799, 800
“ Butcher, etc.,	798 to 800
“ Cheese, Enterprise,	881
“ Cigar,	801
“ Corn,	913
“ Drawing,	665
“ “ Adjustable,	664
“ Edging or Border,	916
“ Farriers',	800
“ Fruit,	895
“ Hay,	913
“ Hunting,	798
“ Kitchen,	799, 800
“ Mincing,	876, 877
“ Oyster,	917
“ Plated,	894, 895
“ Putty,	801
“ Saw,	729
“ Shoe,	801
“ Straw,	913
Knob Screws,	489
Knobs and Cranks,	168, 169
“ and Nuts,	165
“ Base,	808
“ Carriage,	862
“ Cupboard,	164
“ Desk,	644
“ Door, “ Aradh,”	153
“ “ Brass,	156, 159
“ “ Bronze Plated,	154
“ “ for Car Locks,	226, 227
“ “ Ivory Black,	153
“ “ “Kahala” Bronze,	154
“ “ Mineral,	152
“ “ Porcelain,	152
“ “ Real Bronze,	154 to 162
“ “ “ and Drop Handle,	163
“ Drawer,	330
“ Furniture,	636
“ Mortise Bolt or Half,	165
“ Picture,	637
“ Ship,	163
“ Shutter,	330 to 333
“ “ Wood,	637

L

Lace Cutters,	827
Ladder Sockets,	437
Ladles, Melting,	835
Lamp Brackets,	425
“ Hooks,	625
“ Trimmers,	795
Lamps, Hand,	820, 821
Lanterns, Police,	917
Lap Links,	649, 654
Latch Bolts,	369
Latches, All Brass, for Ship use,	149
“ Auto-Sliding Door,	595





	Page.
Latches, Barn Door,	596
“ “ “ and Hasp,	596
“ Car Door,	224, 225
“ Elevator,	123
“ Gate,	595, 596, 652
“ Horizontal Rim Knob,	32, 33
“ “ “ Night,	34 to 37
“ Mortise and Bolt combined,	117, 118
“ “ “ Pull combined, for Sliding Doors,	110
“ “ “ Knob,	119 to 121
“ “ “ for Vestibule Doors, Flat Fronts, 126, 129, 131, 133, 135, 138, 142, 145, 148.	
“ “ “ Knob, for Vestibule Doors, Rabbeted Fronts,	147
“ “ “ Night, Brass Fronts,	122
“ “ “ Sliding Door,	121
“ “ “ Store Door with Handle,	291 to 293
“ Sliding Door,	652
“ Thumb, Japanned,	288, 289, 595, 652
“ “ “ Kahala ” Bronze,	288, 289
“ Upright Rim Knob,	31
“ “ “ Night,	38
Lathe Chucks,	692
Lathe, Goodell,	735
Lead Pencils,	814 to 816
Leaders, Cattle,	868
Leads, Bull,	865
Leg Irons,	836
Lemon Squeezers,	889
Letter Box Plates,	428 to 432
“ Boxes,	857
Letters and Figures, Steel,	774
Level Glasses,	753
“ Sights,	752
Levels,	752 to 754
“ Iron,	752 to 754
“ Machinists',	753
“ Pocket,	753
Lever Bells,	242
“ Handles,	170
Levers for Improved Door Bells,	243
Lifters, Stove Cover,	903
“ Transom,	348 to 350
Lifting Handles,	624
Lifts, Sash and Lock, combined,	340
“ “ “ Window,	229, 338 to 343
“ Shutter,	427
Lightning Braces,	693
Lines, Chalk,	810, 811
“ Cotton Clothes,	811
“ Fish,	810, 811
“ Garden,	811
“ Masons',	810, 811
“ Wire Clothes,	813
Lining Nails,	825
Links, Lap, Repair or Open,	649, 654
Liquid Glue,	808
Locks, Brass for Ship use,	149, 150

	Page.
Locks, Cabinet, &c.,	529 to 562
“ “ extra changes and Master Key work,	562
“ “ numerical order,	559, 560
“ Chest, Box, and Desk,	539 to 547
“ Combination,	537, 546
“ Cupboard,	553 to 555
“ Drawer or Till,	529 to 538
“ Jones's Sash,	333
“ Mortise Dead, Horizontal,	111 to 113, 115
“ “ “ Master Keyed,	115, 116
“ “ “ Sliding Door,	116
“ “ “ Upright,	114
“ “ “ Knob, Cupboard,	52
“ “ “ French Window,	53
“ “ “ Front Doors, Flat Front, 124, 128, 130, 132, 134, 136, 140, 144, 148 A, 148 B	
“ “ “ Front Doors, Rabbeted Front,	146
“ “ “ Iron, Brass and Bronze Fronts, 64, 65, 69, to 77	
“ “ “ “ “ Front, 3 Bolts,	79, 80
“ “ “ “ Master-Keyed, for Hotels,	81 to 93
“ “ “ “ Rabbeted Front,	94 to 96
“ “ “ “ Refrigerator,	52
“ “ “ “ “ Russwin ” Cylinder,	78
“ “ “ “ “ Russwin, ” “ Master-Keyed, for Hotels,	92, 93
“ “ “ “ Sliding Door, Brass Front,	97
“ “ “ “ Wrought Steel, Steel, Brass, and Bronze Fronts, 54 to 63, 66 to 68	
“ “ “ with Flush Escutcheons, for Sliding Doors,	98 to 109
“ Pad,	442 to 480
“ “ Scandinavian or Jail,	475 to 480
“ Piano,	553
“ Plate,	569
“ Rim, Car Door,	215 to 223
“ “ “ Dead, Horizontal, for Closets, etc.,	29 to 31
“ “ “ “ “ Store Doors,	49, 50
“ “ “ “ Upright, “ “ “	42 to 48
“ “ “ “ “ Knob, Horizontal,	14 to 24
“ “ “ “ “ for Store Doors,	40, 41
“ “ “ “ “ Upright,	1 to 13, 25
“ “ “ “ “ for Front Doors, with Night Keys,	51
“ “ “ “ “ for Store Doors,	39
“ “ “ “ “ Master Keyed for Hotels, 26 to 28	
“ Store Door Shutter,	427
“ Trunk,	563 to 569
“ Wardrobe,	548 to 553
Looking-Glass Hooks,	626
“ Supporters,	639
Lumber Pencils,	815

M

Machine Bolts,	839
“ Screw Taps,	781
Machines, Boring,	678
“ Drilling,	694
“ Mortising,	692

I
J
K
L
M
N
O
P
R
S
T
U
V
W



	Page.
Mail Boxes,	857
Malleable Hooks and Eyes,	627
Mallets, Carpenters',	711
" Caulking,	711
" Tinner's',	711
Mandrels, Saw,	720
Mane Combs, Horn,	862
Market Scales,	850
Masons' Lines,	810, 811
Master-Keyed Locks,	26 to 28, 81 to 93, 115, 116
Match Safes,	440
Mattocks,	697
Mauls, Railroad,	707
Measuring Faucets,	844
" Tapes,	763 to 765
Meat Cutters,	501 to 503, 882
" " for Butcher's use,	503
" Hooks,	650, 652, 653
Melting Ladles,	835
Metal Polish,	901
Metal, Babbitt,	856
Mills, Coffee,	878, 879
" " "Enterprise,"	880
Mincing Knives,	876, 877
Mitre Boxes,	748, 749
" Planers,	749
" Squares,	751
Molasses Gates,	843, 844
Molding Hooks,	635, 636
Mole Traps,	870
Money Drawers,	855
Mortise Bolt and Latch combined,	117
" " Knobs,	165
" Bolts,	372, 373
" Flush Bolts,	381 to 387
Mortising Machine Chisels,	692
" Machines,	692
Mosquito-Bar Eyes,	634
Mouse Traps,	870 to 872
Muzzles, Dog,	868

N

Nail Claws,	712
" Grips,	712
" Pullers,	709
" Sets,	685
Nails, Brass Head,	641
" Carpet,	497
" Chair,	823
" China,	636
" Cigar Box,	823
" Clout,	823
" Finishing,	823
" Hinge,	650, 654
" Hob,	824
" Horse,	837
" Hungarian,	824
" Lining,	825

	Page.
Nails, Picture,	636 to 638
" Shoe,	824, 825
" Stay,	653
" Steel Wire,	494 to 499
" Trunk,	823
" Upholsterers',	641
" Wagon,	650
Necked Bolts, Brass,	366, 375, 600
" " Iron,	597, 600
" " "Kahala" Bronze,	367
Netting, Poultry,	826
Nippers, Cutting,	771
" Farriers',	712
" Hall's,	773
" Lindsay's,	772
" Police,	836
" Todd's,	774
Notice Frames,	231
" Plates,	231
Numerical List, Cabinet Locks and Blanks,	559 to 561
Nut Cracks,	887
" Picks,	887, 895
Nuts, Square and Hexagon,	840
" Tapped,	493

O

Odd Jobs,	754
Oil-Cloth Binding,	836
" Gates,	843, 844
" Stones,	812
Oilers,	819 to 821
Open Links,	654
Openers, Blind,	602
" Box (Chisel),	433
" Box,	709
" Can,	890
" Cigar Box,	801
Ox Balls,	440
" Bow Pins,	868
Oyster Knives,	917

P

Padlock Keys,	465
Padlocks, Brass,	469 to 474
" Iron,	442 to 468
" Scandinavian or Jail,	475 to 480
" Switch,	474
Pails, Galvanized,	874
Pans, Bake,	527, 528
" Fry,	874
" Sauce,	886
Paper Clips,	609
" Files,	608, 626
" Weights,	609
Paper, Emery,	809
" Garnet,	809
" Sand,	809
Parers, Hoof,	712



	Page.
Parliament Butts,	274, 275, 569, 576
Parlor Door Hangers,	615
Paste, Polishing,	901
Peg Awl Hafts,	806
“ Awls,	805
“ Breaks or Cutters,	901
Pen Racks,	609
Pencils, Carpenters',	816
“ Dixon's Lead,	814 to 816
“ “ Lumber,	815
Piano Locks,	553
Pick Handles,	807
“ Mattocks,	697
Picks, Ice,	887
“ Nut,	887, 895
“ Railroad,	697
Picture Cord Wire,	636
“ Hangers,	636
“ Hooks,	626, 635, 636
“ Knobs,	637
“ Nails,	636 to 638
Pincers, Carpenters',	712
“ Farriers',	712
“ Horse Shoeing,	712
Pinking Irons,	901
Pins, Curtain,	639
“ Escutcheon,	500
“ Ox Bow,	868
“ Shelf,	423
“ Transom,	347
Pipe Taps and Reamers,	781
Plane Handles,	807
“ Irons,	742
Planers, Mitre,	749
Planes, Bailey's,	743
“ Ensenore Bench,	738
“ Owasco, “	738
“ “ Miscellaneous,	739 to 742
“ Stanley's,	744 to 746
Plastering Trowels,	778
Plate Casters,	618
“ Hinges,	580, 581
“ Locks,	569
Plated Spoons and Forks,	894, 895
Plates, Die,	781
“ Felloe,	840
“ Finger,	249 to 252
“ for Cornice Hooks,	634
“ Hinge,	268 to 270
“ Letter-Box,	428 to 432
“ Push and Pull,	249 to 252
“ Sash,	344
“ Stubs, etc.,	427
“ Transom,	346, 347
Platform Scales,	852
Plow Bolts,	839
Plug Cutters,	676
Plumb Bobs,	433, 748
Plumbs and Levels,	752 to 754

	Page.
Plyers,	771
“ Belt,	827
“ Bernard's,	770, 772
“ Burner,	770
“ Button's,	774
“ Cronk's,	772
“ Cutting,	771
“ Gas,	770
“ Hall's,	773
“ Keyes',	772
“ Lindsay's,	772
“ Steel,	771
Pocket Hinges,	274
“ Levels,	753
Pod Bits,	686
Pointing Trowels,	778
Points, Drill,	693
“ Glaziers',	824
“ Trammel,	748
Pokers, Iron and Brass Head,	505
“ Polished Steel,	507 to 516
“ Wood Handle,	517
Police Lanterns,	917
“ Nippers,	836
Polish, Stove,	816
Polishing Paste,	901
Poppers, Corn,	872
Post Hitchers,	865
Post-Hole Augers,	694
Pot Cleaners,	872
Pots, Glue,	886
Poultry Netting,	826
Presses, Fruit, Drug, and Lard, Enterprise,	881
“ Tincture, Enterprise,	881
Primers,	921
Props, Sash,	333
Pruners,	796
Pruning Saws,	724
“ Shears,	796
Pull down Hooks,	345
Pullers, Nail,	709
“ Tack,	710
Pulleys, Awning,	612, 613
“ Axle,	321 to 324
“ Clothes Line,	614
“ Dumb Waiter,	324
“ Frame,	611
“ Hay Fork,	613
“ Hot House,	613
“ Rack,	640
“ Sash,	611
“ Screw,	325, 614
“ Side,	325
“ Tackle,	612, 613
“ Upright,	325
Pulls, Barn Door,	320, 596
“ Bell,	236 to 241
“ Door,	281 to 287, 652
“ Drawer,	393 to 400

N
O
P
R
S
T
U
V
W





	Page.
Pulls, Flush,	172
“ Sash,	342, 343
“ Slide,	248
Pump Chain,	835
Punches, Check,	769
“ Conductors’,	769
“ Drive,	770
“ Eyelet,	769
“ Prick,	770
“ Solid,	770
“ Spring,	769
“ Universal,	769
Push Buttons,	232 to 235
“ Plates,	249 to 252
Putty Knives,	801

R

Rack Pulleys,	640
Racking Cocks,	842
Racks, Clothes, Hat, and Towel,	606
“ Pen,	609
Rafter Hooks,	617
Rail, Barn Door,	616, 617
“ Sliding Door, Brass,	320
“ “ “ Iron,	320
“ “ “ Wrought Brass,	617
“ “ “ “ Iron,	617
Rakes, Cast Steel and Malleable,	915
Rappers, Door,	314, 315
Rasps, Horse,	713, 715, 716
“ “ Tooth,	713, 715, 719
Rat Traps,	869 to 872
Ratchet Drills,	694
“ Screw Drivers,	680
Razor Hones,	917
“ Strops,	918, 919
Razors,	793
Reamers,	681
Reels, Chalk Line,	808
Registers, Tally,	836
Repair Links,	649, 654
Rifles, Scythe,	813
Ring Bolts,	655
Ringers, Hog,	920
Rings and Staples,	649, 654
“ Bull,	868
“ Curtain,	641
“ Flush,	401
“ Harness,	835
“ Hitching,	649, 653
“ Hog,	920
“ Key,	836
“ Screw, Brass,	641
“ Swing,	655
“ Trap Door,	401, 649, 654
Rivet Sets,	770
Rivets, Clinch,	828
“ Coopers’,	829
“ Copper,	828

	Page.
Rivets, Coppered,	828
“ Hinge,	650, 654
“ Iron,	829
“ Wagon and Hame,	493
Roasters, Coffee,	886
Rods, Saw,	733
“ Stair,	858
“ Stove,	839
Rolled Plate Hinges,	580
“ Raised “	580
Roller Ends,	639
Rollers, Barn Door,	617
“ Sash,	320
“ Trunk,	320
Roofing Brackets,	746
Rope Cleats,	654
Rose and Escutcheon combined,	179 to 199
Rubber Curry Combs,	862
Rules, Board and Log,	761, 762
“ Boxwood,	757 to 760
“ Ivory,	760
“ Miscellaneous,	761
“ Steel,	763
“ Tinnners’,	436
“ with Metric Graduations,	759
Rural Cupboard Catches,	355

S

S Hooks, Wire,	627
S “ Wrought,	649, 651
Sad Irons,	883
“ “ Cold Handle,	884, 885
“ “ Toy,	885
“ “ Stands,	885
Safes, Match,	440
Safety Fuse,	917
Sand Paper and Cloth,	809
Sash Bolts,	601
“ Centers,	346, 347
“ Chain,	646
“ Cord,	645
“ Cord Irons,	321
“ Fasteners,	334 to 337
“ “ Eccentric,	333
“ Lifts,	338 to 343
“ “ and Lock combined,	340
“ Locks,	333
“ Plates,	344
“ Props,	333
“ Pulleys,	611
“ Pulls,	342, 343
“ Rollers,	320
“ Sockets,	345
“ Weights,	645
Sauce Pans,	886
Sausage Fillers,	877
“ Stuffers, “Enterprise,”	881
Saw Bucks,	733
“ Frames,	733



	Page.
Saw Gauges,	737
“ Handles,	808
“ “ Cross Cut,	721
“ Knives,	729
“ Mandrels,	720
“ Pads,	732
“ Rods,	733
“ Screws,	733
“ Sets,	736, 737
“ Vises,	789 to 791
Saws, Back,	728
“ Bracket,	734, 735
“ Buck,	730, 731
“ Butcher,	729
“ Circular,	720
“ Compass,	728
“ Cross Cut,	722
“ “ One Man,	723
“ Felloe,	732
“ Framed Wood,	730, 731
“ Hack,	732, 733
“ Hand, Panel, and Rip,	725 to 728
“ Ice,	724
“ Jewelers',	735
“ Key-Hole,	732
“ Kitchen,	729
“ Nest of,	732
“ Pit,	723
“ Pruning,	724
“ Scroll and Bracket,	734, 735
“ Table,	724
“ Turning,	732
“ “ and Frames,	732, 735
“ Wood,	731
“ “ Framed,	730, 731
Scale Beams,	853
Scales,	849 to 852
Scandinavian Padlocks,	475 to 480
School-House Hooks,	414, 605
Scissors,	794, 795
Scoops, Iron and Steel,	906, 908, 909
Scrapers, Box,	801
“ Cabinet,	729
“ Foot,	623
“ Ship,	801
Scratch Awls,	805
Screen Door Catches,	363
“ “ Hinges,	588
“ Hinges,	278
Screw Driver Bits,	681
“ “ Handles,	806
“ Drivers, Douglass',	680, 681
“ “ Fray's,	682
“ “ Lightning,	693
“ “ Ratchet,	680
“ “ Spiral,	682
“ Eyes,	628 to 630, 634
“ “ Wrought,	655
“ Hooks, Braced Wire,	634

	Page.
Screw Hooks, Brass and Brass Wire, 625, 626, 628, 631 to 633	625, 626, 628, 631 to 633
“ “ Bright Wire,	628, 631 to 633
“ Pulleys, Brass,	325
“ “ Iron,	325, 614
“ Rings,	641
“ Supports,	638, 639
Screws,	481 to 489
“ Bed,	841
“ Bench,	791
“ Diamond Point,	487
“ Hand,	792
“ “ Rail,	841
“ Helicoid,	487
“ Iron and Brass,	484
“ Jack,	779
“ Machine,	488, 489
“ Nickel Plated,	486
“ Plated and Bronzed,	485
“ Saw,	733
“ Shutter,	427
“ Side Knob,	489
Scribes, Timber,	805
Scuffle Hoes,	916
Scythe Rifles,	813
“ Snaths,	912
“ Stones,	813
Scythes,	912
Sets, Fire Iron,	506 to 517
“ Garden Floral,	916
“ Nail,	685
“ Rivet,	770
“ Saw,	736, 737
Shade Brackets,	639
“ Roller Ends,	639
Shaft Bolts, Reverse Helicoid,	491
Sharpeners, Dowel,	683
“ Emery Wheel,	818
Shavers, Smoked Beef,	881
Shaves, Spoke,	747
“ Tobacco,	875
Shears, and Scissors,	794, 795
“ Bench,	795
“ Grass,	796
“ Hedge,	795
“ Pruning,	796
“ Sardine,	890
“ Sheep,	796
“ Tailors',	794
“ Tinnners',	795
Sheaves, Barn Door,	319
“ Car “	319
“ Door,	316 to 319
“ for Blocks,	610
“ Hatfield Pattern,	318, 319
“ Philadelphia Pattern, Hanging,	318
“ “Russell's” Anti-Friction Door,	317
“ “ “ Hanging,	318
“ “ “ School-House,	317
“ Shutter,	316

R
S

T

U
V
W

	Page.		Page.
Sheep Shears,	796	Solid Punches,	770
Sheet Brass,	830	Spades and Shovels,	904 to 909
Shelf Brackets,	421, 422, 423	Spiders, Steel,	874
" Pins,	423	Spindles, Knob,	163
Shells, Shot,	921	Spoke Shaves,	747
Ship Augers and Bits,	685	" Trimmers,	676, 683
" Bolts,	375	Spoons, Basting,	896
" Scrapers,	801	" Britannia,	896
Shoe Finders' List,	824, 825	" German Silver,	896
" Knives,	801	" Iron,	896
Shot Shells,	921	" Plated,	894
Shovels and Spades, Iron and Steel,	904 to 909	Spring Balances,	846 to 849
" " Tongs, Iron and Brass Head,	504, 505	" Cotters,	827
" " " "Kahala" Bronze,	506	" Hinges,	582 to 588
" " " Polished Brass,	516	" Punches,	769
" " " " Steel,	507 to 515	Springs, Check,	247
" Stove or Coal,	517, 902, 903	" Door,	589
Shutter Bars,	326 to 329	" Window,	333, 601
" Bolts,	597, 599, 600	Square Bolts, Brass,	365
" Butts,	271, 272	" " Iron,	597, 599
" Knobs,	330 to 333	" " "Kahala" Bronze, and Bronze Plated,	365
" " Wood,	637	" " Necked, Brass,	366
" Lifts,	427	" " " Iron,	597, 600
" Locks,	427	" Cased Bolts, Brass and Real Bronze,	366, 367
" Screws,	427	" " " "Kahala" Bronze, and Bronze	
" Sheaves,	316	Plated,	366
" Workers,	602	" " " Necked, "Kahala" Bronze,	367
Side Pulleys,	325	Squares, Iron and Steel,	434, 435
Sieves,	873	" Mitre,	751
Sifters, Flour,	873	" Try,	750, 751
Sights, Level,	752	Squeezers, Cork,	439
Sign Hooks,	653	" Lemon,	889
Sink Bolts,	492	Stair Buttons,	858
Slaw Cutters,	875	" Rod Eyes,	634
Sledge Handles,	807	" Rods,	858
Sledges, Blacksmith,	707	Stake Chains,	834
" Stone,	707	Stands, Fire Iron,	520 to 526
Sleigh Shoe Bolts,	839	" Sad Iron,	885
" " " Reverse Helicoid,	491	Staples, Bar,	652
Slicers, Vegetable,	881	" Barrel,	825
Slicks, Carpenters',	657	" Bed Spring,	826
Slides, Bell,	248	" Blind,	826
Sliding Door Latches,	110, 121, 652	" Box,	825
" " Locks,	97, 98 to 109	" Clinch,	825
" " Pulls,	172, 320	" Hame,	835
" " Rail Brass and Iron,	320	" Poultry Netting,	826
" " " Wrought,	617	" Spring,	825
" " Sheaves,	316 to 319	" Wagon Bow,	649, 654
" T Bevels,	751	" Wrought,	648, 651
Snaps, Bull,	865	Stay Nails,	653
" Harness,	863 to 865	Stays, Barn Door,	617
Snaths, Scythe,	912	" Hand Rail,	654
Soapstone Foot Warmers and Griddles,	885	Steak Hammers,	709
Socket Casters,	618	Steamboat Chains,	647
Sockets, Ladder,	437	Steels, Butchers',	798 to 800
" Sash,	345	" Kitchen,	800
Soldering Caskets,	770	Steelyards,	853
" Copper Handles,	807	Stocks and Dies,	780, 781
" Coppers,	770	Stone, Arkansas,	812

	Page.
Stone, Hindostan,	812
“ Sand,	812
“ Scythe,	813
“ Washita,	812
Stoners, Cherry,	881
Stops, Door, Wood,	808
Store Door Handles,	288 to 290
“ “ “ with Latch,	291 to 293
“ “ “ “ Lock,	294 to 313
“ Truck Casters,	619
Stove Bolts,	492
“ Brushes,	925
“ Cover-Lifters,	903
“ Polish,	816
“ Rods,	839
“ Shovels,	902, 903
“ Trucks,	621
Strap and T Hinges,	578, 579
Straw Knives,	913
Stretchers, Carpet,	710
Strikes, Lock,	214
Strops, Razor,	918, 919
Stubs and Plates,	427
Studs, Belt,	827
Stuffers, Sausage,	877, 881
Supports, Looking-Glass,	639
“ Screw,	638, 639
Surface Handles,	403
Swing Rings,	655
Switch Padlocks,	474
Swivel Spindles,	163

T

T Bevels,	751
T Handles,	167
Tackle Blocks,	610
“ Pulleys,	612, 613
Tack Claws,	710
“ Hammers,	708, 709
“ Pullers,	710
Tacks, Brads, etc.,	822 to 825
“ Double Pointed,	825
Tailors' Irons,	883
“ Shears,	794
Tally Registers,	836
Tap Borers,	679
Tapes, Measuring,	763 to 765
Taps, Machine Screw,	781
“ Pipe,	781
“ Taper and Plug,	781
Tassel Hooks,	640
Telegraph Hooks,	626
Tenons, Blind Slat,	602
Thermometers,	897
Thumb Latches, Japanned,	595, 652
“ Pieces and Roses,	166

	Page.
Ties, Cattle,	864
“ Cow,	833, 834
“ Horse,	864
Till Locks,	529, 530
Tiller and Boxes for Pit Saws,	723
Tills, Alarm Money,	855
Timber Scribes,	805
Tincture Presses,	881
Tinsmiths' Mallets,	711
“ Punches,	770
“ Shears,	795
“ Steel Rules,	436
Tire Benders,	779
“ Bolts,	490, 839
Toasters,	873
Tobacco Cutters,	875
“ Shaves,	875
Toilet Clippers,	798
Tongs, Blacksmith,	712
“ Coal,	518
“ Ice,	888
“ Iron and Brass Head,	504, 505
Tool Chests, Acme,	677
“ Holders,	802 to 804
Tools, Automatic Boring,	693
“ Brad-awl, etc.,	802 to 805
“ Carving,	735
Towel Racks,	606
Tower Bolts,	597
Trace Chains,	832, 834
Tracing Wheels,	901
Trammel Points,	748
Transom Catches,	359
“ Chains,	647
“ Lifters,	348 to 350
“ Pins,	347
“ Plates,	346, 347
Trap Door Rings and Staples,	649, 654
“ “ “ Flush,	401
Traps, Fly,	872
“ Mole,	870
“ Mouse,	870 to 872
“ Rat,	869 to 872
“ Steel,	869, 870
Trimmer, Lamp,	795
“ Spoke,	676, 683
Trowels, Brick,	778
“ Corner,	778
“ Garden,	915
“ Plastering,	778
“ Pointing,	778
Truck Casters,	619
Trucks, Stove,	621
Trunk Blanks and Keys,	558, 561
“ Locks,	563 to 569
“ Nails,	823
“ Rollers,	320
Try Squares,	750, 751
Tryers, Butter and Cheese,	887

	Page.
Turnbuckles, Cast Iron,	592
" for French Windows,	121
" Wrought Iron,	592
Turns, Cupboard,	360 to 362
Twine Boxes,	439, 854, 855
Twist Drills for Wood,	671

U

Upholsterers' Hammers,	708
" Nails,	641
Upright Pulleys,	325

V

Vegetable Cutters,	875
" Slicers, Enterprise,	881
Vises,	782 to 789
" Hand,	786, 789
" Saw-Filers',	789 to 791

W

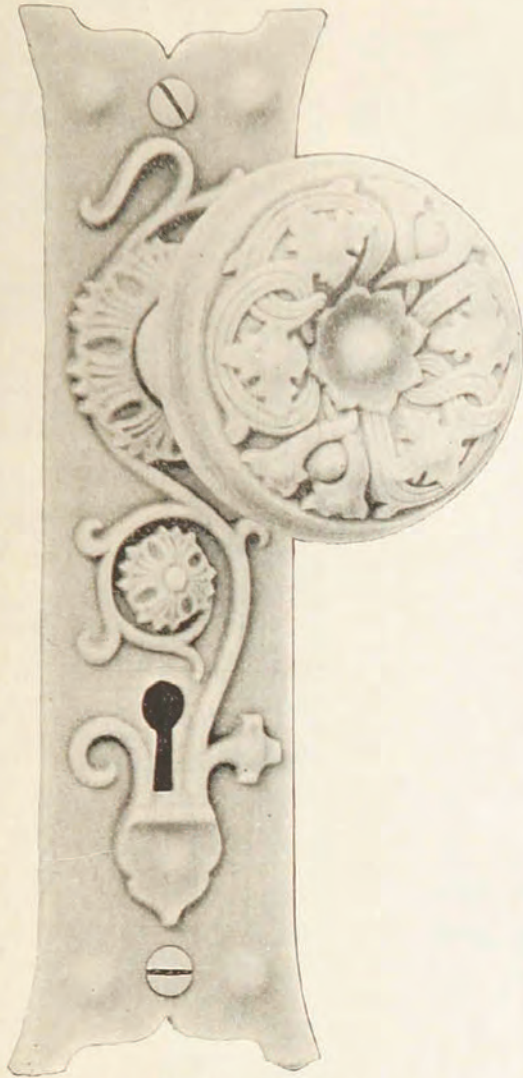
Wads, Gun,	921
Waffle Irons,	528
Wagon Bow Staples,	649, 654
" Jacks,	779
" Nails,	650
" Rivets,	493
Wardrobe Hooks,	412, 603
" Locks,	548 to 553
Warmers, Foot,	885
Wash Tray Hinges,	574
Washer Cutters,	774
Washers, Axle,	841
" Iron,	840
Water Gates,	845
Weaners,	917
Wedges, Axe,	701
Weeding Hooks and Forks,	916
Weights, Iron,	851
" Paper,	609

	Page.
Weights, Sash,	645
Well Bucket Chain,	834
" Buckets, Galvanized,	874
" " Rubber,	835
" Chain,	835
" Wheels,	614
Wheelheads,	917
Wheels, Knife Sharpener,	818
" Tracing,	901
Whiffletree Hooks,	840
Whistles, Alarm,	817
Window Pulleys,	611
" Screen Cloth,	826
" Spring Bolt Sockets,	601
" " Bolts,	601
" Springs,	333, 601
Wire Brads,	497
" Carpet Nails,	497
" Cloth,	826
" Clothes Lines,	813
" Coat and Hat Hooks,	606
" Cutters,	771 to 774
" Drive Hooks,	625
" Nails, all kinds,	494 to 499
" Netting,	826
" Picture Cord,	636
" S Hooks,	627
Wire, Annealed on Spools,	831
" Brass and Copper,	830, 831
" Hair,	831
" Iron and Steel,	830
Wood Saw Blades,	731
" Saws,	730, 731
Wool Cards,	862
Workers, Shutter,	602
Wrenches,	775 to 777
Wrought Brass Butts,	276 to 278
" Iron Goods,	648 to 655
" Steel Butts,	573 to 577



WROUGHT STEEL MORTISE KNOB LOCKS.

(ILLUSTRATIONS THREE-QUARTER SIZE.)



Knob No. 6042.
Escutcheon No. 6148½.



Knob No. 6043.
Escutcheon No. 6248½.

Packed with Furniture complete.

No. of Lock.	DESCRIPTION OF FURNITURE.	Per Dozen Sets.
1724	Ivory Black Knobs, No. 6042 ; Ivory Black Escutcheons, No. 6148½,	
1724	“ “ “ “ 6043 ; “ “ “ “ 6248½,	
1750	“ “ “ “ 6042 ; “ “ “ “ 6148½,	
1750	“ “ “ “ 6043 ; “ “ “ “ 6248½,	
1751	“ “ “ “ 6042 ; “ “ “ “ 6148½,	
1751	“ “ “ “ 6043 ; “ “ “ “ 6248½,	
1754	“ “ “ “ 6042 ; “ “ “ “ 6148½,	
1754	“ “ “ “ 6043 ; “ “ “ “ 6248½,	

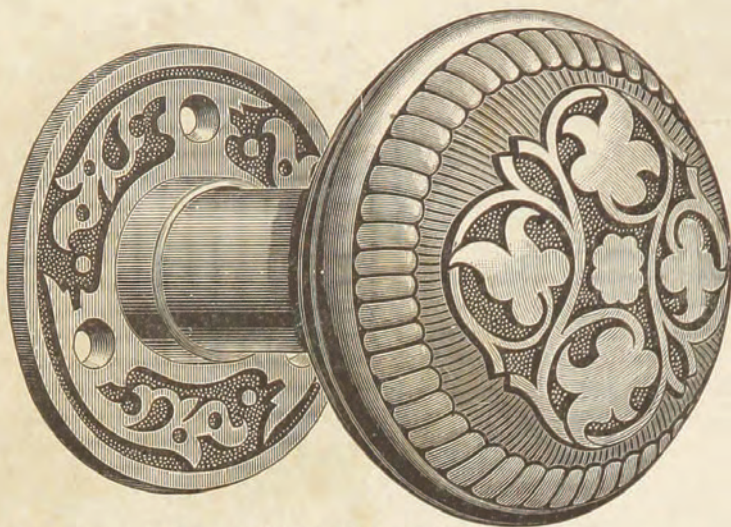
Quarter dozen in a box ; six dozen in a case.

For Description of Locks, see page 54.

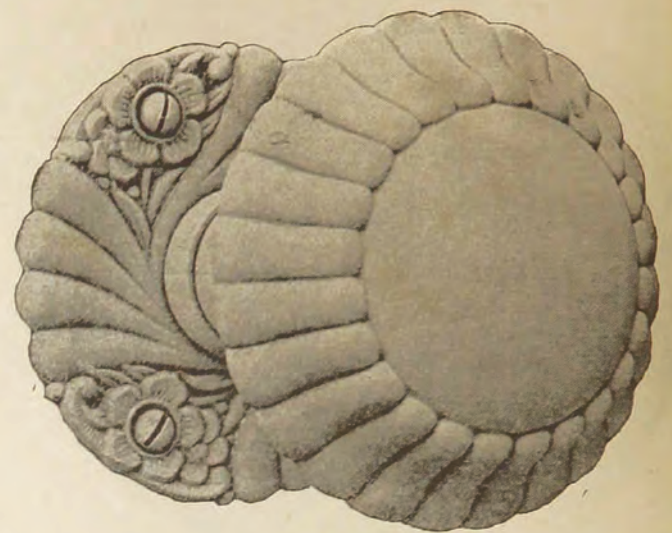




EMBOSSED DOOR KNOBS.



Nos. 985, 7985 and 8985.



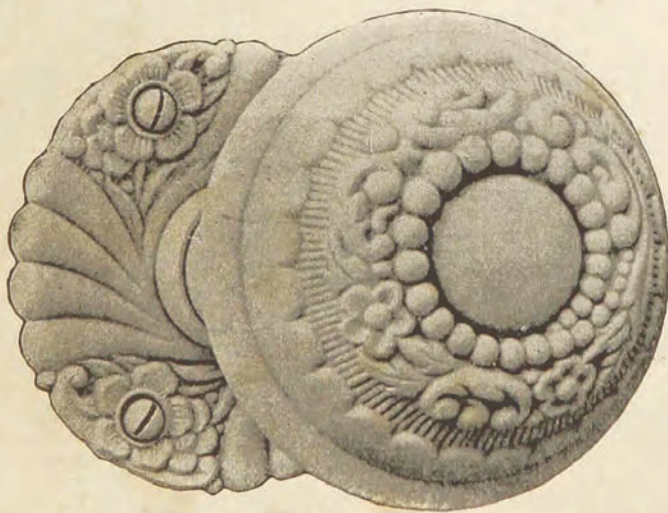
No. 685.

WITH ROUND ROSE.

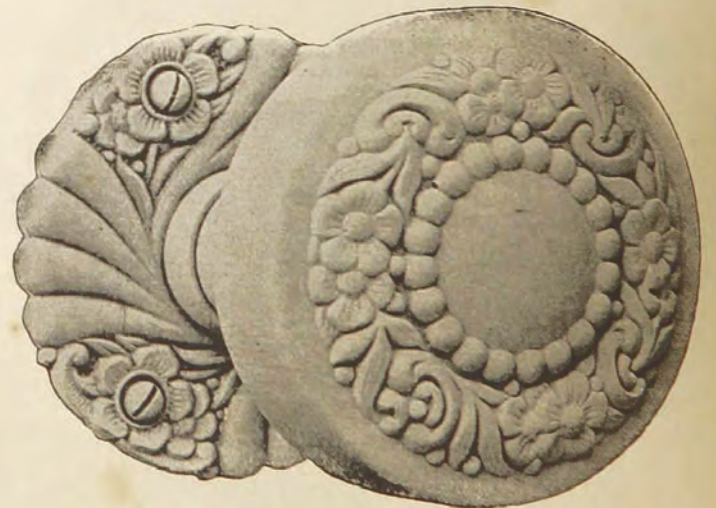
On 5-16 inch Plain Spindles.

No.	Diameter of Knob.		Per Dozen Pairs.	No.	Diameter of Knob.		Per Dozen Pairs.
985	2¼ inch,	Real Bronze,		685	2¼ inch,	Real Bronze,	
7985	2¼ " "	Bronze Plated,					
8985	2¼ " "	"Kahala" Bronze,					

Half dozen pairs in a box.



No. 687.



No. 639.

WITH ROUND ROSE.

On 5-16 inch Plain Spindles.

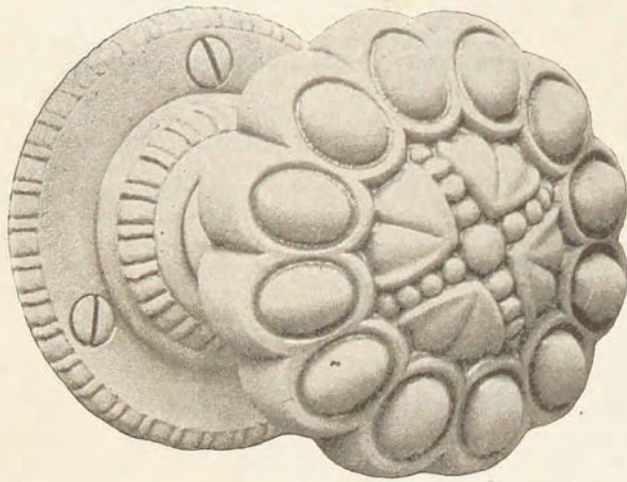
No.	Diameter of Knob.		Per Dozen Pairs.	No.	Diameter of Knob.		Per Dozen Pairs.
687	2¼ inch,	Real Bronze,		639	2¼ inch,	Real Bronze,	

Half dozen pairs in a box.

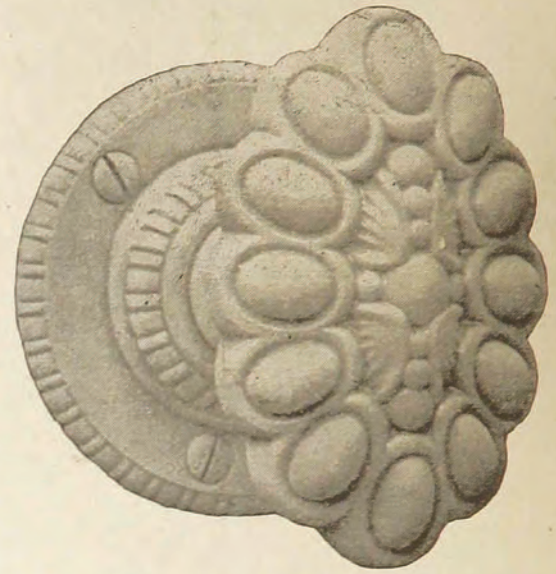




REAL BRONZE DOOR KNOBS.



No. 761.



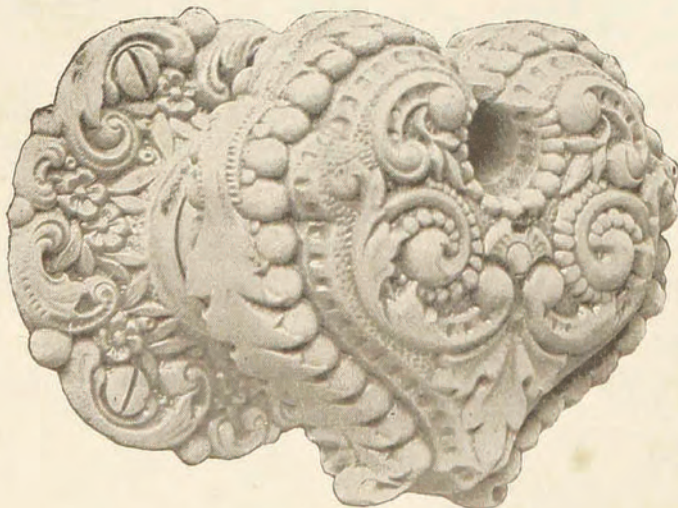
Nos. 765 and 766.

RENAISSANCE DESIGN.

On 5-16 inch Spindles.

No.	Diameter of Knob.	Per Dozen Pairs.	No.	Size of Knob.	OVAL.	Per Dozen Pairs.
761	2¼ inch,	With Round Rose,	765	2½ inch,	For Inside Doors,	
			766	3 "	" Outside "	

Quarter dozen pairs in a box.



No. 661.

No.	Diameter of Knob.	Per Dozen Pairs.
661	2½ inch,	With Round Rose,

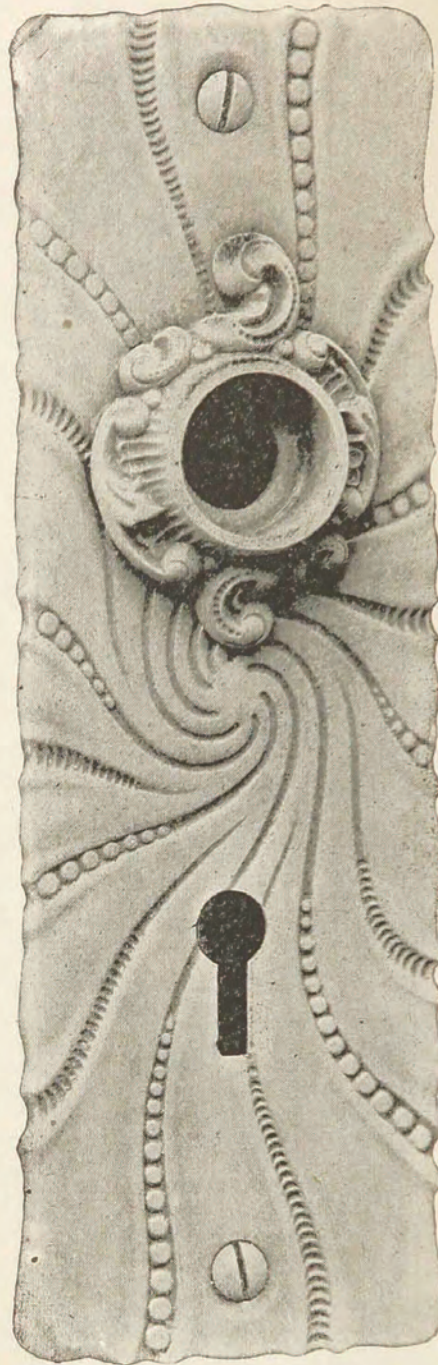
Quarter dozen pairs in a box.

For Rose and Escutcheons combined to match above Knobs, see pages 189 and 192.





ROSE AND ESCUTCHEON COMBINED.



No. 677 $\frac{1}{8}$.
REAL BRONZE.

No.	Size.		Per Dozen.
670 $\frac{1}{2}$	9 × 2 $\frac{1}{2}$ inch,	For Locks No. R 0120,	
671	9 × 2 $\frac{1}{2}$ "	" " " R 0101,	
671 $\frac{1}{2}$	8 × 2 $\frac{1}{4}$ "	" " 4 $\frac{3}{4}$ inch Front Door Mortise, all Nos.,	
672 $\frac{1}{2}$	6 $\frac{1}{4}$ × 2 $\frac{3}{8}$ "	" " 3 $\frac{1}{2}$ " Vestibule	
673 $\frac{1}{2}$	8 × 2 $\frac{1}{4}$ "	" " No. R 0174, R 00174, R 1174, R 01174,	
674	12 × 3 $\frac{1}{2}$ "	" " " R 0139,	
675	12 × 3 $\frac{1}{2}$ "	" " " R 0138, R 0138 $\frac{1}{2}$,	
676	6 $\frac{1}{4}$ × 2 $\frac{3}{8}$ "	" " 3 $\frac{1}{2}$ inch Wrought Steel Mortise, all Nos., and Nos. R 0115, 116, 117, R 0140, 1104, 1704, 1706, 1704 $\frac{1}{2}$ to 7706 $\frac{1}{2}$,	
676 $\frac{1}{2}$	6 $\frac{1}{4}$ × 2 $\frac{3}{8}$ "	" " No. R 0140 $\frac{1}{2}$,	
677	6 $\frac{1}{4}$ × 2 $\frac{3}{8}$ "	" " " R 013 to R 7013 $\frac{1}{4}$, R 730 $\frac{1}{2}$ to R 0735 $\frac{1}{2}$, R 762 to R 766,	
677 $\frac{1}{8}$	6 $\frac{1}{4}$ × 2 $\frac{3}{8}$ "	" " 4 inch Wrought Steel Mortise, all Nos.,	
678	8 × 2 $\frac{1}{4}$ "	" " Nos. 01126, 01126 $\frac{1}{2}$,	
679	9 × 2 $\frac{1}{2}$ "	" " " R 01128 Outside, R 01128 $\frac{1}{2}$,	
679 $\frac{1}{4}$	9 × 2 $\frac{1}{2}$ "	" " " R 01128 Inside,	
689	12 × 3 $\frac{1}{2}$ "	" " " R 01128 Outside, R 01128 $\frac{1}{2}$,	

Packed with Screws.

