

ILLUSTRATED
CATALOGUE

OF

HARDWARE

MANUFACTURED BY

PENN
HARDWARE Co.,

(INCORPORATED.)

FACTORIES AND PRINCIPAL OFFICE,

READING, PA.,

U. S. A.

WAREROOMS:

NEW YORK,

PHILADELPHIA,

CHICAGO,

BOSTON,

BALTIMORE,

DENVER,

SAN FRANCISCO,

	Page
Cupboard Locks,	354
“ Turns,	351, 352, 353
Cup Escutcheons, Flush,	262, 263
Cutters Tobacco,	413

D

Door Bells, Rotary Electric,	447
“ Bolts, Dutch,	331
“ “ Mortise,	324
“ “ Square,	322, 323
“ Buttons,	341
“ Catches, Closet,	345
“ “ Screen,	346, 347
“ Fasteners, Chain,	339, 340
“ Handles and Latches, Store,	235, 236, 237
“ Handles and Locks,	245, 246, 247, 248, 249, 250, 444, 445
“ Handles, Store,	316, 317, 318
“ Hangers, Barn,	402
“ Knobs,	266, 268, 269, 270, 271, 272
“ “ “	273, 274, 275, 276, 277, 278, 436, 437
“ Knobs, Closet,	267
“ “ Wood,	276, 277, 278
“ Latches, Barn,	314, 315
“ Pulls,	355, 356, 357, 358, 446
“ “ Barn,	404
“ “ Sliding,	263, 264
“ Rail, Barn,	403
“ “ Sliding,	401
“ Rollers, Barn,	403, 448
“ Sheaves, Sliding,	401
“ Stays, Barn,	404
“ Stops, Sliding,	401
Double Extension Surface Top and Bottom Bolts,	338
Drawer Pulls, 359, 360, 361, 362, 363, 364, 365	
“ “ Druggist,	364, 365
Drop Cupboard Bolts,	354
“ “ Latches,	354
Druggist Brackets,	415, 416
“ Drawer Pulls,	364, 365
Dutch Door Bolts,	331

E

Eccentric Sash Lock,	404
Elbow Catch,	341
Electric Door Bells, Rotary,	447
“ Push Button,	286, 287, 288
Elevator Sliding Door Latches,	224
Escutcheons Flush Cup,	262, 263
“ and Rose Combined,	255, 256, 257, 258, 259, 260, 261, 262
Escutcheons Plate,	252, 253, 254
Excelsior Shutter Bolts,	320

F

Fasteners, Chain Door,	339, 340
“ Sash,	388, 389, 390, 391
Fasts, Bed,	406

	Page
Files, Paper,	382
Fixtures, Grindstone,	407
Flag or Christmas Tree Holders	411
Floor Clamps,	414
Flower Pot Brackets,	415, 416
Flush Bolts,	331, 332, 333 334 335, 336, 337
Flush Bolts, Mortise,	336, 337
“ Chest Handles,	367
“ Cup and Drop Handles,	368
“ “ Escutcheons,	262, 263
“ Sash Lifts,	394, 395 396
“ Spring Lever Bolts,	335
“ Trap Door Rings,	368
Foot Bolts,	325
“ “ Spring Lever,	325, 326
Frames, Card,	366
Frame Clamps, Quilting,	408, 448
Frame Pulleys,	458 to 497 inclusive
French Window Catches	342, 343

G

Gate Hinges, Western,	308
“ Latches,	309, 310
“ “ Secret,	311
Grape Arbor Posts,	405
Grindstone Fixtures,	407
Grindstones, Kitchen,	407

H

Hammock Hooks,	370
Handles, Box,	368
“ Flush Chest,	367
“ “ Cup and Drop,	368
“ Surface Chest,	367
“ and Latches, Store Door, 235, 236, 237	
“ “ Locks, “ “	245
“ “ “	246, 247, 248, 249, 250, 444, 445
“ and Plates, Lever,	368
“ Store Door,	316, 317, 318
Hangers, Barn Door,	402
Harness Hooks,	372, 373
“ “ Wire,	450
Harps, Wire Lamp,	420
Hat and Coat Hooks,	374, 375, 376
“ “ “ “ Wire,	377, 378, 379, 380, 381
“ “ “ “ “ Wire,	381
Hay Fork Pulleys,	457
Hinges, Bommer Spring,	498, 499, 500
“ L. and P. Shutter,	307
“ Refrigerator,	307
“ Surface Blind,	306
“ Western Gate,	308
Holdes, Christmas Tree or Flag,	411
“ Toilet Paper,	448
Hook Sash Lifts,	392, 393
Hooks, Bird Cage,	383, 384
“ Ceiling,	370, 371
“ Chandelier,	381, 382
“ Clothes Line,	370
“ Hammock,	379

GENERAL INDEX.—Continued.

	Page
Hooks, Harness,	372, 373
“ “ Wire,	450
“ Hat and Coat,	374, 375, 376, 377, 378, 379, 380, 381
“ Hat and Coat, Wire,	381
“ Hotel,	371, 372
“ Paper File,	382
“ Sash Pull,	400
“ School House,	371, 372
“ Towel,	370
“ Wardrobe,	369
Hot House Pulleys,	454
Hotel Hooks,	371, 372

I

Incased Screw Pulleys,	453
“ Swivel “	453
Indicator Bolts, Toilet,	324
Inside Shutter Butts, Fast Joint Cast,	303, 304, 305
Inside Shutter Butts, Fast Joint, Wrought,	304, 305
Inside Shutter Butts, Loose Pin, Wrought,	305
Irons, Porch,	405

K

Keys,	288, 289, 290, 291, 292, 293, 434
Kitchen Grindstones,	407
Knob Spindles,	265
Knobs, Closet Door,	267
“ Door,	266, 268, 269, 270, 271, 272
“	273, 274, 275, 276, 277, 278, 436, 437
“ Mortise Bolt	266
“ Shutter or Sash,	391
“ Turn and Plates,	264, 265
“ Wood Door,	276, 277, 278

L

Lamp Brackets,	417, 418, 419
“ Harps, Wire,	420
Latches, Barn Door,	314, 315
“ Drop Cupboard,	354
“ Elevator Sliding Door,	224
“ Gate,	309, 310
“ and Handles, Store Door, 235, 236, 237	
“ “Heizmann” Cylinder Vestibule Door,	219, 221, 223
“ “Heizmann” Mortise Night,	182
“ “ “ Rim Night,	153
“ Horizontal Rim Knob,	154
“ “ “ Night,	150, 151
“ “ Tubular Rim Night,	151, 152
“ Lever Cupboard,	312
“ Mortise Knob,	179
“ “ “ and Bolt,	180, 181
“ “ “ Night,	182
“ “ “ Vestibule Door, 209, 211, 213	
“ Refrigerator,	311

	Page
Latches, Secret Gate,	311
“ Sliding Door,	225, 226, 227
“ Thumb,	312, 313, 314
Lemon Squeezers,	412
Letter Box Plates,	386
Levers, Bell,	285
Lever Cupboard Latches,	312
“ Flush Bolts, Spring,	335
“ Foot “	325, 326
“ Handles and Plates,	368
Lifts, Flush Sash,	394, 395, 396
“ Hook “	392, 393
“ Sash and Lock Combined,	394
“ Shutter,	404
“ Window,	396, 397
Lock, Eccentric Sash,	404
Locks, Cupboard,	354
“ and Handles, Store Door,	245, 246, 247, 248, 249, 250, 444, 445
“ “Heizmann” Cylinder Front Door,	218, 220, 222
“ “Heizmann” Mortise Dead,	185
“ “ “ Knob, 206, 207	
“ “ “ Store Door,	241, 242, 243, 244
“ “Heizmann” Rim Dead,	157
“ Horizontal “ “ 154, 155, 156	
“ “ “ Knob,	158
“	159, 160, 161, 162, 163, 164, 176, 177
“ Horizontal Rim Knob Store Door,	165
“ “ “ Store Door Dead,	157
“ Mortise Dead,	184
“ “ Front Door,	208, 210, 212
“ “ Knob,	186, 187, 188, 189
“	190, 191, 192, 193, 194, 195, 196, 197
“	198, 199, 200, 201, 202, 203, 204, 205
“ Mortise Store Door,	238, 239, 240
“ “ “ “ Dead,	185
“ Sliding Door,	228, 230, 231, 233, 234
“ “ “ Knob,	224
“ Upright Rim Knob,	165, 166
“	167, 168, 169, 170, 171, 172, 177, 178
“ Upright Rim Knob Front Door, 173, 174	
“ “ “ Store Door Dead, 174, 175	
Lock Sets, Mortise Inside Door,	187
“	188, 189, 190, 191, 192, 193, 194
“ “ Mortise Front Door,	214, 215, 216
“ “ “ Vestibule Door,	214, 215, 217
“ “ Sliding Door,	229, 232, 233
“ “ Store Door Handle,	245
“	246, 247, 248, 249, 250, 444, 445
“ “ Upright Rim Knob Front Door,	173, 174
Lull and Porter Shutter Hinges,	307

M

Mayer Butts,	296
Mortise Bolts,	183
“ Bolt Knobs,	266
“ Door Bolts,	324
“ Flush Bolts,	336, 337

D
E
F
G
H
I
K
L
M

N
O
P
Q
R
S
T
U
V

W
X
Y
Z

INDE
DESI

DOO
KNOE

ESCUT
EON:

LATC
AN
LOC

S.
HAND

PULL

FINIS

GENERAL INDEX.—Continued.

	Page
Stands, Sad Iron,	408
Stays, Barn Door,	404
Stoner, Cherry,	449
Stops, Sliding Door,	401
Store Door Handles,	316, 317, 318
“ “ “ and Latches,	235, 236, 237
“ “ “ “ Locks,	245, 246, 247, 248, 249, 250, 445
“ “ Mortise Locks,	238, 239, 240
“ “ “ “ “Heizmann,”	241, 242, 243, 244
Surface Blind Hinges,	306
“ Butts, Loose Pin,	306
“ Chest Handles,	267
“ Top and Bottom Bolts, Double Ex- tension,	338
Swivel Pulleys Incased,	225, 226, 227

T

Tackle Pulleys,	455, 456
Thumb Latches,	312, 313, 314
Tobacco Cutters,	413
Toilet Indicator Bolts,	324
“ Paper Holders,	448
Towel Hooks,	370
Tower Bolts,	320
Transom Catches,	344, 345

	Page
Transom Plates,	387
Trap Door Rings, Flush,	368
Tree Holders, Christmas or Flag,	411
Tumbuckles,	319
“ “ Rim,	319
Turn Knobs and Plates,	264, 265
Turns, Bell,	447
“ Cupboard,	351, 352, 353
T. Handles and Plate,	440

U

Upright Pulleys,	454
----------------------------	-----

W

Wardrobe Hooks,	369
Washers, Spindle,	265
Well Wheels,	405
Western Gate Hinges,	308
Window Catches, French,	342, 343
“ “ Lifts,	396, 397
“ “ Shade Brackets,	409
Wire Hat and Coat Hooks,	381
“ “ Harness Hooks,	450
“ “ Lamp Harps,	420
Wood Door Knobs,	276, 277, 278

INDEX OF DESIGNS.

Design.	Page.
Arbutus,	I to 8 and 446
Alba,	9 “ 16
Abronia,	17 “ 20
Century,	21 “ 24
Canova,	25 “ 32
Como,	33 “ 36
Crispa,	57 “ 64 and 446
Fluted,	37 “ 44 and 434
Latone,	45 “ 48
Mineola,	49 “ 52
Magnolia, Wrought Bronze Metal and Wrought Steel,	127 “ 132
Norma,	53 “ 56 and 445
Petunia,	65 “ 72 and 446
Plain Bevel Edge, Cast Bronze Metal,	73 “ 80
Plain Bevel Edge, Rolled Bronze Metal,	139 “ 142
Plain Bevel Edge, Wrought Bronze Metal and Wrought Steel,	121 “ 126
Portulaca,	81 “ 90
Plain Oval, Cast Bronze Metal,	91 “ 94
Plain Oval, Wrought Bronze Metal,	143 “ 147
Plain Round Corner, Cast Bronze Metal,	95 “ 98
Plain Round Corner, Wrought Bronze Metal and Wrought Steel,	133 “ 138
Ramona, Wrought Bronze Metal and Wrought Steel,	115 “ 120 and 447
Scroll,	99 “ 106 and 446
Vinca,	107 “ 110
Yucca,	111 “ 114

COMPARATIVE LIST OF FINISHES.

<p>PENN HARDWARE COMPANY.</p>	<p>P. & F. CORBIN.</p>	<p>NORWALK LOCK COMPANY.</p>	<p>RUSSELL & ERWIN MFG. CO.</p>
Vienna Bronzed.	Amber Bronze, Unground.	Venetian Bronzed, Not Polished.	Kahala Bronze, Unground.
Bremen Bronzed.	Amber Bronze.	Venetian Bronzed, Polished.	Kahala Bronze, Ground.
Coppered.	Copper Finish.		Coppered.
Copper Plated.	Coppered.		
Star Finish.			Anaconda.
Satin Finish.			Anaconda.
Brass Plated.			
Nickel Plated.	No5 Finish.	Nickel Plated.	No4 Finish.
Dresden Bronzed, Plain and Ornamental.	Nubian Bronzed.	No1 Finish, Bronze Plated.	No11 Finish, Bronze Plated.
Paris Bronzed	Persian Bronzed.	No3 Finish, Bronze Plated.	No3 Finish, Bronze Plated.
Cairo Bronzed.			
Boston Bronzed.		Boston Finish,	Florentine.
Bronze Metal, Plain and Ornamental.	No1 Finish.	No1 Finish, Real Bronze.	No11 Finish, Polished Bronze.
Roman Bronze.	No3 Finish.	No3 Finish, Real Bronze.	No3 Finish, Real Bronze.
Chocolate Bronze.	No4 Finish.	No4 Finish, Real Bronze.	No2½ Finish, Real Bronze.
Old Copper, (Dark).	No22 Finish.	NoO Old Copper.	No7 Finish.
Old Copper, (Light).	No22½ Finish.		
Old Copper, Light Centre, Dark Ends.			No7¾ Finish.
Old Copper, Mottled.			No7½ Finish.
Sand Blast Old Copper (Dark).	A22 Finish.		No07 Finish.
Sand Blast Old Copper (Light).	A22½ Finish.		
Sand Blast Old Copper, Light Centre, Dark Ends.			No07¾ Finish.
Sand Blast Old Copper, Mottled.			No07½ Finish.
Cast Brass.			No10 Finish.
Dull Brass, Plain.		K Old Brass.	No9 Finish.
Dull Brass, Sand Blast.			No09 Finish.
Antique Brass.	No20 Finish.	I. Antique Brass.	No9c Finish.
Antique Brass, Sand Blast.	A20½ Finish.		

ARBUTUS.



No. 6781
No. 6640



No. 6536



No. 6781
No. 6900



No. 6376



No. 6780
No. 6645



No. 6466



No. 6166



No. 6896½



No. 6026



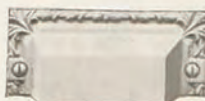
No. 6644



No. 6086



No. 6780
No. 6340



No. 6356



No. 6366

FLUTED—Continued.



No. 6990
No. 6932



No. 6908



No. 6930



No. 6990
No. 6463



No. 6970



No. 6839



No. 6955



No. 6894



No. 6644 1/2



No. 6164

Cuts one-quarter size.

NORMA.



No. 4851
No. 04740



No. 4851
No. 4902



No. 4850
No. 4466



No. 4368



No. 4883



No. 4642



No. 4888



No. 4358

PORTULACA—Continued.

CAST BRONZE METAL AND IRON.



No. 4830
No. 04640¼



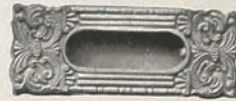
No. 4831
No. 4900



No. 4830
No. 4473



No. 4021



No. 4361



No. 4534



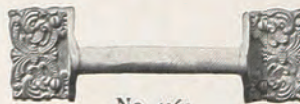
No. 4641



No. 4371



No. 4895



No. 4161



No. 4830
No. 4345

Cuts one-quarter size.

ELECTRIC PUSH BUTTONS.

WITH HARD RUBBER BACKS AND PUSHES.



Nos. 4978 and 5978.



Nos. 4998 and 5998.
MAGNOLIA DESIGN.
Complete with Screws.



Nos. 4488 and 5488.

Number.	Inch.	Finish.	Per Dozen.
4978 5978	4 × 2 “	Bronze Metal. “ “ (Roman).	

FLORAL DESIGN.
Complete with Screws.

Number.	Inch.	Finish.	Per Dozen.
4998 5998	4 × 2 1/8 “	Bronze Metal. “ “ (Roman).	

DAISY DESIGN.
Complete with Screws.

Number.	Inch.	Finish.	Per Dozen.
4488 5488	3 3/4 × 1 1/2 “	Bronze Metal. “ “ (Roman).	



No. 6488.

No. 6998 1/4.
Style of Nos. 9998S and 6998S.



Complete with Screws.

Number.	Inch.	Finish.	Per Dozen.
6488 6998 1/4	3 3/4 × 1 1/2 4 × 2	Bronze Metal. “ “	

WROUGHT BRONZE METAL AND WROUGHT STEEL.
Complete with Screws.

Number.	Inch.	Finish.	Per Dozen.
9998S 6998S	4 × 2 “	Wrought Steel Dresden Bronzed. “ Bronze Metal.	

One-third Dozen in a Box.

Furnished in all desirable Finishes upon application at additional cost for Extra Finish.
Cuts one-third size.