

MOTT'S PLUMBING FIXTURES

CATALOGUE

“A”

THE J. L. MOTT IRON WORKS

Show Rooms and Main Offices

FIFTH AVENUE AND 17TH STREET, NEW YORK

Branch Stores and Selling Agencies

BOSTON
DENVER
ST. LOUIS

CHICAGO
DETROIT
NEW ORLEANS

PHILADELPHIA
WASHINGTON
SAN FRANCISCO

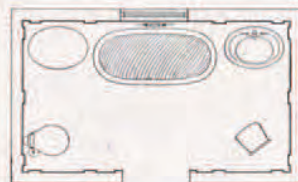
PITTSBURGH
MONTREAL
SAN ANTONIO



Plate 1010-A, Bathroom "Renaissance"

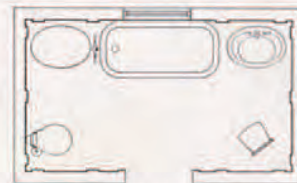
SO far as the classical may be applied to a bathroom it obtains in this interior, both in regard to the fixtures and the tiling. The bath, lavatory and toilet table are of imperial porcelain and harmonize in design and outline, being oval and standing free from the wall. The alternate plan below indicates a "Grantham" bath which is set into the back wall. For views of similar fixtures, see Plates 2054-A, 4017-A, 5506-A and 3657-A.

Tiling—One of the features of this classical design is the pilasters which divide the room into panels. The mirrors for the lavatory and dressing table are set in the tile wall, the tint of which is a delicate white with a dull finish, giving an ivory effect. For prices of the fixtures shown, see page 12.



MINIMUM SIZE, 7' X 12'

Plate 1011-A



MINIMUM SIZE, 7' X 12'

Plate 1012-A



Plate 1026-A, Bathroom "Florentine"

NO room in a residence can contribute more to the comfort, convenience and health of the household than a well-appointed bathroom, such as, for instance, Plate 1026-A. While the entire arrangement, with the various appliances, is eminently useful and sanitary, at the same time it appeals to the eye and is thoroughly artistic. The "Grantham," Plate 2040-A, or the "Victorian," Plate 2054-A, may be substituted for the "Alhambra" bath shown. For views of similar fixtures, see Plates 2050-A, 4036-A, 5567-A and 3655-A.

Tiling — The walls are paneled. The decoration is white and gold, but may be tinted in various colors, if desired. The mirrors for the lavatory and toilet table are set in the tile panels. For prices of the fixtures shown, see page 19.



MINIMUM SIZE, 9' X 9'

Plate 1027-A



Plate 2550-A

Plate 2550-A. The "Keswick" porcelain-enameled iron roll-rim bath on base, painted one coat outside, with "Eton" nickel-plated supply and waste fittings, 5' 5"	\$112 25
Same, 5' 11"	118 25
Plate 2551-A. The "Keswick," as above, with "Unique" fittings as Plate 2534-A, 5' 5"	110 75
Same, 5' 11"	116 75
Plate 2552-A. The "Keswick," as above, with needle and shower as Plate 2572-A, 5' 5"	196 75
Same, 5' 11"	202 75
Plate 2553-A. The "Keswick," as above, with "Thermo" shower as Plate 2530-A, 5' 5"	171 50
Same, 5' 11"	177 50
Plate 2554-A. The "Keswick," as above, with shower and shampoo as Plate 2618-A, 5' 5"	160 75
Same, 5' 11"	166 75

If with No. 1 exterior finish, white, on front and two ends, 5' 5", add \$17.00; same, 5' 11", add \$18.00. If with No. 2 exterior finish, white, on front and two ends, 5' 5", add \$14.00; same, 5' 11", add \$15.50. For description of Nos. 1 and 2 exterior finish, see page 73.

If with china supply bell instead of nickel-plated brass, add \$2.25.

Dimensions: Lengths given above are outside; width outside, 2' 10"; depth inside, 1' 5"; height on base, 1' 9"; width of roll-rim, 4½".

When ordering, state if fittings are right or left as you face the bath.

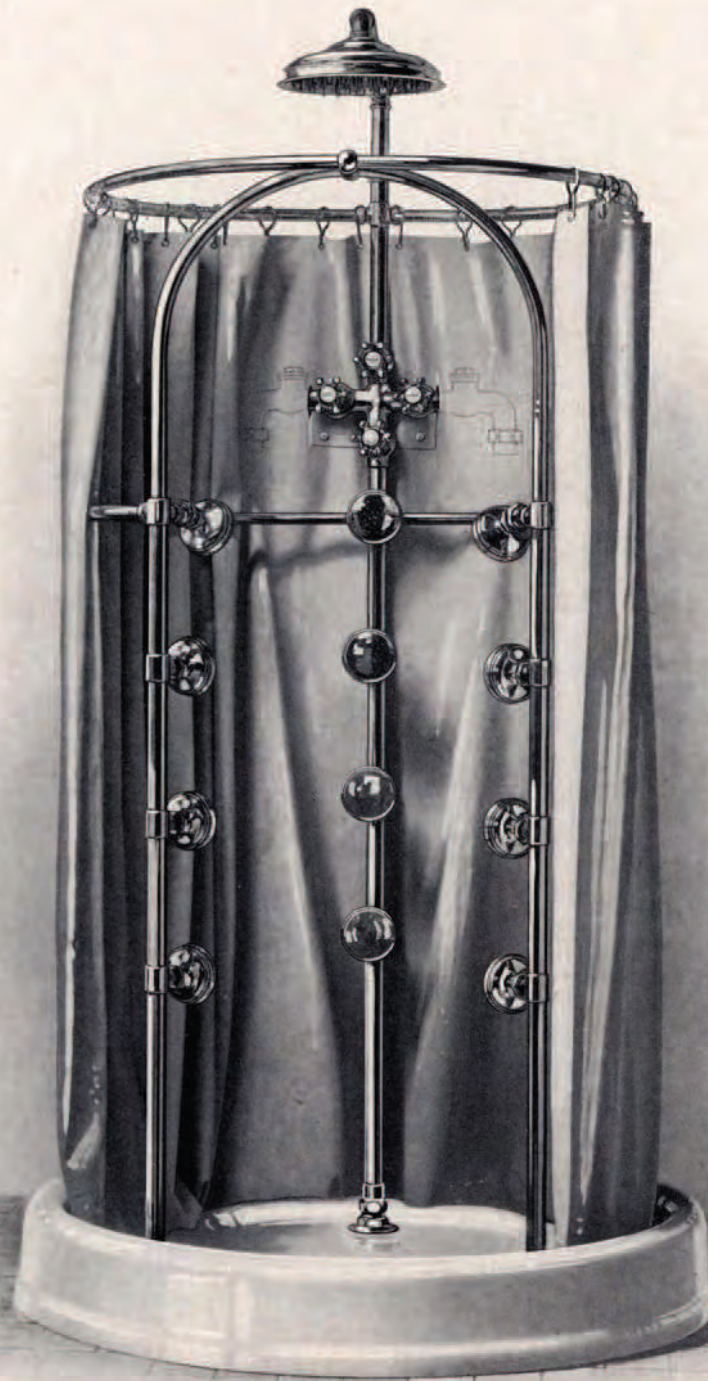


Plate 3003-A

Plate 3003-A. Nickel-plated brass combination rose spray needle and shower bath with white duck curtains, porcelain-enameled iron round receptor (45"), with integral base, nickel-plated waste strainer and coupling \$288 25
 Same, with 36" receptor 276 25

Dimensions: Height of shower, 7' 6"; diameter of shower, 10½"; diameter of rose spray, 4". For dimensions of receptor, see page 120.

If it is desired to install this needle bath on floor without receptor, the standards will be furnished with floor flanges instead of as shown.

THE supply pipes are furnished with check valves. Prices for nickel-plated elbow, escutcheons and pipes to wall furnished on application, according to lengths required. The shower is furnished with detachable tubes. The three upper rose sprays are adjustable.

NOTE.—To obtain proper results with above needle bath, the water pressure should be at least 20 pounds and the supply pipes amply large.

Index

A		Pages
Accessories, Bathroom	154-182, 500-501	
Angle Clamps	434	
Anti-scalding Valves—"Regula"	502	
"Securo"	133, 145	
"Thermo"	133	
B		
Back-water Valves	498	
Backs for Iron Sinks	464	
Barber's Lavatories—Imperial Porcelain		
"Belmont"	243	
"Carlton"	499	
"Cumberland"	241	
"Victorian"	242	
Barber's Lavatories—Porcelain-enameled Iron		
"Brevoort"	244	
"Burton"	245, 262	
Basin Faucets	294-297, 299-301	
Basin Supply Pipes	298	
Basin Wastes	295-297	
Basins—For Marble Lavatories		
"Beekman"	252, 254	
"Hygeia"	253	
"Manhattan"	246, 254	
"Nassau"	252, 254	
"Simplex"	254	
Oval, no Overflow	254	
Oval, Patent Overflow	254	
Basins—Copper	134	
Tilting, for Shampoo	134	
Bath Brush Holder	166	
Bath Faucets	138	
Bath Mats	168	
Bath Seats	167	
Bath Thermometer	167	
Bath Traps	136-137	
Bathroom Chair	172	
Bathroom Furnishings	154-182, 500-501	
Bathroom Interiors	2-31	
Bathroom Scales	168	
Bathroom Seats—Imperial Porcelain	169	
Bathroom Stool	172	
Baths—Imperial Porcelain		
"Alexandria"	57	
"Alhambra"	51	
"Baronial"	38-44	
"Cecil"	54	
"Granada"	56	
"Grantham"	48-49	
"Knickerbocker"	58-59	
"Monmouth"	60	
"Plaza"	45	
"Regent"	34-36	
"Reina"	37	
"Roman"	55	
"Tuscan"	46-47	
"Universo"	61-65	
"Victorian"	52-53	
Baths—Child's, Imperial Porcelain		
"Bellamy"	66	
"Roosevelt"	66	
Baths—Foot, Imperial Porcelain		
"Kenmore"	70	
Baths—Seat, Imperial Porcelain		
"Latona"	68	
"Lincoln"	67	
Baths—Needle and Shower	34-40, 47, 49, 53, 64-65, 75, 77, 86-87, 91-95, 102-134, 140-149, 488-489, 504-505	
"Perry"	505	
"Regent"	36-38, 102	
"Utility"	130	
Rain	125-126, 128-129, 131-132, 141-147, 489, 504	
Ring	130-131	
Shampoos for	133-134	
Waste for Plunge	152	
Baths—Porcelain-enameled Iron		
"Argyle"	81	
"Beekman"	99	
"Cambrian"	89-98	
"Corinthian"	89-98	
"Devonian"	84-87	
"Economic"	101	
"Fairmont"	80	
"Granby"	76-77	
"Grosvenor"	73-75	
"Keswick"	82	
"Layton"	503	
"Lenox"	100	
"Lexington"	89-98	
"Madison"	88	
"Marlboro"	72	
"Nassau"	99	
"Norman"	83	
"Rokeby"	78	
"Roslyn"	79	
"Sarno"	101	
Baths—Foot, Porcelain-enameled Iron		
"Kanawha"	71	
Baths—Seat, Porcelain-enameled Iron		
"Linden"	69	
"Lisbon"	69	
Bidets—"Cascade"	379	
"Dunbar"	502	
"Dupal"	502	
"Geyser"	379	
Porcelain Pedestal	380	
Boilers—Copper	486	
Galvanized Iron	487	
Stands	486	
Bolts—Sink	463	
Boxing	523	
Brackets—Sink	463	
Breakage	523	
Broom Holder	169	

C		Pages
Caldrons		513
Carafe Holders		164-165
Cartage		523
Catalogues and Prices		523
Cesspools and Plates		135-136, 498
Chair—For Bathroom		172
Charcoal Furnaces		498
Child's Baths—Imperial Porcelain		
" Bellamy "		66
" Roosevelt "		66
Cigar Rests		169
Cistern Boards		369
Cisterns—For Water Closets and Urinals .		371, 432
Claims		523
Code		514-515
Collars—Sink		462-463
Comb and Brush Holders		162, 169
Combination Basin Faucets		294-297
Consignee's Responsibility		523
Contracts and Orders		523
Correspondence		523
Countermanding Orders		523
Covers—For Wash Tubs		473, 479
Curtain Rings		130
Curtain Rods		130
D		
Damaged Material		523
Defective Material		523
Dental Bowl—" Dixon "		312
Dental Faucet		294
Door Bumper		433
Door Handle		433
Door Hinges		433
Door Indicators		431, 433
Door Locks		433
Drain Boards		438, 442-444, 446, 449, 452, 454, 458-461, 508
Drainage Fittings—Cast-iron		498
Drains		135-136, 498
Drinking Fountain Faucets		302
Drinking Fountains—Imperial Porcelain		
" Crystal Stream "		309-311
" Dixon "		312
" Erie "		304
" Glenwood "		309
" Huron "		304
" Manitou "		305
" Ontario "		308
" Potomac "		305
" Purita "		310-311
" Saguenay "		307
" Shasta "		305
Drinking Fountains—Nickel-plated Brass		
" Hudson "		308
Drinking Fountains—Nickel-plated Copper		
" Lachine "		306

		Pages
Drinking Fountains—Ornamental Iron		313-314, 512
Drinking Fountains—Porcelain-enameled, etc., Iron		
" Champlain "		306
" Crystal Stream "		309
" Delaware "		307
" Detroit "		308
" Glenwood "		309
" Neptune "		314
Drinking Fountains—Vitreous Ware		
" Geneva "		307
" Juniata "		312
" Oneida "		306

E

Errata		522
------------------	--	-----

F

Faucets—For Bath Tubs		138
For Drinking Fountains		302
For Lavatories		294-297, 299-301
For Shampoo		294
For Sinks		480-483
For Urinals		432
For Wash Tubs		484
Floor Drains		135-136, 498
Floor Flanges		372
Floor Slabs		317
Floor Strainers—For Showers		135-136, 510
Floor Traps		135-136
Flush Pipes		369
Flush Valves		350-361
Flushing Cisterns		371, 432
Folding Lavatories		275
Folding Mirrors		174-175
Folding Urinals		419
Foot Baths—Imperial Porcelain		
" Kenmore "		70
Foot Baths—Porcelain-enameled Iron		
" Kanawha "		71
Fresh Air Inlet Boxes		498
Furnaces—For Melting Lead		498
Furnaces and Ranges		513
Furnishings—For Bathrooms		154-182, 500-501

G

Grab Rails		162
Gratings—For Areas, Sidewalks, Cesspools, etc.		498
Grease Interceptor		503
Grease Traps		464-465
Guards—For Sinks		444, 466-469, 508
Guides and Rods		368

H

Hand Rails		162
Heads—For Showers		132
Heaters—For Showers, etc.		
" Economic "		489, 492-493
" Efficient "		491
" Security "		488-491
" Tobey "		494
Hinges		433

	Pages
Hoppers—(See Water Closets)	366-367
Hospital Fixtures—(See Catalogue "H")	
Hot Water and Steam Heaters	513
Hydrotherapeutic Room	148-149

I

Indicators—Door	431, 433
Insurance—Marine and Other	523
Interiors (Bathrooms and Kitchen)	2-32

K

Kitchen Interior	32
----------------------------	----

L

Lamp Posts	512
Latrines	381-398
Lavatory Basins	246-254
Lavatory Faucets	294-297, 299-301
Lavatory Supply Pipes	298
Lavatory Traps	291-293
Lavatory Waste Pipes	283
Lavatory Wastes	295-297
Lavatories—Barber's	241-245, 262, 499
Lavatories—Imperial Porcelain	
"Arlington" (Manicure Bowl)	240
"Baronial"	209
"Bay State"	219-220
"Belmont"	206-207, 243
"Boylston"	198-199
"Cambridge"	197
"Carlton"	499
"Chatsworth"	187
"Chelsea"	196
"Chesterton"	189
"Claremont"	211-212, 234
"Clinton"	185-186
"Compacto"	214
"Crescent"	217, 233
"Cumberland"	188, 241
"Elsmere"	210
"Granville"	184
"Langdon"	200-201
"Lorraine"	205
"Madison"	215
"Marsden"	190
"Monroe"	218
"Navarre"	204
"Newport" (Manicure Bowl)	195, 501
"Norwalk"	231-232, 509
"Norwood"	194
"Nouveau"	193
"Penn"	222
"Piermont"	221
"Roxborough"	237
"Tremont"	203, 216, 235-236
"Tremont-Rococo"	191, 202
"Unitas"	213
"Utilis" (and Sink)	238
"Victorian"	192, 242
"Windsor"	208

Lavatories—Marble and Onyx	246-253
"Beaufort," Marble	249
"Preston," Marble	247
"Renaissance," Marble	248
"St. Regis," Marble	246

Lavatories—Porcelain-enameled Iron

"Ballard"	276
"Barry"	276
"Baxter"	281
"Bedford"	261, 274, 280
"Bergen"	276
"Berkeley"	272-273
"Beverly"	256-257
"Bolton"	260
"Boston"	269-270
"Bradford"	258-259
"Brayton"	266-267
"Brevoort"	244-255
"Bristol"	264
"Brockton"	265
"Burton"	245, 262-263, 268, 271, 278-279
"Etna"	276-277
Folding	275
"Hampton" (Folding)	275
Sectional	277-283

Lavatories—Vitreous Ware

"Altoona"	223, 226, 230
"Valencia"	228
"Vardon"	226
"Vaughan"	224
"Vauxhall"	227
"Vendome"	224
"Vera"	229
"Veritas"	229
"Verona"	225
"Vindex"	229
"Volga"	225

Leader Pipes—and Connections	498
--	-----

Legs—Sink	463
---------------------	-----

M

Manhole Frames and Covers	498
-------------------------------------	-----

Manicure Tables	195, 239-240, 501
---------------------------	-------------------

Marble Lavatories	246-253
-----------------------------	---------

Marine Fixtures	511
---------------------------	-----

Mats—For Bath Tubs	168
For Sinks	444, 456, 508

Match Boxes	169
-----------------------	-----

Measurements	523
------------------------	-----

Medicine Cabinets	178-182, 500-501
-----------------------------	------------------

Metal Plater's Tanks	498
--------------------------------	-----

Metal Polish	161
------------------------	-----

Mirrors—Folding	174-175
Shaving	175
Square and Oval	174-177

Mixing Chambers—For Showers	134, 141-144
---------------------------------------	--------------

Mixing Valves—For Showers	133, 145
-------------------------------------	----------

Mug Holders	164-165
-----------------------	---------

N

	Pages
Nail Brush Holder	161
Needle and Shower Baths 34-40, 47, 49, 53, 64-65, 75, 77, 86-87, 91-95, 102-134, 140-149, 488, 489, 504-505	
"Perry"	505
"Regent"	36-38, 102
"Utility"	130
Rain, 125-126, 128-129, 131-132, 141-147, 489, 504	
Ring	130-131
Needle and Shower Baths—Mixing Valves for	
"Securo"	133, 145
"Thermo"	133
Needle and Shower Baths—	
Heads for (Tubular and Perforated)	132
Heaters for	488-494
Mixing Chambers for	134, 141-144
Receptors for, Imperial Porcelain, 36-38, 102-103, 106, 118-119, 510	
Receptors for, Porcelain-enameled Iron, 104-105, 107, 120	
Shampoos for	133-134
Thermometer for	134
Waste Strainers for	136, 510
Nickel-Platers' Tanks	498

O

Onyx Lavatories	248-249
Opaloid Towel Rods	501
Orders and Contracts	523
Ornamental Goods	512

P

Packing Goods	523
Paper Holders	170-172
Park Urinals	426-427
Partition Standards	434-435
Payments	523
Pipe and Fittings—Cast-iron Soil	498
Platers' Tanks	498
Plugs—Sink	457, 462
Wash Tub	485
Plunge Baths—Heads for Jets	152
Stand Pipe for	152
Polish—For Metal	161
Prices and Catalogues	523
Privy Sinks	399
Public Comfort Stations	400
Pulls and Chains	368
Purchaser's Responsibility	523

R

Radiators	513
Rain Shower Baths 125-126, 128-129, 131-132, 141-147, 489, 504	

Rain Shower Baths—

Pages

Mixing Chambers for	134, 141-144
Mixing Valve for	133, 145
Shampoos for	133-134
Thermometer for	134
Ranges and Furnaces	513
Receptors—Imperial Porcelain 36-38, 102-103, 106, 118-119, 510	
Receptors—Porcelain-enameled Iron 104-105, 107, 120	
Responsibility of Shipper, Consignee or Purchaser and Transportation Co.	523
Returning Goods	523
Rim Guards—For Sinks	444, 466-469, 508
Ring Showers	130-131
Rings—For Curtains	130
Rinsing Sink	438
Robe Hooks	162-163
Rods—For Curtains	130
Roughing Measurements	523
Routing of Shipments	523

S

Sanitary-perfect Screw Connection	316, 372
Scales	168
Seat Baths—Imperial Porcelain	
"Latona"	68
"Lincoln"	67
Seat Baths—Porcelain-enameled Iron	
"Linden"	69
"Lisbon"	69
Seats—For Bath Tubs	167
For Bathroom	169, 172
Seats and Covers—For Water Closets	370-371
Shampoo Basins	134
Shampoo Faucets	294
Shampoos	133-134
Shaving Mirrors	175
Shipper's Responsibility	523
Shower and Needle Baths 34-40, 47, 49, 53, 64-65, 75, 77, 86-87, 91-95, 102-134, 140-149, 488, 489, 504-505	
"Perry"	505
"Regent"	36-38, 102
"Utility"	130
Rain, 125-126, 128-129, 131-132, 141-147, 489, 504	
Shower and Needle Baths—Mixing Valves for	
"Securo"	133, 145
"Thermo"	133
Shower and Needle Baths—	
Heads for (Tubular and Perforated)	132
Heaters for	488-494
Mixing Chambers for	134, 141-144

	Pages
Toilet Sets—Plain and Decorated	154
Toilet Shelves	154-156, 500
Toilet Table	173, 501
With Manicure Bowl	195
Tooth Brush Holders	160, 162, 164-165
Towel Baskets	161
Towel Hooks	163
Towel Racks	158-160, 163, 500
Towel Rods	157-160, 501
Towel Roller	159, 163
Towel Shelves	500
Traps—For Lavatories	
“Bryant”	292
“Circle”	292
“Dial”	292
“Economic”	293
“Elliptic”	292
“Reliance”	293
“Sanito”	291
“Universal”	292
Traps—Miscellaneous	
Adjustable	293
Bath	136-137
Floor	135-137
Grease	443, 464-465
Laundry Tubs	485
N. Y. Regulation	292-293
Sinks	463
“Tobey” Steam	494
Trap-Standard—“Sanito”	509
Tumbler Holders	164-165

U

Urinal Cisterns	371, 432
Urinal Faucets	432
Urinal Gutter	420-421
Urinal “Pull” Notice	432
Urinal Stall Hangers (Quaker City)	432
Urinal Stalls (Marble and Slate)	415
Urinal Strainer	421
Urinal Supply Fittings	432
Urinal Traps	417
Urinals—“Bedfordshire”	418-419
“Beekman”	422-424
“Directo”	415
“Eclipso”	407-409
“Metropolitan”	414
“Newport”	413
“Panama”	417
“Purita”	412

	Pages
Urinals—“Sanito”	402-406, 411, 506-507
“Stevens”	416
“Syphono”	410-411
“Utica”	425
“Vento”	421
Enameled Iron	425-427
Folding	419
Park	426-427
Slate Stall	420-421
Stalls, Marble and Slate	415
Utensil Rack	510

V

Valves—Mixing, for Needle and Shower	
“Securo”	133, 145
“Thermo”	133
Back-water	498
Vault Covers	498
Vent Grates	498
Ventilators	498

W

Wash Basins—For Marble Slabs	254
(See Lavatories)	
Wash Sinks—Iron	
“Barnett”	290
“Factoro”	286-289
“Utility”	284-285
Wash Tub Covers	473, 479
Wash Tub Faucets	484
Wash Tub Plugs	485
Wash Tub Waste Pipes	485
Wash Tub Wringer	484
Wash Tubs	
“Graham” (Combination)	473
“Warren”	479
“Wentworth”	474, 478
“Weston”	477
“Wickliffe”	475-476, 478
Waste—For Lavatories	295-297
For Plunge Bath	152
For Wash Tubs	485
Waste Pipe—For Lavatories	283
Waste Strainers—For Shower	135-136, 510
Water Closet Ranges	
“Privus”	390-393
“Sanito”	382, 386
“Solus”	386-389
Iron, Painted	394-398
Iron, Porcelain-enameled	394-398
Water Closets—Concealed Cistern	
“Akron”	364
“Beekman”	362
“Prompto”	362
“Silentis”	363
“Torrento”	362

	Pages
Water Closets—Flush Valve	
“Akron”	364-365
“Anti-freezing”	366-367
“Beekman”	355-356, 358
“Compacto”	359
“Cyclo” (Pneumatic)	342-343
“Hercules”	360
“Hudson”	365
“International”	361
“Langham”	352-353
“Oregonian”	356
“Prompto”	355-356, 358
“Renaissance”	319
“Silentis”	354
“Titan”	360
“Torrento”	358
“West Point”	357
Enameled Iron	366-367
Water Closets—High Cistern	
“Ajax”	334
“Anti-freezing”	366
“Beekman”	324, 326-328
“Berwick”	340
“Compacto”	333
“Cyclo”	342-343, 366
“Down-flush”	339
“Economic”	341
“Hercules”	338
“Itasca”	341
“Juventus”	338
“Lenox”	339
“Prompto”	322-325
“Renaissance”	319
“Silentis”	320-321
“Titan”	335-337
“Torrento”	330-332
“Trento”	340
“West Point”	328-329
Water Closets—Latrines	381-398
Water Closets—Low-down Cistern	
“Beekman”	346-349
“Compacto”	347-349
“Prompto”	344, 346, 348
“Silentis”	344-345
“Titan”	349
“Torrento”	347-348
Water Closets—Pneumatic Cistern	
“Cyclo”	342-343, 366

Water Closets—Prison	364-365
Water Closets—Sundries for	
Bidets	379
Chair	363
Cisterns	371, 432
Cistern Boards	369
Floor Flanges	372
Flush Valve	319, 350-361
Flush Pipes	369
Guides	368
Hoppers	366-367
Porcelain Floor Slab	317
Pulls	368
Push-button Flush Pipes	369
Sanitary-perfect Screw Connection	316, 372
Seats and Covers	370-371
Sectional Views	373-378
Stall Fittings	433-436
Stall Frames	429-431
Supply Pipes	369
Water Heaters	488-494
Water Heating and Ironing Stoves	487
Whiskbroom Holder	169
Wringer	484

Other Departments

Hospital Department	511
Kitchen Range, Furnace and Stove Department	32, 513
Marine Department	511
Ornamental Department (Fountains, Vases, etc.), Iron, Brass and Bronze Department	512
Stable Fittings Department	512
Steam and Hot Water Heaters and Radiators	513
Tile Department —See Interiors, pages 2 to 32 and general illustrations wherever Tile is shown in Catalogue A. Estimates given. Plans and samples furnished on application.	

Errata

- Page 271. Reference to Plate 4557-A should read Plate 4560-A.
- Page 272. Reference to Plate 4556-A should read Plate 4559-A.
- Page 289. Reference to Plate 4572-A should read Plate 4574-A.
- Pages 217 and 233. Correct measurements of “Crescent” Lavatory, right to left, 24”; back to front, 20”.