

# BUILDERS' HARDWARE

: MANUFACTURED BY :

LOCKWOOD MANUFACTURING COMPANY

---

WORKS AND MAIN OFFICE :

SOUTH NORWALK, CONN.

---

—OFFICES—

BOSTON  
36 Pearl Street

NEW YORK  
79 Reade Street

CHICAGO  
118 Lake Street

---

Supplementary to our General Catalogue

# LOCKWOOD MANUFACTURING CO.

## INDEX TO 1897 PORTFOLIO.

**A**  
ADJUSTERS, CASEMENT, . . . . . 58, 96, 133

**B**  
BOLTS, CREMORNE, . . . . . 132  
" DOUBLE, . . . . . 84  
" DUTCH, . . . . . 56  
" INDICATOR, . . . . . 98  
" TOILET, . . . . . 98, 136  
" FLUSH, . . . . . 138  
" EXTENSION, . . . . . 85  
BUTTONS, PUSH, . . . . . 85  
" PLAIN, . . . . . 62, 86, 125, 139  
" ORNAMENTAL, . . . . . See Designs  
BUTTS, BRONZE, . . . . . 13, 56, 136  
" STEEL, . . . . . 48  
" TOILET, for Marble, . . . . . 136

**C**  
CATCHES, CUPBOARD, . . . . . 38, 92, 138  
" ELBOW, . . . . . 89  
" FR WINDOW, . . . . . 38, 92  
" SCREEN DOOR, . . . . . 93, 94, 95  
" TRANSOM, . . . . . 38, 58, 91, 137  
CABINET TRIM., PLAIN, . . . . . 38, 59, 91, 138  
" ORNAMENTAL, . . . . . 19, 20, 31, 37, 99, 138  
CENTRES, SASH, . . . . . 58  
CHAINS, TRANSOM, . . . . . 90

**D**  
DESIGNS, ALBEMARLE, . . . . . 36, 37, 49  
" ALEXANDRA, . . . . . 27, 32, 37  
" ANDOVER, . . . . . 64, 75, 83  
" ARDENNES, . . . . . 74, 99  
" ARCADIA, . . . . . 77, 81  
" ANGLURE, . . . . . 80  
" BEDFORD, . . . . . 28, 29, 30, 33, 34  
" BERKSHIRE, . . . . . 60, 83  
" BEVERLY, . . . . . 119  
" BORDEAUX, . . . . . 105  
" BOSTON, . . . . . 120  
" CAMBRIDGE, . . . . . 71  
" CHESTERFIELD, . . . . . 76  
" CANTERBURY, . . . . . 109  
" DIANA, . . . . . 102  
" DORIAN, . . . . . 103  
" EASTPORT, . . . . . See price list, page 35  
" FAIRFIELD, . . . . . 18, 19, 28, 35  
" FLEUR DE LIS, . . . . . 50  
" HARWICH, . . . . . 72  
" IONIAN, . . . . . 9, 27, 31, 34  
" LACONIA, . . . . . 8  
" LITCHFIELD, . . . . . 62, 67  
" LYNNFIELD, . . . . . 69  
" LENOX, . . . . . 118  
" MARENGO, . . . . . 110  
" MARCELLUS, . . . . . 79, 81, 99  
" MARLBORO, . . . . . 140  
" MARSEILLES, . . . . . 51

**D**  
DESIGNS, MELROSE, . . . . . 78, 82  
" MILFORD, . . . . . 63, 83  
" NORFOLK, . . . . . 101  
" RENNES, . . . . . 123  
" RIDGEFIELD, . . . . . 70  
" ROCHEFORT, . . . . . 106  
" SALONA, . . . . . 107  
" SIENNA, . . . . . 108  
" SAYBROOK, . . . . . 10, 20, 26, 35  
" STANWICK, . . . . . 73, 81  
" SUFFIELD, . . . . . 82  
" ST. GERMAIN, . . . . . 121  
" TUSCANY, . . . . . 122  
" WERWICK, . . . . . 104  
" WESTFIELD, . . . . . 124  
" WESTPORT, . . . . . See price list, page 35  
" WILTON, . . . . . 68  
" WOODMONT, . . . . . 61, 67  
DOOR STOPS, . . . . . 138  
" HOLDERS, . . . . . 138

**E**  
ESCUTCHEONS, PLAIN.  
" Combined, 12, 17, 26, 40, 41, 48, 49,  
62, 86, 87, 125.  
" Flush, Cup, . . . . . 15, 62, 86, 88, 125  
" Plate, . . . . . 38, 86  
" ARABESQUE.  
" Combined, . . . . . 1, 2, 40, 48, 49  
" Flush, Cup, . . . . . 55  
" ORNAMENTAL, . . . . . See Designs

**F**  
FASTENERS, CASEMENT, . . . . . 12, 47, 58, 137  
" DOOR, . . . . . 138  
" SASH, Victor, . . . . . 39  
" " Boston, . . . . . 90  
" " Universal, . . . . . 135  
FINISHES, . . . . . See page 2 of No. 6 Price List

**H**  
HANDLES, DROP, . . . . . 88  
" LEVER, . . . . . 12, 59, 84, 93, 95, 96, 127, 132, 139  
" TEE, . . . . . 59, 96  
" STORE DOOR, Arabesque, . . . . . 42  
" " Plain Bronze, . . . . . 14, 33, 67  
" " Orna " . . . . . 14, 33, 34, 35, 67, 81  
" " " 82, 83, 101, 111, 112, 113, 114, 115,  
116, 117.  
" " " Iron, . . . . . 8, 111  
" " " Japanned, . . . . . 131  
HINGES, SURFACE, for Marble, . . . . . 136  
HOOKS, COAT AND HAT, . . . . . 57, 134  
" CABIN DOOR, . . . . . 89  
" HALL TREE, . . . . . 134  
" SASH, . . . . . 47  
" WARDROBE, . . . . . 57

# INDEX—Continued.

## K

KNOBS, DOOR, Arabesque, . . . . .	2, 40, 48, 49
“ “ Jet, . . . . .	1, 2
“ “ Glass, . . . . .	100
“ “ Plain, . . . . .	40, 47, 48, 49, 62
“ “ Screwless, . . . . .	47
“ DRAWER, . . . . .	99
“ THUMB, . . . . .	23, 24, 59, 88, 126, 138

## L

LATCHES, CABINET, . . . . .	59, 127
“ ELEVATOR, . . . . .	138
“ KNOB, Mortise, . . . . .	59, 97, 127
“ NIGHT, “ . . . . .	24, 139
“ “ Rim, . . . . .	25, 131
“ OFFICE, . . . . .	22, 53, 128
“ SCREEN DOOR, . . . . .	127
“ STABLE “ . . . . .	131
“ TOILET “ . . . . .	98, 136
“ VESTIBULE, . . . . .	7, 22

LIFTS, SASH, PLAIN.	
“ “ Bar, . . . . .	38, 57
“ “ Flush, . . . . .	38, 57, 90, 137, 138
“ “ Hook, . . . . .	38, 57, 58, 90, 137
“ “ Lock, . . . . .	58 137
“ “ ORNAMENTAL, . . . . .	See Designs

LOCKS, MORTISE.	
“ “ Bath Room, . . . . .	88, 126
“ “ Communicating Door, . . . . .	46, 126
“ “ Dead, . . . . .	44, 53, 128, 139
“ “ Front Door, . . . . .	6, 21, 54, 128, 129
“ “ Fr Window, . . . . .	12, 97, 127, 130
“ “ Hotel, . . . . .	3, 4, 5, 52, 54, 128, 130
“ “ Interior Door, . . . . .	3, 4, 17, 48, 52, 97, 130
“ “ Master Keyed, . . . . .	3, 4, 5, 52, 130, 139
“ “ Office Door, . . . . .	43, 53, 128
“ “ Sliding, . . . . .	15, 16, 55
“ “ Store, . . . . .	14, 23, 42, 54, 129, 139
“ “ Three Bolt,, . . . . .	46, 126
“ “ Toilet Door, . . . . .	98
“ “ Vestibule Door, . . . . .	7, 22
“ RIM.	
“ “ Dead, . . . . .	45
“ “ Knob, . . . . .	131
“ “ Master Keyed, . . . . .	131
“ “ Ship, . . . . .	88
“ SASH, . . . . .	39, 90, 135

## P

PLATES, CARD, . . . . .	11, 137
“ HINGE, Cabinet, . . . . .	19, 20, 30, 31, 37, 38, 99
“ “ Door, . . . . .	64, 78
“ KEY, Cabinet, . . . . .	19, 20, 30, 31, 37, 38, 99, 138
“ “ Door, . . . . .	See Designs

## P

PLATES, KEY, Drop, . . . . .	100, 137
“ LABEL, . . . . .	11
“ LETTER BOX, Plain, . . . . .	133
“ “ “ Ornamental, . . . . .	See Designs
“ PULL, Plain, . . . . .	13, 41, 87
“ “ Ornamental, . . . . .	See Designs
“ PUSH, Plain, . . . . .	41, 87,
“ “ Ornamental, ✓ . . . . .	See Designs
“ SASH, . . . . .	90
PULLS, CABINET, . . . . .	99, 138
“ DOOR, Plain, . . . . .	11, 13, 41, 57, 65, 89
“ “ Ornamental, . . . . .	See Designs
“ DRAWER, Druggist, . . . . .	11, 47, 137
“ “ Drop, Plain, . . . . .	38
“ “ Ornamental, . . . . .	See Designs
“ “ Flush, . . . . .	137
“ “ Surface, . . . . .	38, 89
“ FINGER, . . . . .	11, 137
“ SLIDING DOOR, . . . . .	16, 138
PIVOTS, TRANSOM, . . . . .	58

## S

SASH, CENTRES, . . . . .	58
“ FASTENERS, . . . . .	39, 90, 135
“ LIFTS, . . . . .	38, 57, 90, 137, 138
“ PLATES, . . . . .	90
“ SOCKETS, . . . . .	90
“ STOPS, . . . . .	139
SETS, LOCK, BATH ROOM, . . . . .	88, 98
“ “ INTERIOR DOOR, Arabesque, . . . . .	1, 2, 48
“ “ “ Plain, . . . . .	17, 48, 62, 86, 125
“ “ FRONT “ Arabesque, . . . . .	40, 49
“ “ “ Plain, 26, 40, 41, 49, 62, 86, 125	
“ “ FR WINDOW, . . . . .	12
“ “ SCREEN DOOR, . . . . .	127
“ “ SLIDING DOOR, Arabesque, . . . . .	55
“ “ “ Plain, . . . . .	15, 16, 62, 86, 125
“ “ STORE “ 14, 33, 42, 67, 83, 115, 116, 131	
“ “ “ Ornamental, 14, 42, 111, 112, 113, 114, 115, 116, 117	
“ “ VESTIBULE DOOR, Arabesque, . . . . .	40, 49
“ “ “ Plain, 26, 40, 41, 49, 62, 86, 125	
	Also See Designs.
SOCKETS, SASH, . . . . .	90

## T

TRANSOM, CATCHES, . . . . .	91
“ CHAINS, . . . . .	90
TURNBUCKLES, MORTISE, . . . . .	59, 96
“ RIM, . . . . .	12, 47, 58, 137
TURNS, CUPBOARD, . . . . .	38, 91, 92, 138
TOILET DOOR TRIM, . . . . .	136

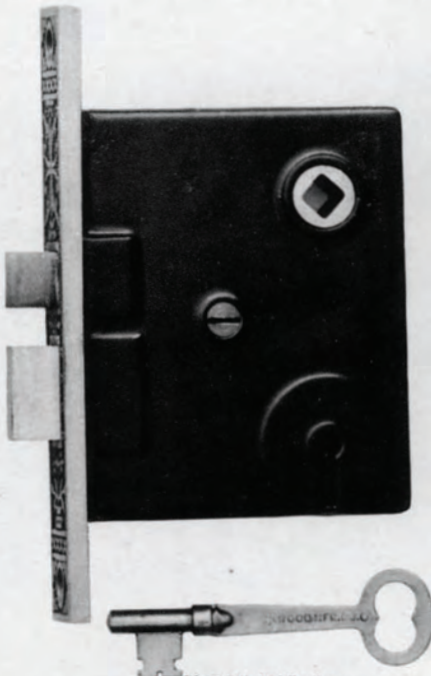


No. 305 BLANK. No. 306 CUT.

STYLE OF KEY NOW SUPPLIED WITH ALL OF OUR CYLINDER LOCKS.

# Lockwood Manufacturing Company.

## INSIDE MORTISE SETS.



Size,  $3\frac{1}{4} \times 3\frac{1}{4}$  Inches.  
No. 3128. Bronze Metal Front,  
Bolts and Strike.  
One Tumbler.



Size,  $1\frac{1}{4} \times 5\frac{1}{4}$  Inches.  
No. 9354 Knob,  $2\frac{1}{4}$  Inch, Jet,  
Bronze Covered Shank.  
No. 652 Escutcheon,  
Wrought Bronze Metal.



Size,  $1\frac{1}{4} \times 5\frac{1}{4}$  Inches.  
No. 8040 $\frac{1}{2}$  Knob,  $2\frac{1}{4}$  Inch,  
Wrought Bronze Metal.  
No. 652 Escutcheon,  
Wrought Bronze Metal.

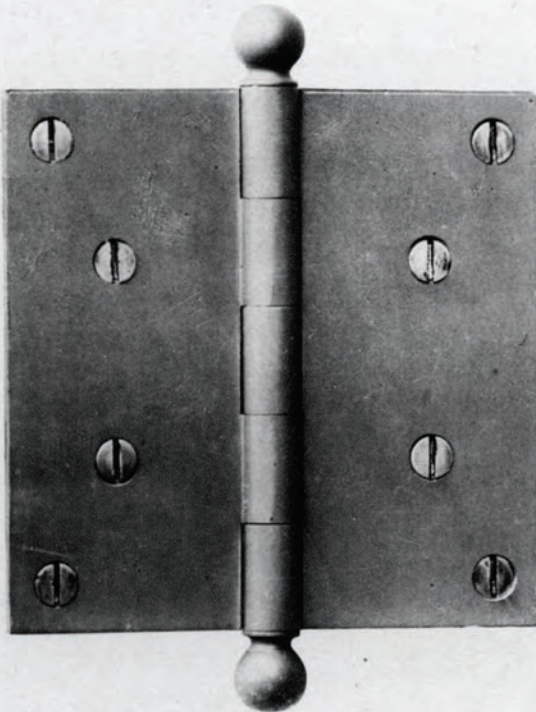
No. of Set.	SET CONSISTS OF	Per Dozen Sets.
322	No. 3128 Lock; One Pair No. 9354 Knobs; Two No. 652 Escutcheons.	\$
324	No. 3128 " " " 8040 $\frac{1}{2}$ " " " "	<del>12.50</del>
326	No. 3126 " " " 9354 " " " "	18.00
328	No. 3126 " " " 8040 $\frac{1}{4}$ " " " "	

No. 3126 Lock is shown on Plate 1.

Furnished in Nos. 1, 3, 4, 7 and 8 Finishes.

One-Quarter Dozen Sets in Box, with Screws.

# Lockwood Manufacturing Company.



No. 8695



No. 8211. Right Hand

**HEAVY LOOSE PIN BRONZE METAL BUTTS.**  
STEEL BUSHED.

No. 8695	3x3	3½x3½	4x4	4½x4½	5x5	5½x5½	6x6	Inches
	\$	\$	\$	\$	\$	\$	\$	Per Pair
One Pair in Box, with Screws.								

**BRONZE METAL DOOR PULL.**

No. 8211—Plate 12x3 Inches		\$	Each.
Made both Right and Left Hand. In ordering specify which hand is wanted.			
Two in Box, with Screws.			

# Lockwood Manufacturing Company.

Front and Vestibule Door Escutcheons

For

Lockwood Front Door Locks and Vestibule Latches.



No. 1757 Escutcheon  
No. 9137 Knob



No. 1786 Escutcheon  
No. 9058 Knob

(For Description see other side.)

# Lockwood Manufacturing Company.

Iron and Steel Front Door Escutcheons.



No. 702 Escutcheon  
No. 9206 Knob



No. 773 Escutcheon  
No. 9211 Knob



No. 705 Escutcheon  
No. 9205 Knob

(For Description see other side.)

# Lockwood Manufacturing Company.

Stanwich Designs.

Cast Bronze Metal.



No. 778 Escutcheon  
No. 9136 Knob



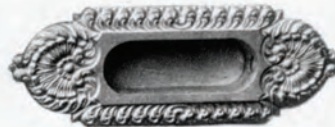
No. 1778 Escutcheon  
No. 9188 Knob



No. 1610 Escutcheon  
No. 9136 Knob



No. 7264



No. 6420



No. 878

For Store Door Handles this Design see Plate 81.

(For Description see other side)