

COLONIAL AND EARLY ENGLISH HARDWARE

ALTHOUGH the title of this book is "Colonial and Early English Hardware" it will be found to contain a wide and comprehensive range of designs. At the time of its first edition, these architectural styles were predominate — and still are in point of actual use — but there has since been a growth in the tendency to employ the characteristics of the Spanish and French.

The so-called Mediterranean style has developed, combining the Italian and Spanish and has rapidly gained favor, especially in the warmer climates. One also notes, in the adaptations and diversifications of other styles an effort to create distinctive buildings.

These conditions have prompted the inclusion of the many designs to be found herein. The general line, however, will continue to be known by its original title, under which it has gained a most valuable reputation.



P. & F. CORBIN

The American Hardware Corporation, Successor

NEW BRITAIN, CONN., U. S. A.

NEW YORK

CHICAGO

PHILADELPHIA

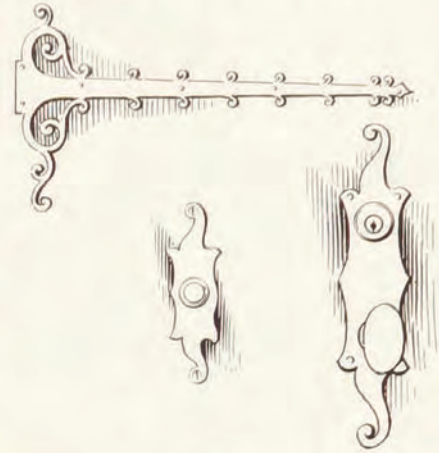
Catalog No. K553

Copyright 1931, P. & F. Corbin

Hardware for the Entrance Doors



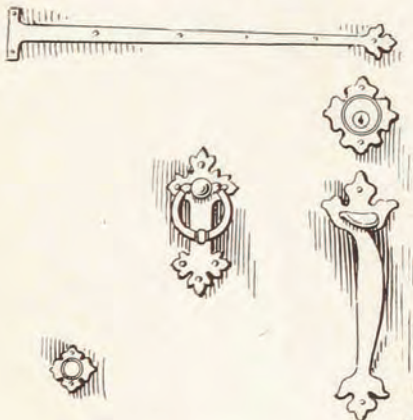
LAVERSTOCK



(See page 19)

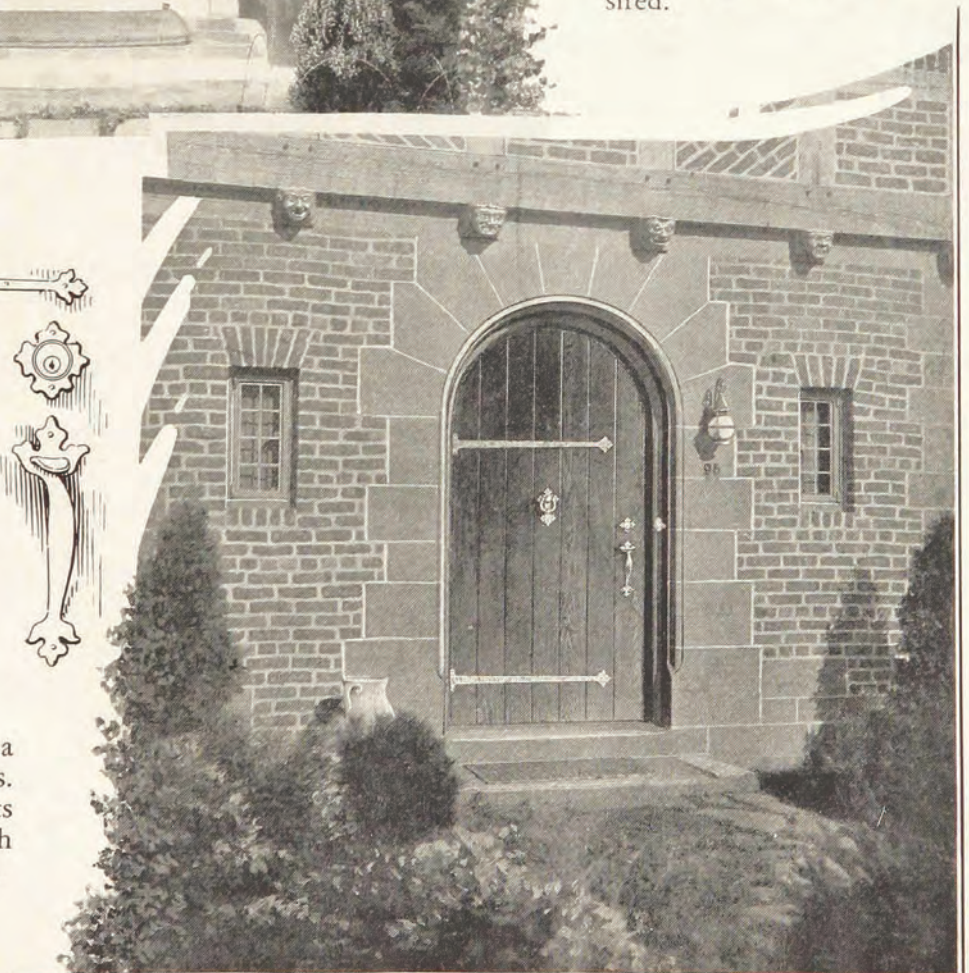
The ornate scroll of these hinge plates and escutcheon offers a splendid means of relieving an entrance which may otherwise be too plain. A door knocker may of course be selected if desired.

SHREWSBURY



(See page 20)

This design fits well into a setting of Gothic features. Its rugged contour imparts an impression of strength without unnecessary bulk.



Somerset

(Application on page 8)



CYLINDER COLLAR
NO. 50713
4 1/8 x 2 in.



ENTRANCE
DOOR HANDLE
NO. 50784
10 x 2 in.
Projection 2 1/4 in.
Handle number in-
cludes Cylinder Collar.



INTERIOR DOOR
ESCUTCHEON
NO. 50731
8 x 2 1/2 in.
KNOB NO. 7922
2 in. dia.



ELECTRIC
PUSH BUTTON
NO. 50761
3 x 1 in.



ENTRANCE
DOOR KNOCKER
NO. 50768
7 1/2 x 4 in.
Furnished with through bolt



THUMB KNOB
NO. 50749
2 x 1 in.
3/16 in. spindle



ENTRANCE DOOR
ESCUTCHEON
NO. 50730
9 1/2 x 2 3/4 in.
KNOB NO. 7922
2 in. dia.



LETTER DROP PLATE
Size 2 3/8 x 8 1/2 in. Opening 1 x 4 1/2 in.
NO. 50770 without Back Plate
NO. 50771 with Back Plate



BACK PLATE furnished with NO. 50771
Size 2 3/8 x 8 1/2 in. Opening 1 x 4 1/2 in.
Letter Drop Plates are furnished with
machine screws for attaching from rear.



HINGE PLATE
NO. 50798
Lengths 20 and 30 in. Butt stock 4 in.
In ordering, state length
Other size butt stocks made to order.



LEVER HANDLE
*NO. 50755
Length 3 1/2 in. Projection 2 3/8 in.
ROSE NO. 50704
3 x 1 3/8 in.
For Knob or Lever



ROSE
NO. 50703
2 in. dia.
For Knob or Lever



KEY ESCUTCHEON
NO. 50740
2 x 1 in.



DROP HANDLE
NO. 50757 1/2
For use with Rose
NO. 50757
For lock side
Size 2 3/4 in. dia.
ROSE NO. 50705
2 in. dia.
For Ring only.



PUSH PLATE
NO. 50790
12 x 3 in.

*Not reversible. State hand. Right hand shown.

All furnished with screws or studs No. 7648, as illustrated.

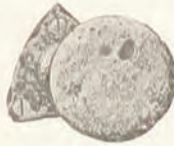
Prefix letters for finish. EH colonium metal; DH bronze metal, black finish.

Plymouth

(Application on page 12)



CYLINDER COLLAR
NO. 53313
2 $\frac{5}{8}$ x 2 $\frac{1}{2}$ in.



KNOB NO. 7926
2 in. dia.
ROSE NO. 53303
1 $\frac{7}{8}$ x 1 $\frac{7}{8}$ in.



ELECTRIC
PUSH BUTTON
NO. 53361
1 $\frac{7}{8}$ x 1 $\frac{7}{8}$ in.



ENTRANCE
DOOR KNOCKER
NO. 53368
5 x 4 in.



THUMB KNOB
NO. 53349
1 $\frac{1}{2}$ x 1 $\frac{1}{2}$ in.
 $\frac{3}{8}$ in. spindle



KEY ESCUTCHEON
NO. 53340
1 $\frac{1}{2}$ x 1 $\frac{1}{2}$ in.



ENTRANCE
DOOR HANDLE
NO. 53384
11 $\frac{1}{4}$ x 2 $\frac{1}{2}$ in.
Projection
1 $\frac{7}{8}$ in.



HINGE PLATE
NO. 53398
Lengths, 20 and 30 in. *Butt stock 4 in.
In ordering, state length.

Handle number includes cylinder collar. Door knocker furnished with through-bolt.
All pieces furnished with oval-head wood screws.

Douvaine

(Application on page 13)



CYLINDER COLLAR
NO. 50213
2 $\frac{3}{4}$ x 1 $\frac{3}{4}$ in.



KNOB NO. 7930
2 in. dia.
ROSE NO. 50203
2 $\frac{7}{8}$ x 1 $\frac{7}{8}$ in.



THUMB KNOB
NO. 50249
2 $\frac{3}{8}$ x 1 $\frac{1}{2}$ in.
 $\frac{3}{8}$ in. spindle



ELECTRIC
PUSH BUTTON
NO. 50261
2 $\frac{3}{4}$ x 1 $\frac{3}{4}$ in.



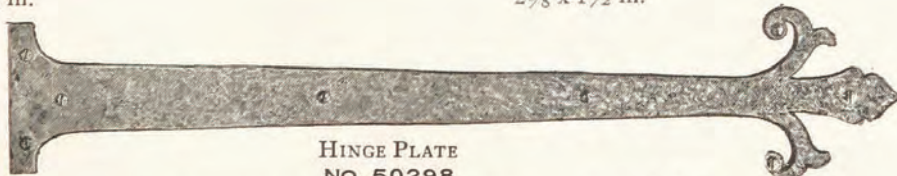
KEY ESCUTCHEON
NO. 50240
2 $\frac{3}{8}$ x 1 $\frac{1}{2}$ in.



ENTRANCE
DOOR KNOCKER
NO. 50268
5 x 3 $\frac{1}{4}$ in.



ENTRANCE
DOOR HANDLE
NO. 50284
11 $\frac{1}{2}$ x 2 $\frac{3}{8}$ in.
Projection
2 in.



HINGE PLATE
NO. 50298
Lengths, 20 and 30 in. Also 24, 26, 28 and 42 in.
Width, overall, 5 $\frac{7}{8}$ in. *Butt stock 5 in.
In ordering state length.

Handle number includes cylinder collar. Door knocker furnished with through-bolt.
All pieces furnished with oval-head wood screws.

*Other size Butt stocks made to order.

Prefix letters for finish. EH colonium metal; DH bronze metal, black finish.

Seville

(Application on page 14)



CYLINDER COLLAR
NO. 50413
2½ x 2½ in.



KNOB NO. 7934
2¼ in. dia.
ROSE NO. 50403
2¾ x 2¾ in.



ELECTRIC
PUSH BUTTON
NO. 50461
2½ x 2½ in.



ENTRANCE
DOOR KNOCKER
NO. 50468
5½ x 4½ in.



THUMB KNOB
NO. 50449
1½ x 1½ in.
⅜ in. spindle



KEY ESCUTCHEON
NO. 50440
1½ x 1½ in.



ENTRANCE
DOOR HANDLE
NO. 50484
10 x 2¾ in.
Projection
2¾ in.



HINGE PLATE
NO. 50498
Lengths, 20 and 30 in. *Butt stock 4 in.
In ordering, state length.

Handle number includes cylinder collar. Door knocker furnished with through-bolt.
All pieces furnished with oval-head wood screws.



CYLINDER COLLAR
NO. 56113
3⅝ x 3⅝ in.

Terranova

(Application on page 15)



ENTRANCE
DOOR KNOCKER
NO. 56168
6 x 3 in.



KNOB NO. 7934
2¼ in. dia.
ROSE NO. 56103
2¾ x 2¾ in.



CYLINDER COLLAR
With Dust Cap
NO. 56114
3⅝ x 3⅝ in.



KEY ESCUTCHEON
NO. 56140
1¾ x 1¾ in.

ELECTRIC
PUSH BUTTON
NO. 56161
2¼" x 2"



THUMB KNOB
NO. 56149
1¾ x 1¾ in.
⅜ in. spindle



HINGE PLATE
NO. 56198
Lengths, 20 and 30 in. *Butt stock 4 in. In ordering, state size.

Handle number includes cylinder collar. Door knocker furnished with through-bolt.
All pieces furnished with oval-head wood screws.

*Other size Butt stocks made to order.



ENTRANCE
DOOR HANDLE
NO. 56184
13⅝ x 3⅝ in.
Projection 3⅝ in.

Prefix letters for finish. EH colonium metal; DH bronze metal, black finish.

Knobs and Escutcheons



ESCUTCHEON NO. 96931
7 $\frac{7}{8}$ x 2 in.
KNOB NO. 9925
1 $\frac{3}{4}$ in. dia.



ESCUTCHEON NO. 96531
7 $\frac{3}{8}$ x 1 $\frac{5}{8}$ in.
KNOB NO. 9918
1 $\frac{3}{4}$ in. dia.

Escutcheons, six in a box, with drive screws
Knobs two pair in a box.



ESCUTCHEON NO. 98731
8 x 1 $\frac{5}{8}$ in.
KNOB NO. 1900
1 $\frac{7}{8}$ x 1 $\frac{3}{8}$ in.
Knob is polished brass.
In ordering, prefix symbol "A".

Knobs, Roses and Key Escutcheons



ROSE NO. 95503
2 $\frac{1}{2}$ x 2 $\frac{1}{2}$ in.
KNOB NO. 9918
1 $\frac{3}{4}$ in. dia.



ROSE NO. 96503
2 $\frac{3}{8}$ x 2 in.
KNOB NO. 1900
1 $\frac{7}{8}$ x 1 $\frac{3}{8}$ in.
Knob is polished brass.



ROSE NO. 95303
2 x 2 in.
KNOB NO. 9925
1 $\frac{3}{4}$ in. dia.



NO. 95540
1 $\frac{1}{2}$ x 1 $\frac{1}{2}$ in.



NO. 96540
1 $\frac{1}{2}$ x 1 $\frac{1}{2}$ in.



NO. 95340
1 $\frac{7}{8}$ x 1 $\frac{1}{8}$ in.

Roses and Key Escutcheons, twelve in a box, with drive screws.

Thumb Knobs



NO. 95549
1 $\frac{1}{2}$ x 1 $\frac{1}{2}$ in.



NO. 96549
1 $\frac{1}{2}$ x 1 $\frac{1}{2}$ in.

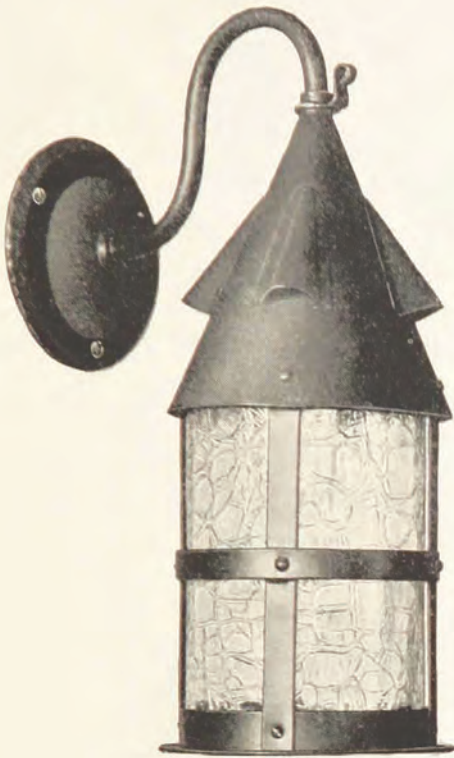


NO. 95349
1 $\frac{7}{8}$ x 1 $\frac{1}{8}$ in.

Thumb Knobs, twelve in a box, with drive screws.

Prefix letters for finish. DD dead black; HD half polished.

Lanterns



NO. 9922

NO. 9922
 With WALL BRACKET
 Height of lantern $13\frac{1}{2}$ in.
 Diameter 6 in.
 Base of bracket $4\frac{3}{4}$ in. dia.
 Center of bracket to top $5\frac{1}{4}$ in.
 Extreme projection $9\frac{1}{2}$ in.



NO. 9932

NO. 9932
 With CEILING FIXTURE
 Height of lantern $13\frac{1}{2}$ in.
 Diameter 6 in.
 Length of chain 36 in.
 Canopy 5 in. dia.



NO. 9924

NO. 9924
 With WALL BRACKET
 Height of lantern $9\frac{1}{2}$ in.
 Base $4\frac{1}{2}$ x $4\frac{1}{2}$ in.
 Base of bracket $3\frac{7}{8}$ x $4\frac{5}{8}$ in.
 Center of bracket to top $6\frac{1}{2}$ in.
 Extreme projection 6 in.
 Not furnished with ceiling
 fixture.