

71226
35.00
PC

SUPPLEMENT
TO
P. & F. CORBIN
1905
CATALOGUE



WORKS AND GENERAL OFFICES:
NEW BRITAIN, CONN.
U. S. A.

WAREHOUSES AND SAMPLE ROOMS:

P. & F. CORBIN
of
NEW YORK

PHILADELPHIA

P. & F. CORBIN
of
CHICAGO

SEPTEMBER 1911

Numerical
Index
to 785 7/8

5990

8842

877

92855

General
Index

esigns

School

ishes
ge VI

INDEX

A	Supplement Page	1905 Cat. Page	B	Supplement Page	1905 Cat. Page
Adjusters , Casement	37	136	Barn Door Latches	62	
America Design , Cast Bronze	128	596	" " Thumb Latches	63	280
" " Wrought Bronze	124	569	Bar Sash Lifts	53	202
" " " Steel	121	554	Bars , Push	96	374
Arco " Cast Bronze	184		Bedford Design , Wrought Bronze	146	658
Athens " Wrought Bronze	145	654	" " " Steel	130	626
" " " Steel	129	624	Bells , Rotary Stroke, in sets	24	82
Atlas " Cast Bronze	171D		Bell Turns	24	82
			Bolts , Anti-Panic	16	
			" Bottom	14	56
			" Chain	15	57
			" Cremorne	12	40
			" Espagnolette	11	36
			" Extension Flush	10	31
			" Flush	9	26
			" Indicator, Water Closet	9	24
			" Mortise Door	13	50
			" Surface Door	14	45
			" Water Closet Door	9	24
			Boxes for Corbin Floor Spring Hinge and Check	7	
			Buttons , Electric Push	28	90
			" Push, for Rotary Stroke Bells	26	86
			C		
Cairo Design , Wrought Bronze	145	650	Cairo Design , Wrought Bronze	145	650
Canton " " Steel	129	621	Canton " " Steel	129	621
Casement Adjusters	37	136	Casement Adjusters	37	136
" Fasteners	31	130	" Fasteners	31	130
Catches , Screen Door	30	126	Catches , Screen Door	30	126
Centers , Sash or Transom	55	208	Centers , Sash or Transom	55	208
Ceylon Design , Wrought Bronze	145	647	Ceylon Design , Wrought Bronze	145	647
Chain Door Fasteners	20	70	Chain Door Fasteners	20	70
Chains , Transom	57	212	Chains , Transom	57	212
Chalons Design , Cast Bronze	182	954	Chalons Design , Cast Bronze	182	954
Check and Spring , Corbin Liquid Door	21		Check and Spring , Corbin Liquid Door	21	
Clips , Umbrella	61		Clips , Umbrella	61	
Coat and Hat Hooks	57	228	Coat and Hat Hooks	57	228
Columbia Design , Cast Bronze	128	587	Columbia Design , Cast Bronze	128	587
" " Wrought Bronze	122	560	" " Wrought Bronze	122	560
" " " Steel	121	551	" " " Steel	121	551
Como " " Bronze	148	668	Como " " Bronze	148	668
" " " Steel	131	634	" " " Steel	131	634
			Corbin Floor Spring Hinges	1	
			" " " " and Liquid		
			Check	2	
			Corfu Design , Cast Bronze	174	
			Corinth " " Iron	144	638
			Corsica " " Bronze	188	1031
			Coruna " Wrought Bronze	152	
			" " " Steel	138	
			Cosmos " Cast Bronze	171A	
			Cremorne Bolts	12	40
			Cumberland Design , Cast Bronze	168	
			Cupboard Turns	29	112
			Cup Escutcheons , Flush	117	538
			D		
			Delft Design , Cast Bronze	183	965
			Description of Finishes	VI	VI
			Designs , Index	II, III	II, III
			" " by School	IV, V	IV, V
			Door Check and Spring , Corbin Liquid	21	
			Door Holders	17	62
			" Knobs	115	520
			" Knockers	29	93
			" Pulls	92	334
			" Stops	18	63
			" " and Holders	18	63
			" or Window Guards	97	
			Drawer Handles	45	150
			" Knobs	44	145
			" Pulls	45	148
			Drop Escutcheons	119	550
			" Handles	46	167
			Dust Proof Strike for Flush Bolts	10	
			Dutch Door Quadrants	29	
			Duxbury Design , Cast Bronze	172	695
			E		
			Electric Push Buttons	28	90
			Escutcheons , Drop	119	550
			" Flush Cup	117	538
			" and Lever Handles	117	539
			" Plate	119	547
			Espagnolette Bolts or Bars	11	36
			F		
			Fasteners , Casement	31	130
			" Chain Door	20	70
			" Sash	48	182
			Figures	47	175
			Finishes , Description of	VI	VI
			Floor Spring Hinges , Corbin	1	
			" " " and Liquid Check,		
			Corbin	2	

INDEX

(CONTINUED)

	Supplement Page	1905 Cat. Page		Supplement Page	1905 Cat. Page	
Flush Sash Lifts	49	196	Latches , Barn Door Thumb	63	280	
French Window Lock Sets	120		" Rim Night	98	387	
G			" Thumb, Cast Brass and Bronze	63	282	
Grips	90	346	" " Store Door	62	281	
Guards , Door or Window	97		Latch Sets , Inside Door	65	285	
H			Leicester Design , Cast Bronze	183	982	
Hampden Design , Cast Bronze	173	853	Leonidas " " "	173	812	
Handles , Drawer	45	150	Letter Box Plates	20	76	
" Drop	46	167	Lever Handles and Escutcheons	117	539	
" and Escutcheons, Inside Door	66		Lexington Design , Cast Bronze	162		
" Flush Cup	117		Lifts and Locks , Sash	49	193	
" Store Door	69	286	" Bar Sash	53	202	
" T	118	545	" Flush Sash	49	196	
Hinges , Corbin Floor Spring	1		Lock Sets , French Window	120		
" " " " and Liquid	2		" " Rim Knob	101	409	
Check	2		" " Store Door	69	286	
Hinges , Water Closet	8	22	Locks , Mortise Dead	104	427	
Holdings , Door	17	62	" " Front Door	112	461	
" " Stop and	18	63	" " " " for Handles	88	332	
" Umbrella	61		" " Knob	105	433	
Holland Design , Wrought Bronze	149	676	" " Knob Hotel	109	452	
" " " Steel	134		" " Sliding Door	112	482	
Hooks , Coat and Hat	57	228	" " Store Door	86	329	
" School House or Wardrobe	60	244	" " Vestibule Door for	88		
Hortense Design , Cast Bronze	189	1034	Handles	88		
I			Locks , Rim Knob	99	399	
Index to Designs	II, III	II, III	Loraine Design , Wrought Bronze	149	670	
" " " by School	IV, V	IV, V	" " " Steel	131	636	
Inside Door Handles and Escutcheons	66		Lotus " " Cast Bronze	191	1040	
" " Latch Sets	65	285	M			
J			Mantua Design , Wrought Bronze	149	672	General Index
Jefferson Design , Cast Bronze	172	691	" " " Steel	132		
K			Marburg " " Cast Bronze	173	840	
Keys	114	511	Marseilles " " "	182	918	
Knobs , Door, Wrought Bronze and Steel	115	523	Meander " " "	173	776	
" " Cast Iron	115	523	Montalto " " "	178		
" " Glass	116	532	Mortise Bolt Knobs	118	543	
" Drawer	44	145	N			
" Mortise Bolt	118	543	Night Latches , Rim	98	387	Designs
" Shutter	43	141	O			
" Thumb	118	544	Oakland Design , Cast Bronze	165	687	
Knob Roses	116		P			
Knockers , Door	29	93	Paris Design , Cast Bronze	190	987	
L			Parts for Top Pivots	7		
Latches , Barn Door	62		Pivots , Ball Bearing	6		
			Plate Escutcheons	119	547	School
			Plates , Letter Box	20	76	
			" Push	94	360	

INDEX TO DESIGNS

II

Not including Designs of which Store Door Handles only are made, pages 294 to 326, 1905 Catalogue

NAME	SERIAL NO.	SCHOOL	SUP. PAGE	1905 CAT. PAGE	NAME	SERIAL NO.	SCHOOL	SUP. PAGE	1905 CAT. PAGE
Albany	764	Colonial		702	Coruna	619	Wrought Steel	138	
Amalfi	881	Italian Renaissance		905	“	719	Wrought Bronze	152	
America		Plain, Wrought Steel	121	554	Cosmos	778	Colonial	171 A	
“		“ Wrought Bronze	124	569	Croatia	952	Louis XIV		995
“		“ Cast Bronze	128	596	Cumberland	777	Colonial	168	
Amiens	860	Gothic		869	Delft	933	Flemish	183	965
Anemona	991	L'Art Nouveau		1039	Duxbury	762	Colonial	172	695
Arco	974	Louis XVI	184		Edinburgh	802	Adams		763
Athens	606	Wrought Steel	129	624	Ercolano	875	Italian Renaissance		886
“	706	Wrought Bronze	145	654	Eros	813	Greek		784
Atlas	779	Colonial	171 D		Flora	990	L'Art Nouveau		1038
Attica	818	Greek		804	Florence	844	Romanesque		844
Balmoral	800	Adams		755	Freiburg	855	Gothic		849
Bedford	608	Wrought Steel	130	626	Fulda	839	Romanesque		825
“	708	Wrought Bronze	146	658	Ghent	935	Flemish		973
Blois	915	Francis I		941	Granada	870	Moorish		878
Boston	799	Adams		753	Hampden	856	Gothic	173	853
Bourbon	910	Early French Renaissance		937	Hartford	923	Renaissance		946
Brooklyn	817	Greek		800	Hatfield	940	Elizabethan		978
Cairo	703	Wrought Bronze	145	650	Holland	617	Wrought Steel	134	
Cambridge	767	Colonial		713	“	717	Wrought Bronze	149	676
Candia	815	Greek		792	Hortense	981	Empire	189	1034
Canton	600	Wrought Steel	129	621	Hudson	751	Dutch Colonial		683
Capri	842	Romanesque		836	Imperial	772	Colonial		732
Ceylon	702	Wrought Bronze	145	647	Jefferson	761	“	172	691
Chalons	925	Renaissance	182	954	Jerome	801	Adams		759
Columbia		Plain, Wrought Steel	121	551	Kent	750	Dutch Colonial		679
“		“ Wrought Bronze	122	560	Leicester	941	Elizabethan	183	982
“		“ Cast Bronze	128	587	Leonidas	820	Greek	173	812
Como	613	Wrought Steel	131	634	Lexington	759	Colonial	162	
“	713	Wrought Bronze	148	668	Lille	890	French Renaissance		914
Concord	651	Cast Iron		640	Lorraine	614	Wrought Steel	131	636
Cordova	871	Moorish		881	“	714	Wrought Bronze	149	670
Corfu	823	Greek	174		Lotus	992	L'Art Nouveau	191	1040
Corinth	650	Cast Iron	144	638	Louvre	973	Louis XVI		1026
“	812	Greek		780	Lucca	876	Italian Renaissance		890
Corsica	980	Empire	188	1031	Lutetia	960	Louis XV		1000

Pages IV and V index by school

Desig

Sch

inis
age

INDEX TO DESIGNS

(CONTINUED)

NAME	SERIAL NO.	SCHOOL	SUP. PAGE	1905 CAT. PAGE	NAME	SERIAL NO.	SCHOOL	SUP. PAGE	1905 CAT. PAGE
Lyons	897	French Renaissance		922	Regal	770	Colonial		724
Mantua	615	Wrought Steel	132		Regina	771	"		728
"	715	Wrought Bronze	149	672	Roanoke	716	Wrought Bronze		674
Marathon	822	Greek		820	Rope	774	Colonial		740
Marburg	843	Romanesque	173	840	Royal	773	"		736
Marne	965	Rococo		1006	Salisbury	857	Gothic		857
Marseilles	891	French Renaissance	182	918	Savoy	898	French Renaissance	182	926
Maryland	765	Colonial		706	Serilly	971	Louis XVI		1018
Meander	811	Greek	173	776	Sparta	821	Greek		816
Mentone	899	French Renaissance		930	Standish	775	Colonial		744
Monaco	924	Renaissance		950	St. Denis	966	Rococo		1009
Montalto	928	"	178		St. Marks	861	Gothic		873
Naples	841	Romanesque		832	St. Remi	900	French Renaissance		934
Nemours	951	Louis XIV		991	Tivoli	879	Italian Renaissance		902
New York	816	Greek		796	Tours	652	Cast Iron	144	642
Norfolk	763	Colonial		699	Trianon	970	Louis XVI		1014
Oakland	760	"	165	687	Trient	859	Gothic		865
Olympus	819	Greek		808	Trojan	814	Greek		788
Orvieto	877	Italian Renaissance		894	Tyrol	858	Gothic		861
Paris	950	Louis XIV	190	987	Utrecht	934	Flemish		969
Parthenon	810	Greek		772	Vendome	926	Renaissance	182	958
Passy	972	Louis XVI		1022	Veronese	878	Italian Renaissance		898
Pavia	882	Italian Renaissance		909	Victor	618	Wrought Steel	136	
Philadelphia	840	Romanesque		829	"	718	Wrought Bronze	150	
Piccadilly	653	Cast Iron		644	Viking	705	Wrought Bronze		652
"	927	Renaissance		962	Vincennes	961	Louis XV		1004
Pilgrim	769	Colonial		720	Virginia	610	Wrought Steel	130	630
Portland	620	Wrought Steel	140		"	710	Wrought Bronze	147	662
"	720	Wrought Bronze	154		Vittoria	611	Wrought Steel	131	632
Princess	609	Wrought Steel	130	628	"	711	Wrought Bronze	147	664
"	709	Wrought Bronze	146	660	Voltaire	712	Wrought Bronze	148	666
Princeton	621	Wrought Steel	142		Warren	766	Colonial		709
"	721	Wrought Bronze	158		Washington		Plain, Wrought Steel	121	557
Puritan	768	Colonial	172	716	"		" Wrought Bronze	126	578
Putnam	707	Wrought Bronze	146	656	"		" Cast Bronze	128	612
Quincy	776	Colonial		748	Windsor	803	Adams		767

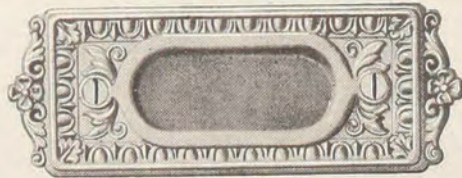
MANTUA DESIGN

WROUGHT STEEL

Illustrations
One-half Size



No. 61534



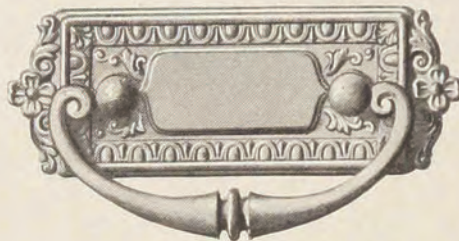
No. 61575



No. 61536



No. 61540



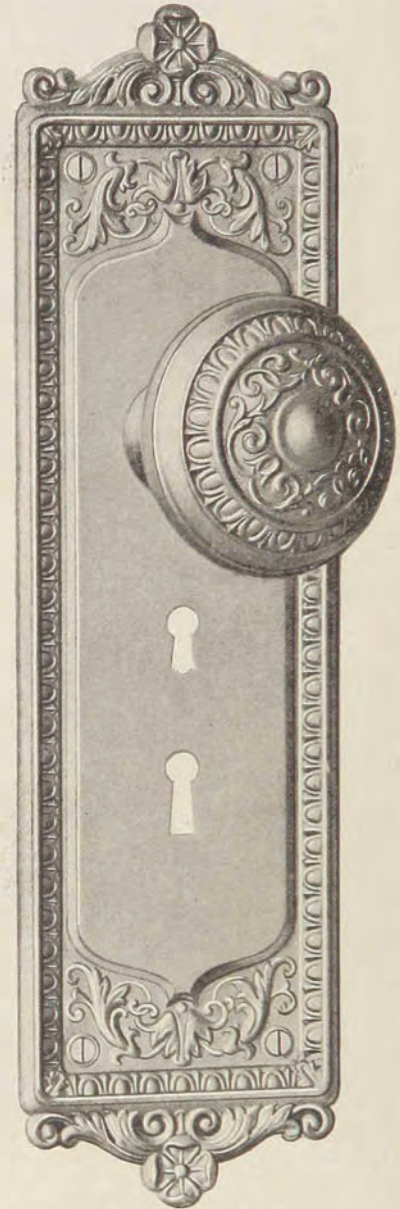
No. 61554



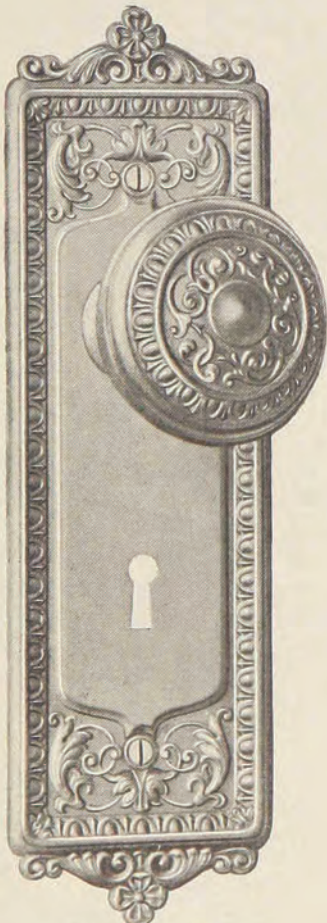
Nos. 61560 AND 61565



No. 61564



No. 61522 KNOB
No. 61529 Esc.



No. 61522 KNOB
No. 61531 Esc.

NUMBER	INCH	DESCRIPTION	N FINISH	R FINISH	SR FINISH
615-20	2½	Door Knobs			Doz. Pr.
615-21	2½ x 2¼	" "			"
615-22	2¼	" "			"
615-29	3⅛ x 11¼	Escutcheon for 4½, 5 and 6 in. Locks			Doz.
615-31	2⅝ x 8¾	" " 3½, 4¼ and 4½ in. Locks			"
615-34	"	Cup Escutcheon for Sliding Door Locks			Doz. Pr.
615-36	1¼ x 2¼	Escutcheon for Drawers			Doz.
615-40	"	" " Doors			"
615-54	1⅝ x 4¼	Drop Handle			"
615-60	2¾ x 5⅝	Electric Push Button			"
615-64	"	Bell Turn for Rotary Stroke Bells Also illustrated, page 25			"
615-65	"	Push Button for Rotary Stroke Bells Also illustrated, page 27			"
615-75	1⅝ x 4¼	Flush Sash Lift			"
615-90	3⅛ x 11¼	Push Plate, illustrated, page 94			"

Mantua Design, Wrought Bronze, see page 672, 1905 catalogue

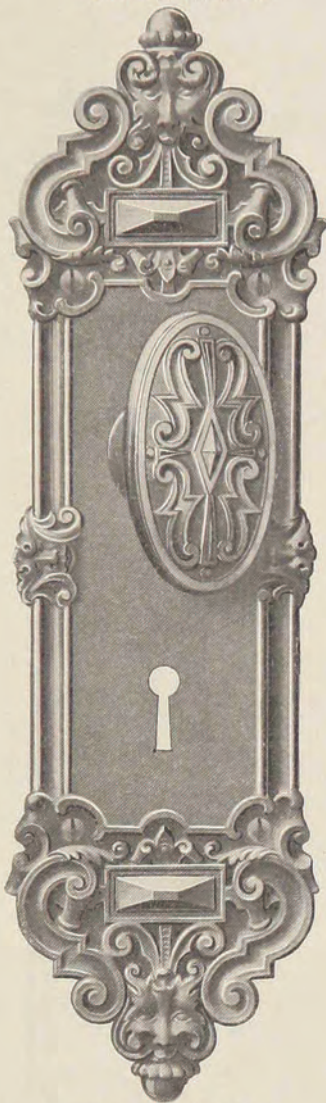
State number of lock to be used with escutcheons

Prefix letters for finish. Description of finishes, page VI

With Screws

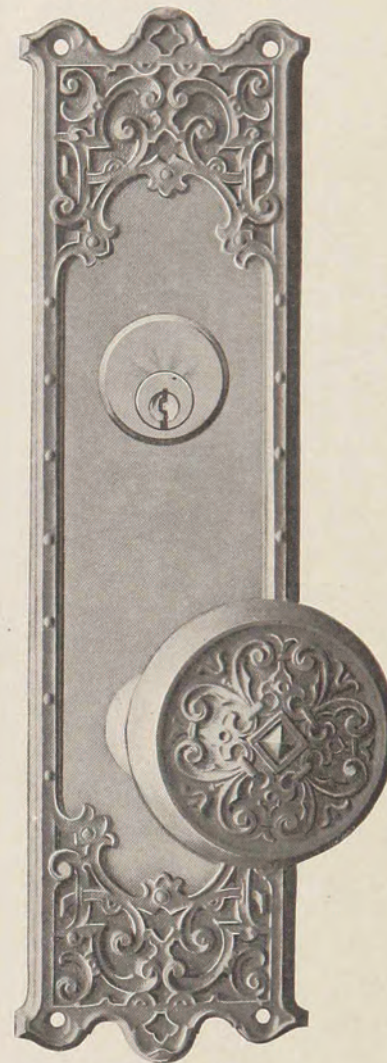


DELFT DESIGN
SCHOOL, FLEMISH



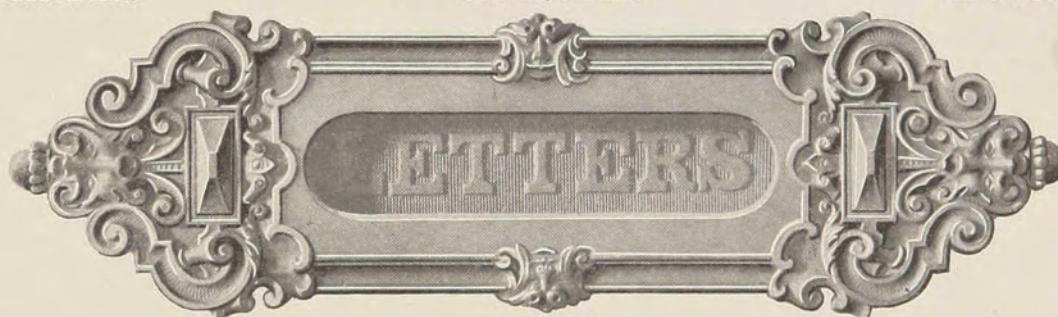
No. 93325 KNOB
No. 93331 ESCUTCHEON

LEICESTER DESIGN
SCHOOL, ELIZABETHAN



No. 94120 KNOB
No. 94130 ESCUTCHEON

DELFT DESIGN
SCHOOL, FLEMISH



No. 93370

NUMBER	INCH	DESCRIPTION	POLISHED	R FINISH	SR FINISH	F FINISH†
933-23	2½	Door Knobs (Oval)				Pr.
933-24	2½ x 2¼	“ “ “				“
933-25	2¼	“ “ “				“
933-31	2⅞ x 10	Escutcheon, see page 965, 1905 catalogue				Each
933-70	“	Letter Box Plate				Doz.
933-71	“	“ “ “ with Back Plate				“
933-72	“	“ “ “ “ Hooded Back Plate				“
941-20	2½	Door Knobs, see page 982, 1905 catalogue				Pr.
941-30	2⅝ x 10	Escutcheon for 4½ and 5 in. Locks				Each

For additional articles Leicester Design see page 982, 1905 catalogue
“ “ “ Delft “ “ “ 965, “ “ “

Prefix letters for finish. Description of finishes, page VI State number of lock to be used with escutcheons †Rustless iron With Screws