

BRANFORD LOCK WORKS



1893 CATALOGUE

LOCKS AND HARDWARE.

THE YALE & TOWNE MANUFACTURING CO., Lessee,
STAMFORD, CONN., U. S. A.

NEW YORK: 84-86 Chambers St.

CHICAGO: 152-154 Wabash Ave.

PHILADELPHIA: 1120 Market St.

BOSTON: 224 Franklin St.

PITTSBURGH: Times Building.

SAN FRANCISCO: Mills Building.

1893.

CONTENTS.

Numerical Index to Locks and Latches..... Page 10
 " " " Key Plates and Escutcheons..... " 14
 " " " Knobs..... " 16

Rim Locks, pages 33 to 76. Mortise Locks, pages 77 to 207.
 "The Branford" Cylinder Locks, pages 288 to 314.
 Lock Furniture and Hardware, pages 262 to 287, 345 to 438 and 439.
 Keys, pages 315 to 344.

Inside Door Sets, pages 208 to 231. Front and Vestibule Door Sets, pages 232 to 261.
 Wrought Steel Locks and Trim, page 439.

GENERAL INDEX.

		PAGE
ALSATIAN Ornamentation.....	439	
Axle Pulleys.....	437	
BARREL Bolts.....	400	
Bar Sash Lifts.....	417, 418	
Bars, Shutter.....	421, 450	
Bell Pulls.....	370-374	
" Lever Pulls.....	375	
Bolt Knobs, Mortise.....	361	
Bolts, Barrel.....	400	
" Chain.....	406	
" Cupboard.....	422, 454	
" Flush.....	405	
" Extension.....	401-404, 452	
" Foot.....	406	
" Mortise Thumb.....	85	
Brackets, Shelf.....	438	
" Branford, The," Cylinder Locks..	288-301	
Buttons, Electric Push.....	376-380	
Butts, Loose Pin.....	385-392, 449	
" Parliament, Loose Joint.....	393	
" Shutter, Fast Joint.....	394	
CATCHES, Cupboard.....	422, 454	
" French Window.....	423	
" Screen Door.....	426	
" Transom.....	426	
Chain Bolts.....	406	
Chain Door Fasteners.....	407-409	
Chandelier Hooks.....	436	
Closet Dead Locks, Rim.....	38	
Closet Knobs.....	362	
Coat and Hat Hooks.....	434, 435	
Colonial Ornamentation.....	19	
Combined Escutcheons.....	268-287, 457, 458	
" " for Cylinder Locks.....	302-314	
Combined Escutcheons, Wro't Steel,	445, 446	
Communicating Door Locks, Three Bolts.....	83, 84	
Corinthian Ornamentation.....	27	
Crank Knobs.....	363	
Crescent Ornamentation.....	31	
Cupboard Bolts.....	422, 454	
" Catches.....	422, 454	
" Turns.....	424, 425, 455	
Cup Escutcheons..	173, 180, 185, 190-193, 456	
Cylinder Locks, "The Branford" ..	288-301	
" Escutcheons for.....	302-314	
" Front Door Locks,	290-292, 294	
" Mortise Night Latches.....	289	
" Office Locks.....	299	
" Rim Night Latches,	300, 301	
" Store Door Locks.....	296-298	
" Vestibule Latches,	291, 293, 295	
DEAD Locks, Horizontal Rim.....	38-42	
" Mortise.....	88-90	
" Rim.....	33-42	
" Sliding Door.....	174	
" Store Door, Horizontal Rim.....	42	
" Upright Rim,	33-37	
Door Catches, Screen.....	426	
Door Fasteners, Chain.....	407-409	

GENERAL INDEX.—Continued.

PAGE	PAGE
Door Knobs, Bronze.....352-359, 447	HANDLES, for "The Branford" Cylin-
" " Closet.....362	der Locks.....298, 459
" " Crank.....363	Lever.....364
" " Bronzed Iron.....351	Refrigerator.....195
" " Jet.....346, 347, 349, 350	for Store Door Locks, 206, 207, 459
" " Mineral.....346, 347	Hat Hooks.....434, 435
" " Mortise Bolt.....361	Hinges, Butt.....385-395
" " Porcelain.....346-349	Refrigerator.....195
" " Screen.....360	Hook Sash Lifts.....414, 453
" " Wrought Steel.....444	Hooks, Chandelier.....436
Door Pulls.....381-384, 448	Coat.....434, 435
" " Offset.....383, 384	Hat.....434, 435
Drawer Knobs.....365	Pull Down Sash.....420
" Pulls.....427-433, 448	Horizontal Rim Dead Locks.....38-42
Duplicate Keys (for Cylinder Locks).....288	" " Knob Latches.....64-68
ELECTRIC Push Buttons.....376-380	" " " Locks.....55-63
Elevator Latches.....173	" " Night Latches.....69-73
Escutcheons, Combined.....268-287, 457, 458	" " "The Branford" Cylin-
" " Wro't Steel, 445, 446	der Night Latches,
" Cup, 173, 180, 185, 190-193, 456	300, 301
" (Key Plates).....262-267	" " Store Door Dead Locks. 42
" " D'ble Keyhole, 266, 267	" " " " Knob.....63
" for "The Branford" Cyl-	Hotel Locks, Mortise.....114-119
inder Locks.....302-314	" " Rim.....76
Extension Bolts, Flush.....401-404, 452	INSIDE DOOR Lock Sets.....208-227
FASTENERS, Chain Door.....407-409	" " " " Index to...228-231
Fasts, Sash.....412, 413	Ivy Ornamentation.....23
Fast Joint Shutter Butts.....394	KEYS.....315-337
" " " Flaps.....395, 450	" Brass.....319-326
Finger Plates.....396-399, 451	" " Index to.....339, 340
Finishes.....32	" Duplicates for Cylinder Locks...288
Flaps, Shutter, Fast Joint.....395, 450	" Malleable Iron.....315-318
Florentine Ornamentation.....25	" " " Index to.....338
Flush Bolts.....405	" Miscellaneous.....336, 337
" " Extension.....401-404, 452	" Steel.....327-335
" " Sash Lifts.....415, 416, 453	" " Index to.....341-344
Fluted Ornamentation.....19	Key Plates, Bronze...264, 265, 267, 455
Foot Bolts.....406	" " Bronzed Iron.....264, 266, 267
French Window Catches.....423	" " Japanned.....262, 266
Front Door Locks, Mortise.....120-170, 442	" " Porcelain.....263, 267
" " " Rim.....74, 75	" " Silver Plated.....263, 266
" " " in sets.....232-259	" " Wrought Steel.....444
" " " Index to Sets.....260	Knob Latches, Mortise.....77-84
" " " "The Branford" Cyl-	" " Rim.....64-68
" " " inder.....290-292, 294	" " Sliding Door.....172
" " " "The Branford" Cyl-	Knob Locks, "The Branford" Cylinder,
" " " inder, in sets.....291	

GENERAL INDEX.—Continued.

PAGE	PAGE
Knob Locks, Master Keyed, Mortise,	Latches, Vestibule, Mortise, "The Bran-
114-119	ford" Cylinder, 291, 293, 295
" " " " Rim76	" Vestibule, Wrought Steel. . . .443
" " Mortise.91-119	Letter Drop Plates410, 411
" " " in sets208-227	Lever Bell Pulls375
" " " Index to Sets, 228-231	Lever Handles.364
" " Rim43-63	Lift Latches, with Handles. . . .196-199
" " Sliding Door.189	Lifts, Bar Sash.417, 418
" " Wrought Steel.440, 441	" Flush Sash.415, 416, 453
Knob Roses, Square345	" Hook "414, 453
Knobs, Closet.362	Locks, "The Branford" Cylinder, 288-301
" Crank.363	" " " "
" Door, Bronze.352-359, 447	Front Door290-292, 294
" " Bronzed Iron.351	" "The Branford" Cylinder, Office,
" " Jet346, 347, 349, 350	299
" " Mineral.346, 347	" " " " Store
" " Porcelain346-349	Door, with Handles.296-298
" " Screen360	" Communicating Door, Three
" " Wrought Steel.444	Bolts83, 84
" Drawer365	Dead, Horizontal Rim.38-42
" Mortise Bolt.361	" " Mortise88-90
" Picture.365	" " Rim.33-42
" Shutter.366, 367, 447	" " Sliding Door.174
" Thumb368, 369	" " Store Door, Mortise.90
" Turnbuckle364	" " " Rim33-37, 42
LATCHES, Elevator173	" " Upright Rim.33-37
" Knob, Horizontal Rim. . . .64-68	" Front Door, Mortise.120-170
" " Mortise77-84	" " " " in sets, 232-259
" " Rim64-68	" " " " Index to Sets, 260
" " Sliding Door.172	" " " Rim.74, 75
" " Upright Rim.64	" " " Wrought Steel.442
" Lift, with Handles. . . .196-199	" Hotel, Mortise.114-119
" Night, Horizontal Rim. . . .69-73	" " Rim76
" " " "The	" Inside Door, in sets.208-227
Branford" Cylinder,	" " " Index to Sets, 228-231
300, 301	" Knob, "The Branford" Cylinder 299
" " Mortise.86, 87	" " Horizontal Rim.55-63
" " Mortise, "The Bran-	" " Master Keyed. . . .76, 114-119
ford" Cylinder.289	" " Mortise91-119
" Refrigerator194	" " " in sets.208-227
" Sliding Door, Flush Pull. . .173	" " " Index to Sets, 228-231
" Thumb, Mortise, with Han-	" " " Wro't Steel, 440, 441
dles200-203	" " Refrigerator194
" Vestibule, Mortise.121-171	" " Rim43-63
" " " in sets, 233-259	" " Sliding Door.189
" " " Index to Sets,	" " Upright Rim.43-54
261	" " Sliding Door, Flush Pull,
	175-188

GENERAL INDEX.—Continued.

PAGE	PAGE
Locks, Store Door, with Handles..204-207	Mortise Store Door Dead Locks, Upright Rim.....33-37
" " " Dead, Horizontal Rim.....42	" Store Door Locks, with Handles.....204-207
" " " " Upright Rim, 33-37	" Store Door Locks, with Handles, "The Branford" Cylinder.....296-298
" Thumb Bolts, Mortise.....85	" Thumb Bolts.....85
Loose Joint Butts, Parliament.....393	" Thumb Latches, with Handles.....200-203
" Pin Butts.....385-392, 449	" Vestibule Latches.....121-171
MASTER KEY Work — (for Cylinder Locks).....288	" " " in sets.....233-259
Master Keyed Mortise Knob Locks, 114-119	" " " Index to Sets, 261
" " Rim " " 76	" " " "The Branford" Cylinder.....291, 293, 295
Mortise Bolt Knobs.....361	" Vestibule Latches, Wrought Steel.....443
" Dead Locks.....88-90	NIGHT Latches, Mortise.....86, 87
" Flush Pull Sliding Door Latches.....173	" " Rim.....69-73
" Flush Pull Sliding Door Locks, 175-188	" " " "The Branford" Cylinder.....300, 301
" Front Door Locks.....120-170	OFFICE Knob Locks, "The Branford" Cylinder.....299
" " " " in sets.....232-259	Offset Door Pulls.....383, 384
" " " " Index to Sets, 260	Oriental Ornamentation.....21
" " " " "The Branford" Cylinder.....290-292, 294	PARLIAMENT Butts.....393
" Front Door Locks, Wrought Steel.....442	Picture Knobs.....365
" Hotel Locks.....114-119	Plates, Combined Escutcheon, 268-287, 445, 446, 457, 458
" Knob Latches.....77-84	" " " "The Branford" Cylinder.....302-314
" " Locks.....91-119	" Cup Escutcheon, 173, 180, 185, 190-193
" " " in sets.....208-227	" Finger or Push.....396-399, 451
" " " Index to Sets, 228-231	" Key.....262-267, 444, 455
" " " Master Keyed, 114-119	" Letter Drop.....410, 411
" " " Wro't Steel...440, 441	" Push.....396-399, 451
" Night Latches.....86, 87	Pull Down Sash Hooks.....420
" " " "The Branford" Cylinder.....289	Pulleys, Axle.....437
" Office Locks, "The Branford" Cylinder.....299	Pulls, Bell.....370-374
" Refrigerator Latch.....194	" Bell, Lever.....375
" " Lock.....194	" Door.....381-384, 448
" Sliding Door Dead Locks.....174	" " Offset.....383, 384
" " " Knob Latches.....172	" Drawer.....427-433, 448
" " " " Locks.....189	Push Buttons, Electric.....376-380
" " " " Latches.....173	
" Store Door Dead Locks, Horizontal Rim.....42	

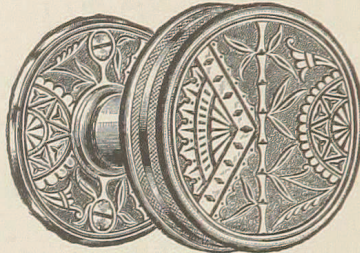
THE YALE & TOWNE MFG. CO. *Lessee of* BRANFORD LOCK WORKS.

GENERAL INDEX.—Continued.

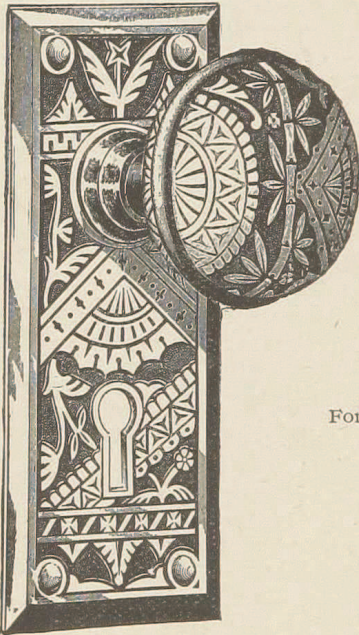
PAGE	PAGE
Push Plates.....396-399, 451	Sliding Door Dead Locks.....174
REFRIGERATOR Hinges.....195	" " Knob Latches.....172
" Latches.....194	" " " Locks.....189
" Locks.....194	" " Latches, Flush Pull.....173
Rim Dead Locks, Horizontal.....38-42	" " Locks, " " ..175-188
" " Upright.....33-37	" " Lock Stops.....180
" Front Door Locks.....74, 75	Sockets, Sash.....419
" Hotel Locks.....76	Spindles, Swivel.....345
" Knob Latches, Horizontal.....64-68	Stops, Sliding Door.....180
" " " Upright.....64	Store Door Locks, with Handles...204-207
" " Locks, Horizontal.....55-63	" " " " " " The
" " " Master Keyed.....76	Branford" Cylinder..296-298
" " " Upright.....43-54	" " Dead Locks, Horizontal
" Night Latches.....69-73	Rim.....42
" " " "The Branford")	" " Dead Locks, Mortise.....90
Cylinder.....300-301	" " " " Upright Rim,
" Store Door Dead Locks, Horizontal	33-37
zontal.....42	Swivel Spindles.....345
" Store Door Dead Locks, Upright	THUMB Bolts, Mortise.....85
.....33-37	" Knobs.....368, 369
Romanesque Ornamentation.....29	" Latches, Mortise, with Handles,
Roses, Square Knob.....345	200-203
SASH Fasteners.....412, 413	Transom Catches.....426
" Hooks.....420	Turnbuckle Knobs.....364
" Lifts, Bar.....417, 418	" Mortise Knob Latches.....81
" " Flush.....415, 416, 453	Turns, Cupboard.....424, 425, 455
" " Hook.....414, 453	UPRIGHT Rim Front Door Locks...74, 75
" Sockets.....419	" Rim Knob Latches...64
Screen Door Catches.....426	" Rim Knob Locks.....43-54
" " Knobs.....360	" Rim Store Door Dead Locks,
Sets, Front Door Locks.....232-259	33-37
" " " Index to.....260	VESTIBULE Latches, Mortise...121-171, 443
" " " "The Branford")	" " in sets.....233-259
Cylinder.....291	" " Index to Sets.....261
" Inside Door Locks.....208-227	" " "The Branford")
" " " Index to...228-231	Cylinder..291, 293, 295
" Vestibule Latches.....233-259	" " " in sets...291
" " " Index to...261	WINDOW Catches, French.....423
" " " "The Branford")	Wrought Steel, Combined Escutcheons,
Cylinder.....291	445, 446
Shelf Brackets.....438	" " Key Plates.....444
Shutter Bars.....421-450	" " Knobs.....444
" Butts.....394	" " Locks.....440-443
" Flaps.....395, 450	
" Knobs.....366, 367, 447	



ORNAMENTATION SHEET No. 2.



Knobs.
No. 2338.



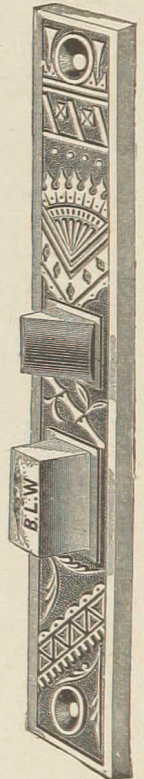
No. 7860 Plate.
No. 2346 Knob.

ORIENTAL,
ORNAMENTATION.

For Line, see facing page.



Key Plate.
No. 2744.

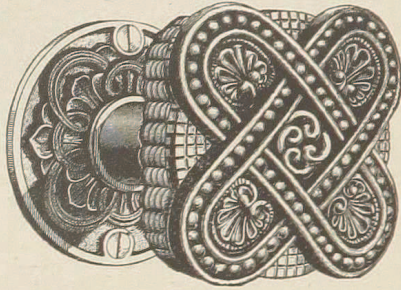


Lock Front.

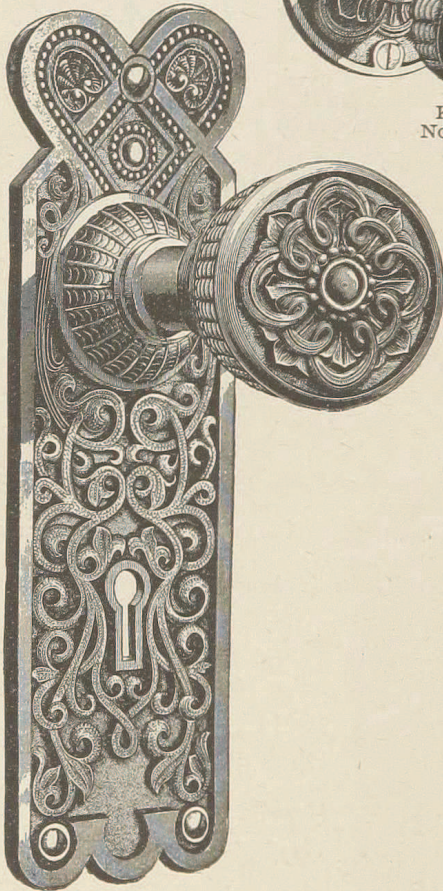
B.L.W.

ORNAMENTATION SHEET No. 6.

CUTS $\frac{1}{2}$ SIZE



Knobs.
No. Z9388.



No. Z9262 Plate.
No. Z9328 Knobs.

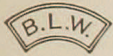
ROMANESQUE
ORNAMENTATION.

For Line, see facing page.



Key Plate.
No. Z9144.

THE YALE & TOWNE MFG. CO. Lessee of BRANFORD LOCK WORKS.



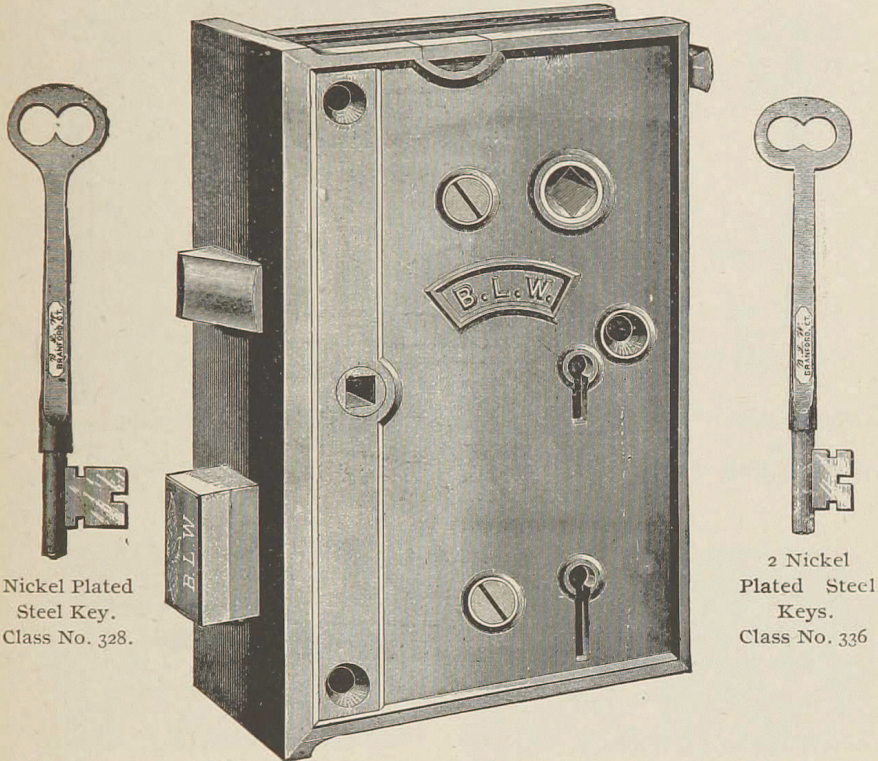
UPRIGHT



Rim Front Door Locks.

With Night Work and Stop.

$\frac{5}{16}$ inch Hub for Plain Spindle.



Nickel Plated Steel Key. Class No. 328.

2 Nickel Plated Steel Keys. Class No. 336

6 x 4 inch.

Reversible. Wrought Iron Inside Work. Japanned Case. Packed, 1 in a paper box, with screws and japanned double key-hole key plate No. 56 and thumb knob.

Numbers	Bolts	Keys	1 for	2 for	Tumblers
			Dead Bolt	Latch Bolt	
3646	Iron	Nickel Plated Steel	Class No. 328	Class No. 336	One
3647	Brass	" " "	" "	" "	Three
3648	Iron	" " "	" "	" "	One
3636	Brass	" " "	" "	" "	Three

For Knobs. See pages 346, etc.

For Key Plates. See page 266.

For Keys. See page 333.